



Wharf Place, E2

£535,000

A one bedroom warehouse conversion that overlooks Regents Canal. This property has an open plan living area, high ceilings with well proportioned rooms, and underground parking.

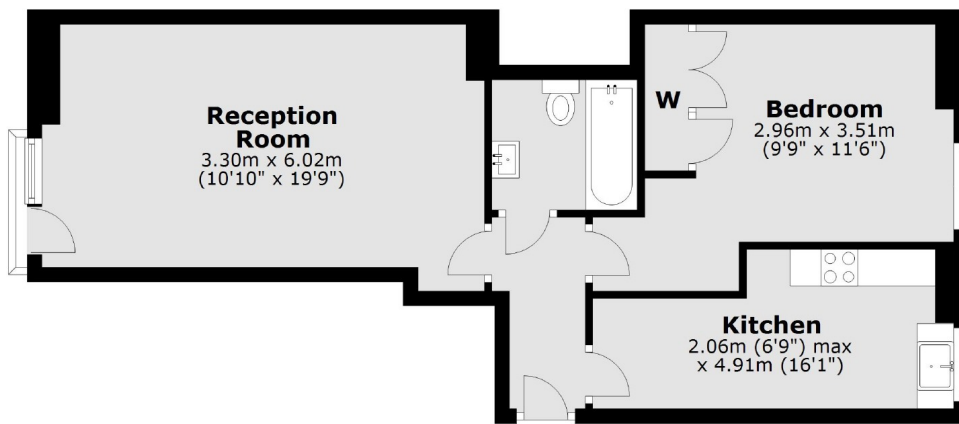
Located at the bottom of Broadway Market, right on the Canal with an abundance of local amenities and London Fields Park nearby.

Features

High Ceilings
No Onward Chain
Underground Parking
Juliet Balcony
London Fields
Broadway Market

Wharf Place, London, E2

Ground Floor



Total area: approx. 51.4 sq. metres (553.1 sq. feet)

Contact

To arrange a viewing call our office on the number below or visit our website.



Energy Rating: . We aim to make our particulars both accurate and reliable. However they are not guaranteed; nor do they form part of an offer or contract. If you require clarification on any points then please contact us, especially if you're traveling some distance to view. Please note that appliances and heating systems have not been tested and therefore no warranties can be given as to their good working order.