



[www.kings-group.net](http://www.kings-group.net)

186 Hertford Road  
Enfield Highway EN3 5AZ  
Tel: 020 8805 5959

## Scotland Green Road, Enfield, EN3 4SF



**£1,350 PCM**

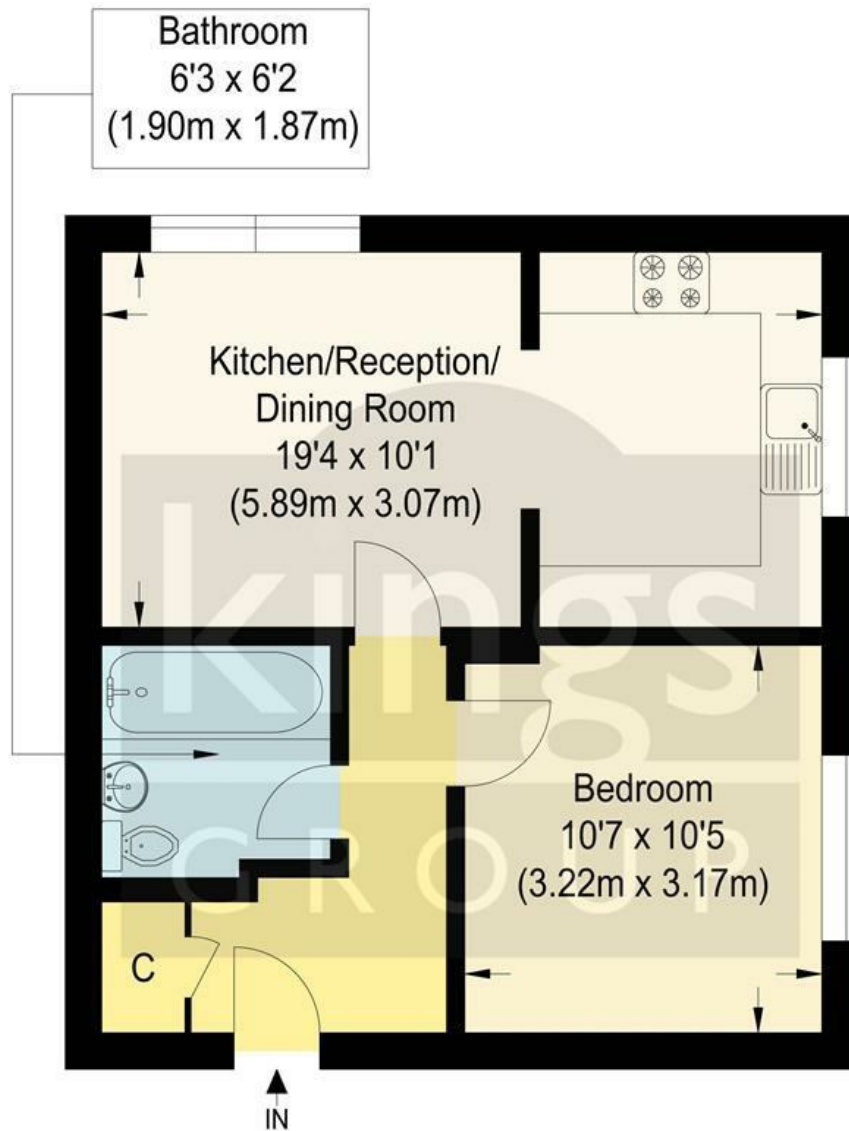
One Bedroom Ground floor Apartment situated in the Ponders End location of Enfield.  
Available 4th August.

This property offers a good size reception room, fitted kitchen, three piece bathroom suite and double bedroom. Additional benefits include communal grounds, secure entry and residents parking.

Located within close proximity to both Ponders End & Southbury Train Station which have great access into both Tottenham Hale & London Liverpool Street. You will also find local amenities within walking distance.







## Ground Floor

## Keats Close

Approximate Gross Internal Floor Area : 37.60 sq m / 404.72 sq ft  
Illustration for identification purposes only, measurements are approximate, not to scale.

Energy Efficiency Rating		Current	Potential
Very energy efficient - lower running costs			
(92 plus) A			
(81-91) B			
(69-80) C			
(55-68) D			
(39-54) E			
(21-38) F			
(1-20) G			
Not energy efficient - higher running costs			
England & Wales		57	78
		EU Directive 2002/91/EC	

Environmental Impact (CO <sub>2</sub> ) Rating		Current	Potential
Very environmentally friendly - lower CO <sub>2</sub> emissions			
(92 plus) A			
(81-91) B			
(69-80) C			
(55-68) D			
(39-54) E			
(21-38) F			
(1-20) G			
Not environmentally friendly - higher CO <sub>2</sub> emissions			
England & Wales			
		EU Directive 2002/91/EC	

