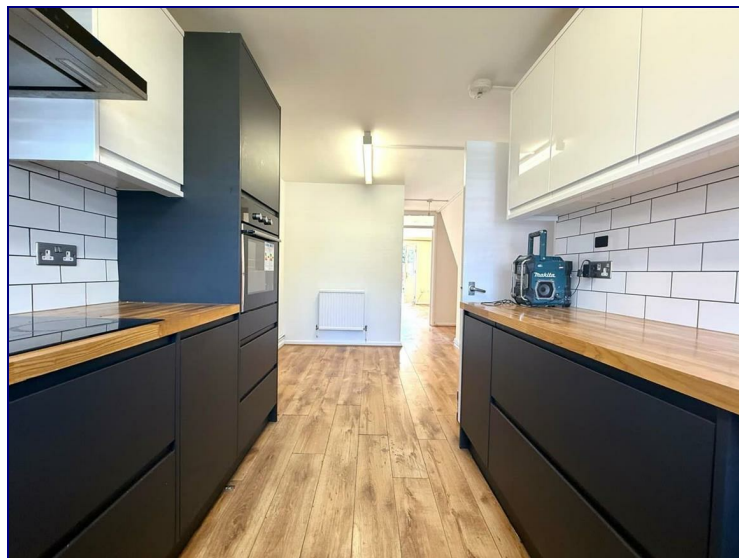
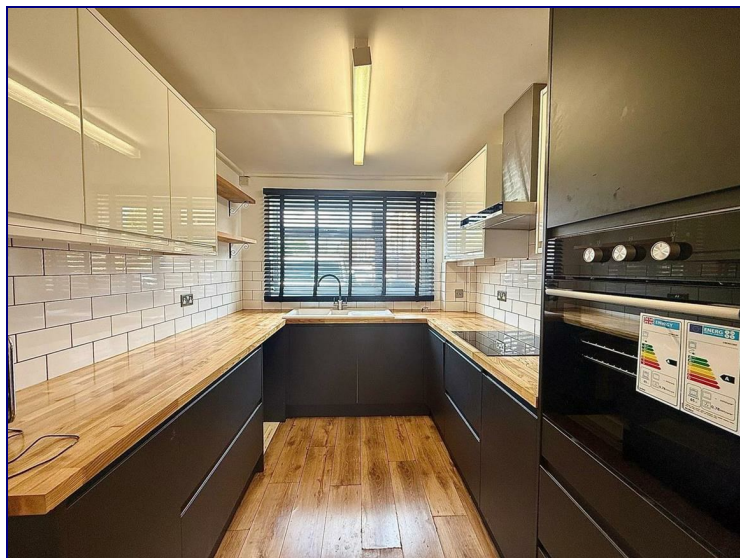


Burncroft Avenue, Enfield, EN3 7JH



£2,000

Two Bedroom Terraced House with Off Street Parking, Available Now.

Occupants will benefit from a modern fitted kitchen/diner, great size lounge leading to an easily maintainable private garden, downstairs W/C, two double bedrooms, first floor separate bathroom and W/C.

The property has been decorated throughout.

Convenience is key with this property, as it is conveniently located near Brimsdown, Ponders End, and Southbury stations, all providing easy access to London Liverpool Street within 25 minutes. Local amenities are also within walking distance.





Burncroft Avenue, EN3

Approximate Gross Internal Floor Area : 81.10 sq m / 872.95 sq ft

Illustration for identification purposes only, measurements are approximate, not to scale.

Energy Efficiency Rating		Current	Potential
Very energy efficient - lower running costs			
(92 plus)	A		
(81-91)	B		
(69-80)	C		
(55-68)	D		
(39-54)	E		
(21-38)	F		
(1-20)	G		
Not energy efficient - higher running costs			
England & Wales		EU Directive 2002/91/EC	

Environmental Impact (CO ₂) Rating		Current	Potential
Very environmentally friendly - lower CO ₂ emissions			
(92 plus)	A		
(81-91)	B		
(69-80)	C		
(55-68)	D		
(39-54)	E		
(21-38)	F		
(1-20)	G		
Not environmentally friendly - higher CO ₂ emissions			
England & Wales		EU Directive 2002/91/EC	