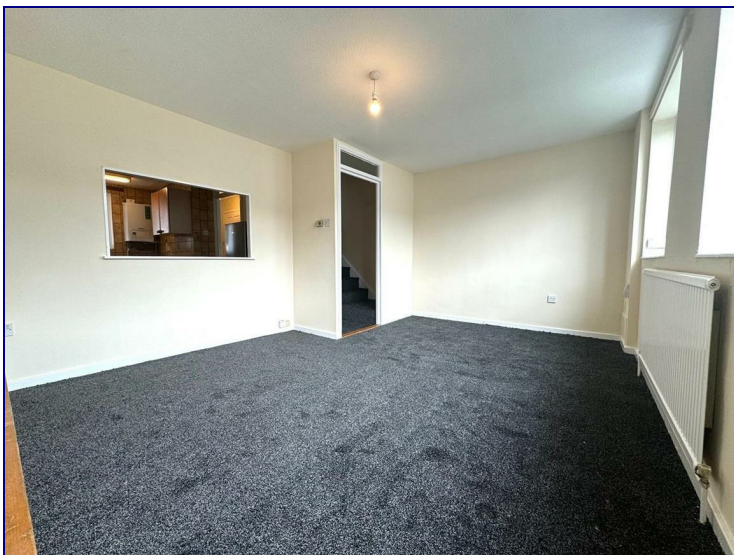




www.kings-group.net

186 Hertford Road
Enfield Highway EN3 5AZ
Tel: 020 8805 5959

Lytchet Way, Middlesex, EN3 5XR



£1,800 PCM

Three Bedroom Top Floor Split Level Maisonette, Available Now.

Occupants will benefit from a fully fitted kitchen with appliances, good size lounge, three bedrooms and separate bathroom to W/C. This property has recently had new flooring throughout, freshly painted, gas central heating and secure entry system. Parking is available on street.

This property is situated within close proximity to all local shops and amenities including Brimsdown/Turkey Street Station which has great access into both Tottenham Hale and Liverpool Street.



Energy Efficiency Rating		
	Current	Potential
<i>Very energy efficient - lower running costs</i>		
(92 plus) A		
(81-91) B		
(69-80) C		
(55-68) D		
(39-54) E		
(21-38) F		
(1-20) G		
<i>Not energy efficient - higher running costs</i>		
England & Wales	EU Directive 2002/91/EC	

Environmental Impact (CO ₂) Rating		
	Current	Potential
<i>Very environmentally friendly - lower CO2 emissions</i>		
(92 plus) A		
(81-91) B		
(69-80) C		
(55-68) D		
(39-54) E		
(21-38) F		
(1-20) G		
<i>Not environmentally friendly - higher CO2 emissions</i>		
England & Wales	EU Directive 2002/91/EC	

