



www.kings-group.net

186 Hertford Road
Enfield Highway EN3 5AZ
Tel: 020 8805 5959

Scotland Green Road, Enfield, EN3 4SF



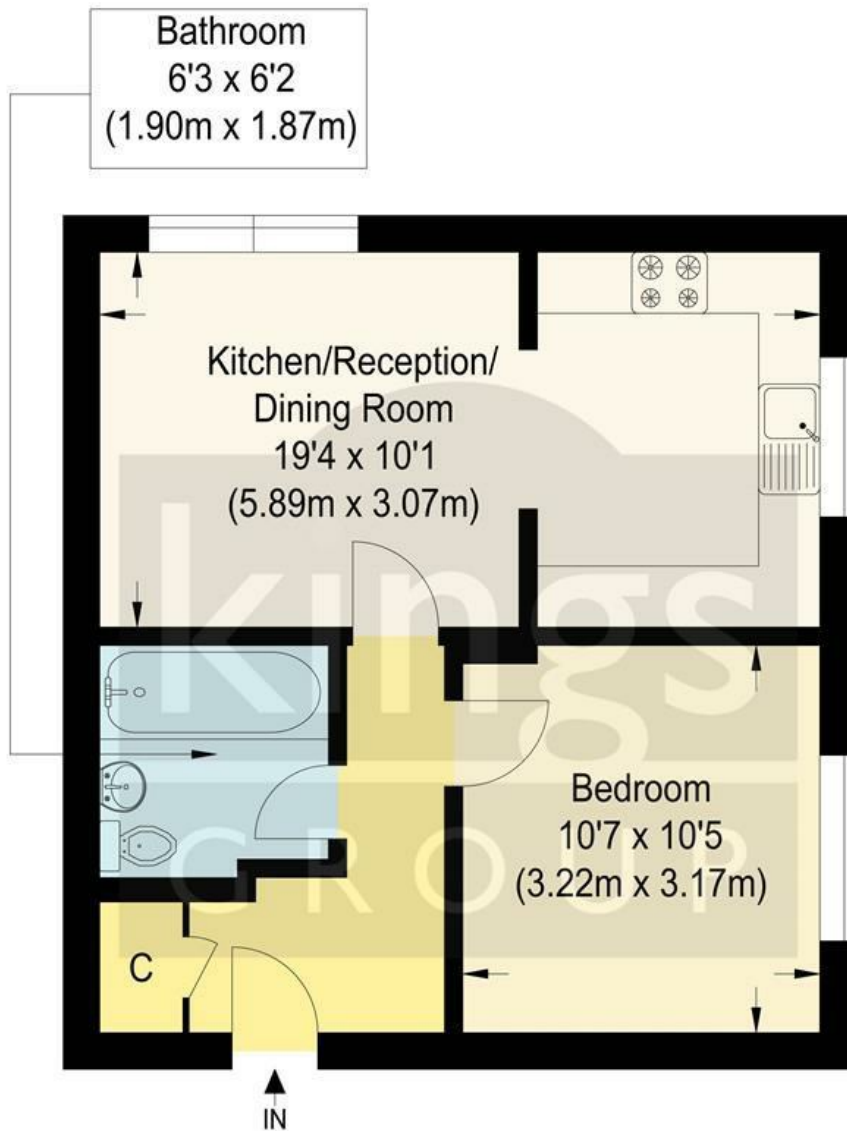
£1,350 PCM

One Bedroom Ground floor Apartment situated in the always popular Ponders End location.
Available 12th August.

Occupants will benefit from a Spacious Reception area, Three Piece Bathroom Suite , Fitted Kitchen, Communal Grounds, Gardens & Allocated Residents Parking.

Located within close proximity to both Ponders End & Southbury Train Station which have great access into both Tottenham Hale & London Liverpool Street. You will also find local amenities within walking distance.





Ground Floor



Keats Close

Approximate Gross Internal Floor Area : 37.60 sq m / 404.72 sq ft
Illustration for identification purposes only, measurements are approximate, not to scale.

Energy Efficiency Rating		Current	Potential
Very energy efficient - lower running costs			
(92 plus) A			78
(81-91) B			
(69-80) C			
(55-68) D			
(39-54) E		57	
(21-38) F			
(1-20) G			
Not energy efficient - higher running costs			
England & Wales		EU Directive 2002/91/EC	

Environmental Impact (CO ₂) Rating		Current	Potential
Very environmentally friendly - lower CO ₂ emissions			
(92 plus) A			78
(81-91) B			
(69-80) C			
(55-68) D			
(39-54) E			
(21-38) F			
(1-20) G			
Not environmentally friendly - higher CO ₂ emissions			
England & Wales		EU Directive 2002/91/EC	

