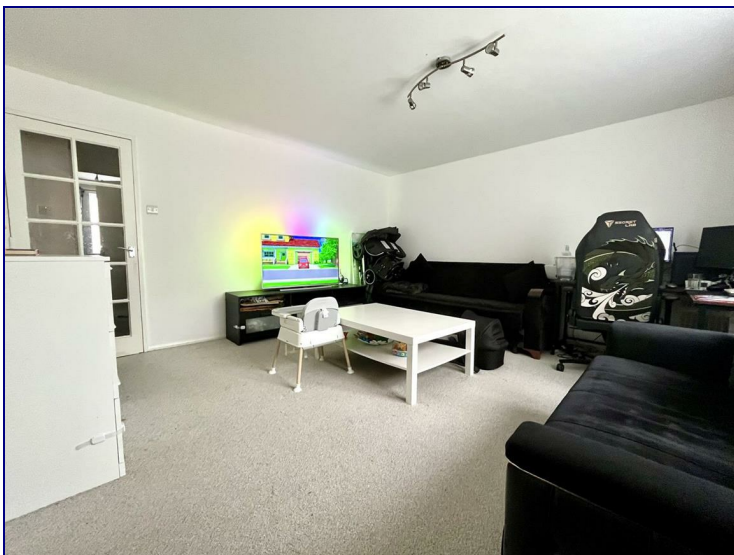


**Berdan Court, Enfield, EN3 6WB**



**£1,300 PCM**

One Bedroom Ground Floor Flat, Available 18th June.

Occupants will benefit from a separate kitchen, good size lounge, three piece bathroom suite and double bedroom. Secure entry system and parking is available.

This property is situated within the Enfield Island Village which is within close proximity to Enfield Lock Station offering great access into TOTTENHAM HALE & LONDON LIVERPOOL STREET. Also benefiting from an onsite Gym, Tesco, Nursery and other Convenient shops.



