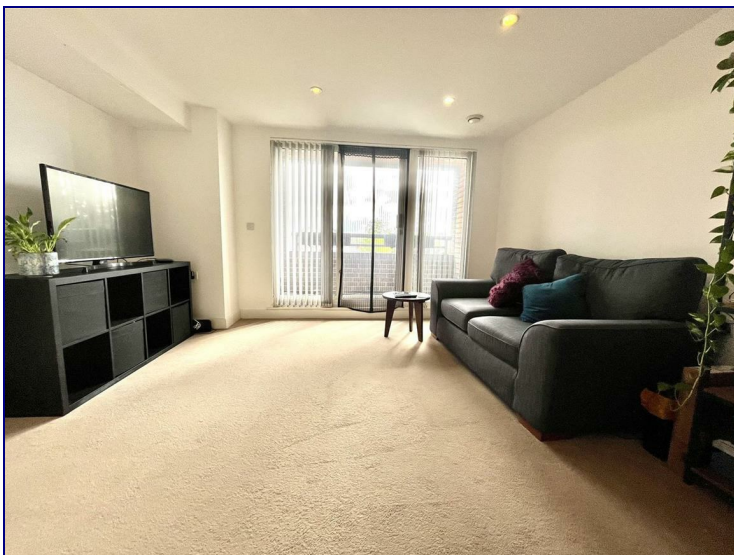


Poppy Drive, Enfield, EN3 4FF



£1,450 PCM

One Bedroom Apartment located a stones throw away from Southbury Rail Station.

Available 1st June.

Occupants will benefit from secure under ground allocated parking, lift access and a private balcony.

This property is offered furnished and includes a spacious lounge/kitchen with appliances, gas central heating, double bedroom and three piece bathroom suite.

Located in an ideal location for commuters as you will find Southbury Rail Station on your door step aswell as easy access to the A10 which is a few moments away. You will find an array of shops within Enfield Retail Park within walking distance aswell as local shops.



