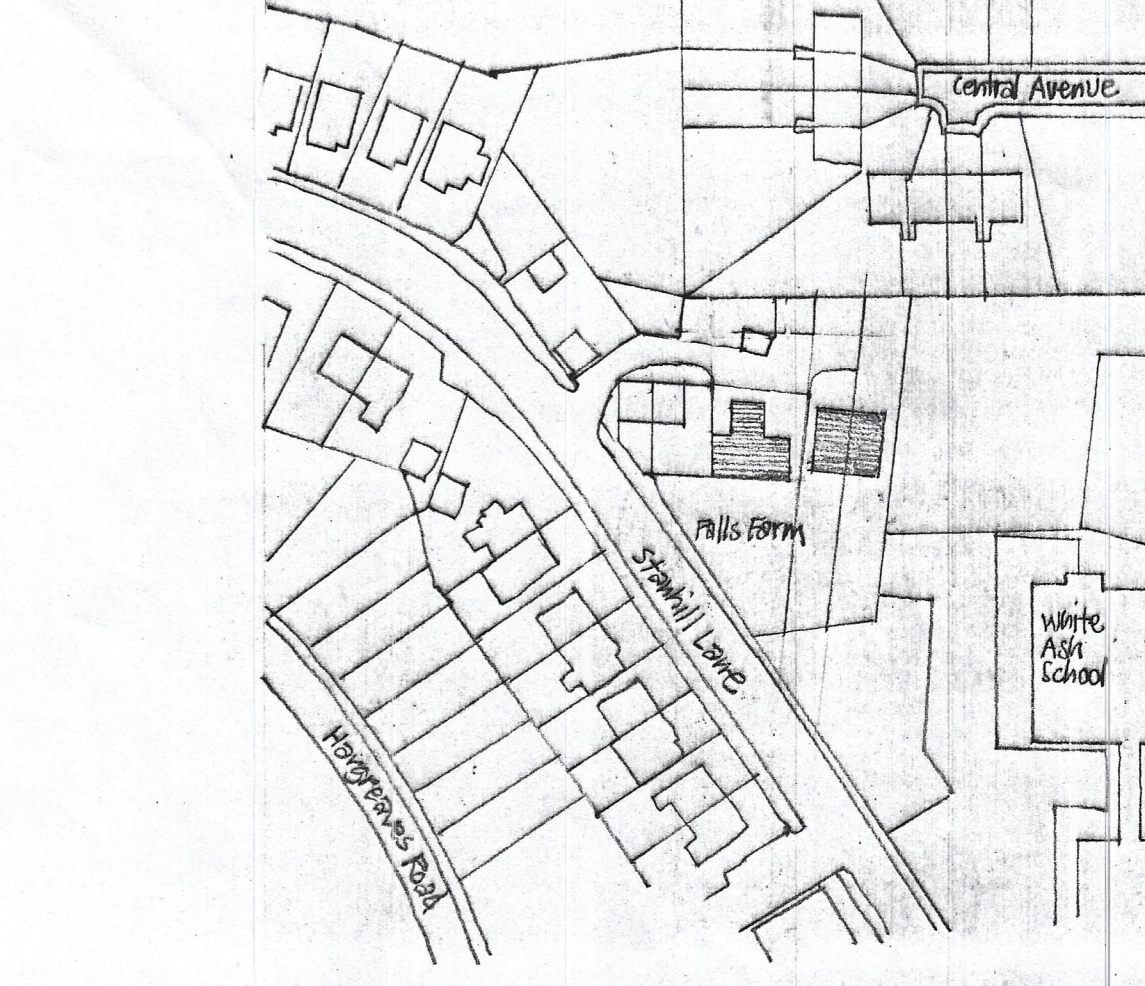
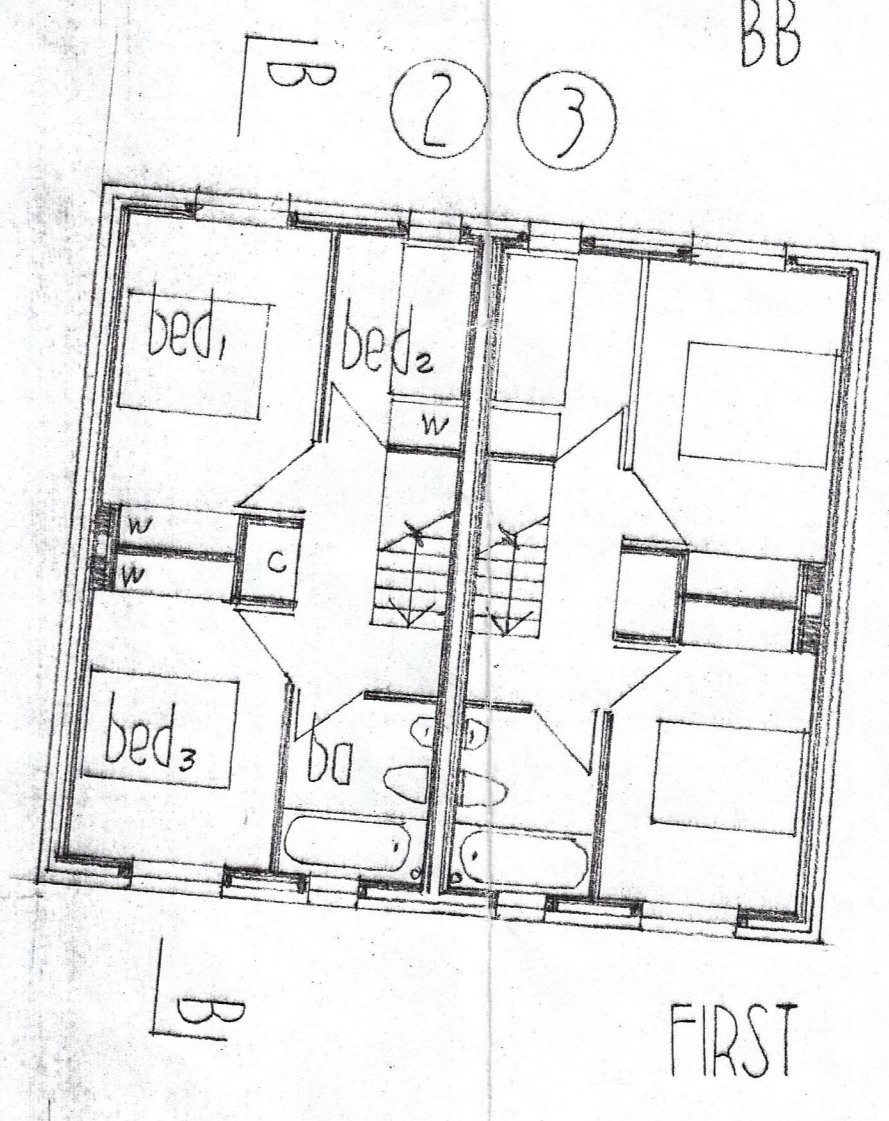
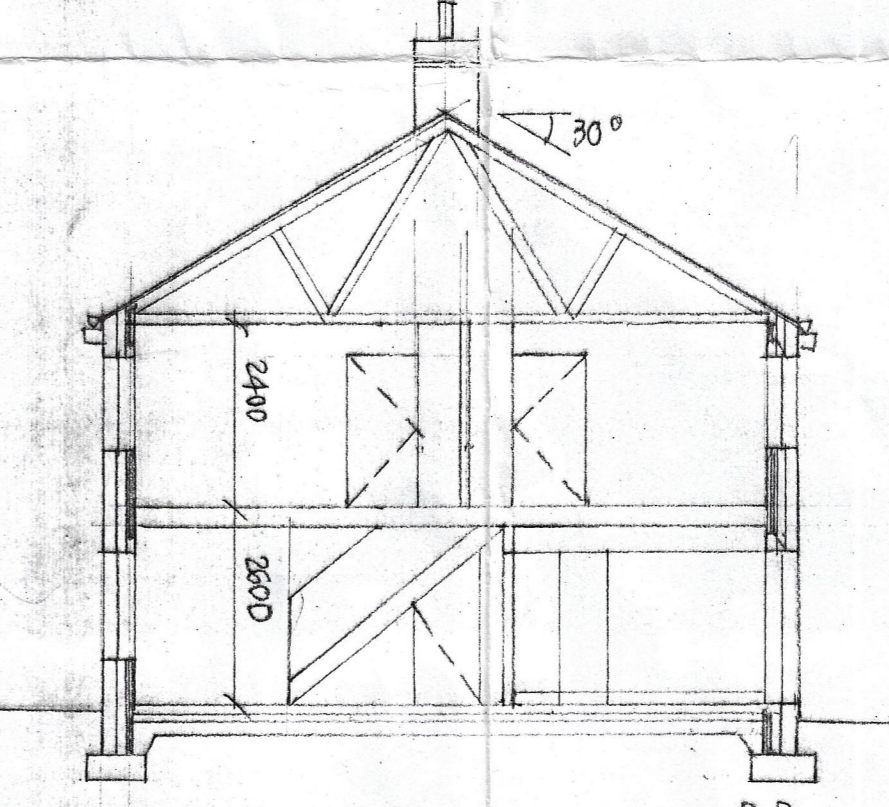
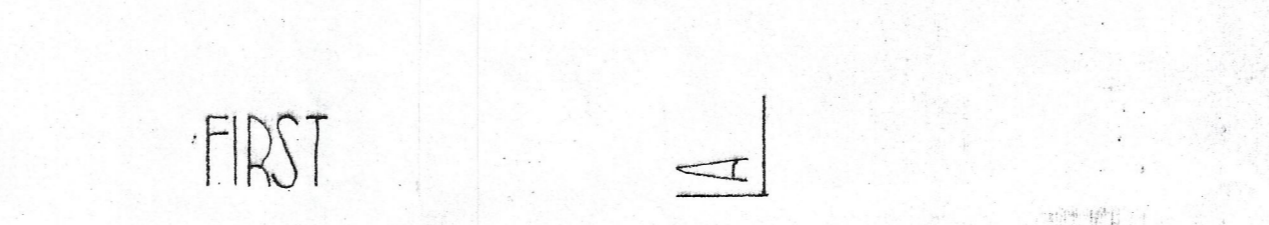
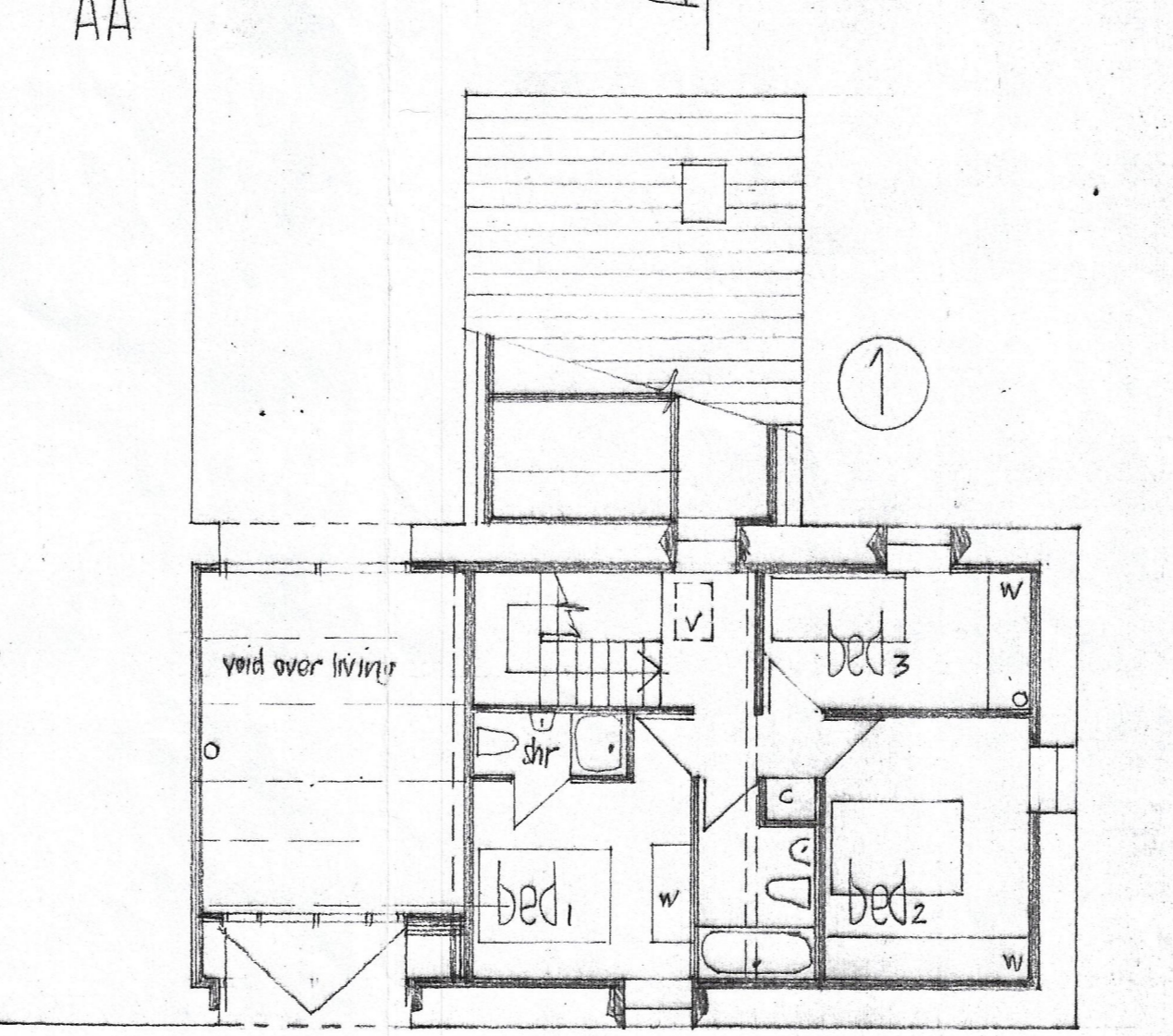
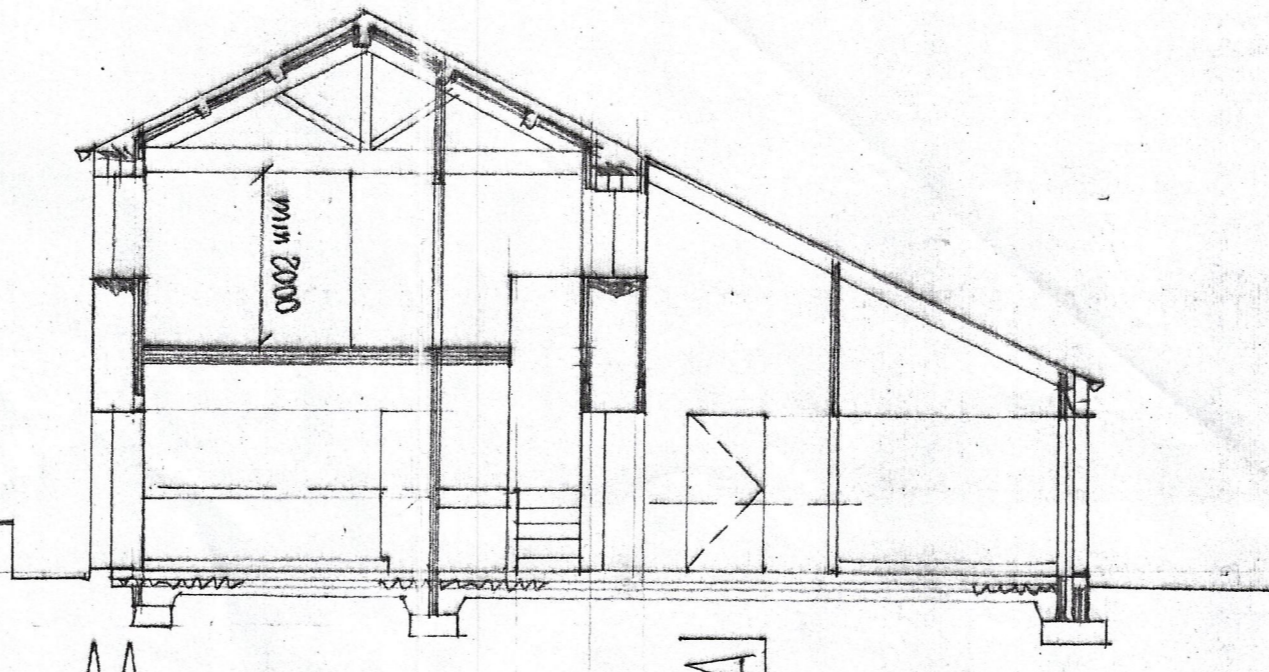
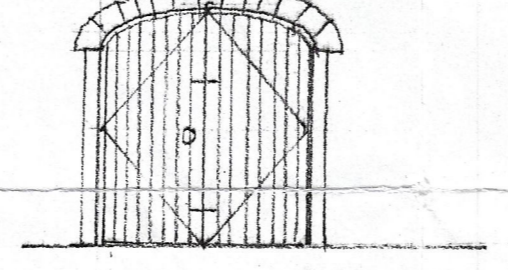
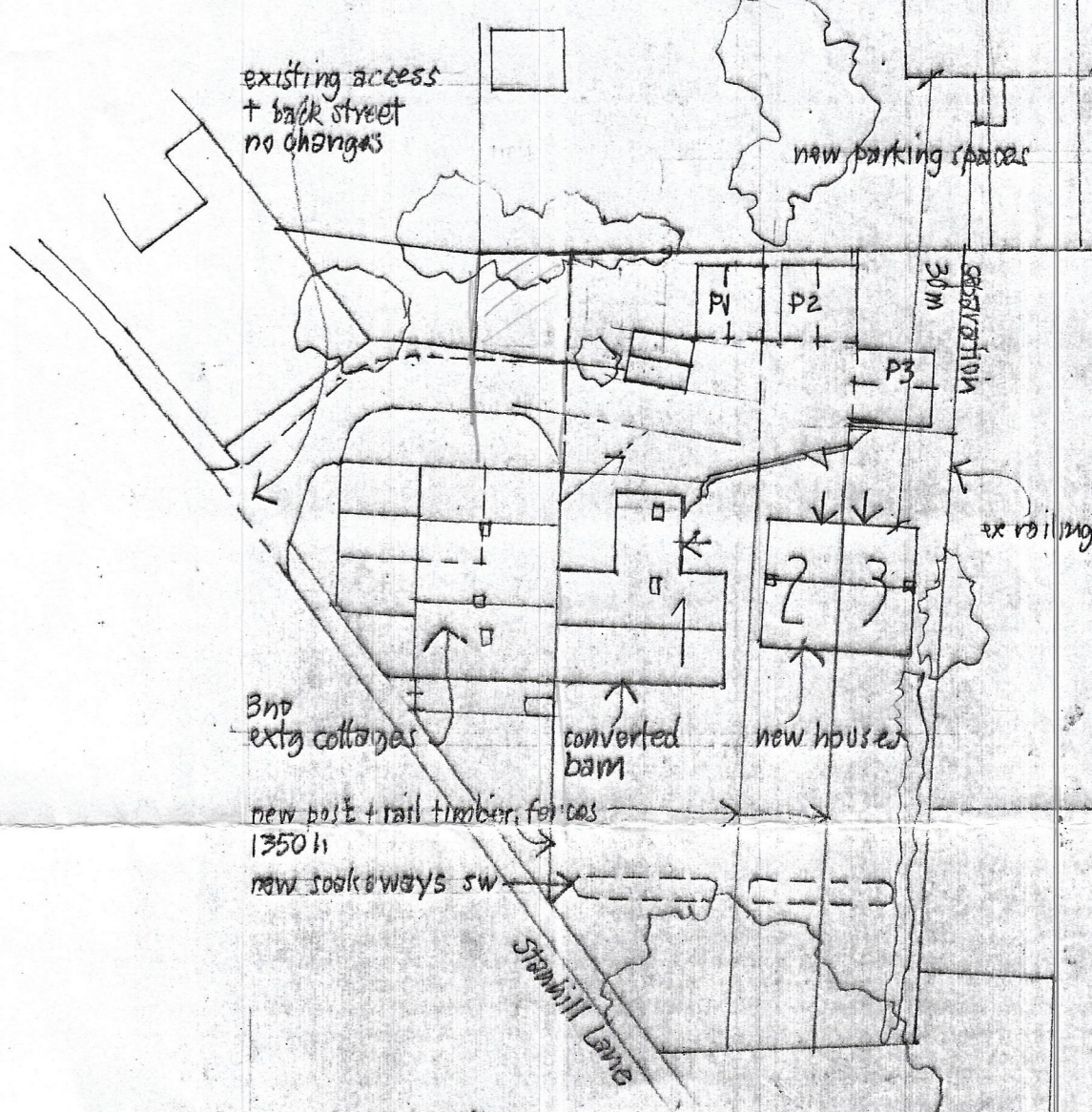


southern barn door elev 1:100
 larch board doors (weather to grey)
 top + bottom pivots, black battens

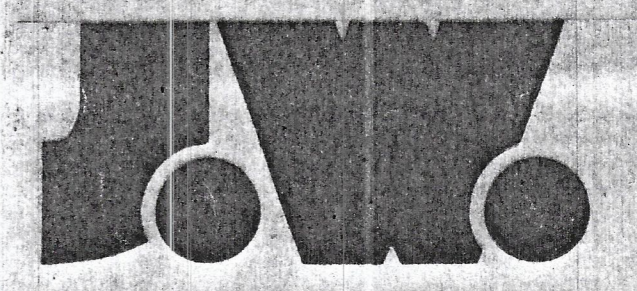


LOCATION 1:1250 DB5 4QB
 SITE/ROOF 1:500



exterior materials
 unit 1 - roof - art stone slate
 walls - existing stonework repointed, northern extension rebuilt using existing stone
 unit 1 garage - roof - art stone slate
 walls - tumbled coursed weathered art stone
 windows + doors - painted timber
 units 2 + 3 - roof - art stone slate
 walls - tumbled coursed weathered art stone, stone surrounds
 windows + doors - painted timber
 all rainwater goods - seamless black oxide aluminium, braughting

HOUSES FALLS FARM
 STANHILL LANE
 OSWALDTWISTLE
 scale 1:100 November 2017



JOHN & JENNIFER WHARTON ARCHITECT DESIGNERS
 Craven House
 Brook View
 Carlton
 SKIPTON
 North Yorkshire BD23 3EX tel 01756 792708

rev A 8-2-18 garage removed
 rev B 19-2-18 brick outbuilding retained at rear, access road line corrected
 parking for barn rectified, all parking + rear yard now gravel surfaced
 barn south screen now recessed, timber barn doors added

27432 B