



Oakham Road, Whissendine
Asking Price Of £335,000



Introducing the beautiful Mews Cottage, situated in the heart of Whissendine village close to local amenities including a public house, school and village shop. The cottage has been refurbished throughout to make an impressive turn-key home, including windows, doors, flooring, kitchen, and bathrooms. The entrance hall has doors leading to the lounge, kitchen and cloakroom. The open plan L-shaped kitchen/dining room with porcelain flooring, has a light and airy feel, with an array of integrated appliances including oven, microwave, fridge and freezer, washing machine and dishwasher. This makes for a fantastic entertaining space. The lounge has been given the 'wow factor' with a vaulted ceiling, Velux window, feature fireplace, and double doors opening to a south-facing garden. The stairs lead up to the mezzanine area with door to the spacious bedroom and ensuite bathroom providing oversized shower, free-standing bath, wall hung basin unit and WC. Outside is a block paved parking area and an easily maintained patio garden with artificial grass enclosed by a small wall and trellis.

TENURE: Freehold

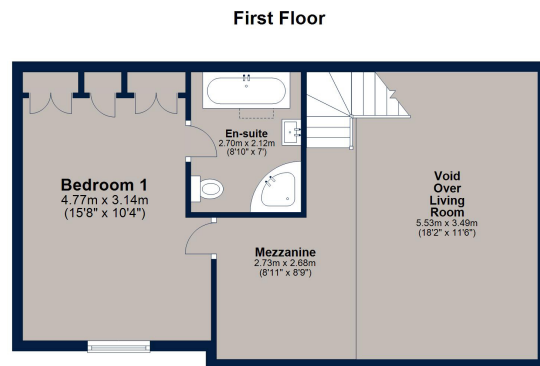
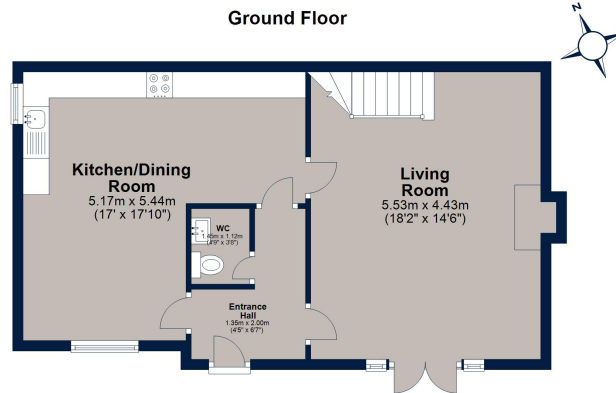
MAINS: Electric, Water and Gas

EPC: D





Oakham Road, Whissendine



Total area: approx. 89.6 sq. metres (965.0 sq. feet)

Plan is for illustration purposes only and may not be representative of the property. Plan is not to scale. Plan produced by M-Photo
Plan produced using PlanUp.

Osprey Oakham
4 Burley Road
Oakham
Rutland LE15 6DH
01572 756675
oakham@osprey-property.co.uk

Osprey Stamford
7 Red Lion Street
Stamford
Lincolnshire, PE9 1PA
01780 769269
stamford@osprey-property.co.uk

Osprey Oundle
6 Crown Court
Market Place
Oundle, PE8 4BQ
01832 272225
oundle@osprey-property.co.uk



Osprey Melton
8 Burton Road
Melton
Leicestershire, LE13 1AE
01664 778170
melton@osprey-property.co.uk

Conveniently located between Oakham and Melton Mowbray and offers a wonderful setting within the Rutland countryside.

The village offers a very well thought of C.E primary school. The lead HMI inspector stated that school is an outstanding school that is getting better and better.

There is a public house locally along with a local shop/post office and a bus service that services the village from Oakham and Melton Mowbray.

