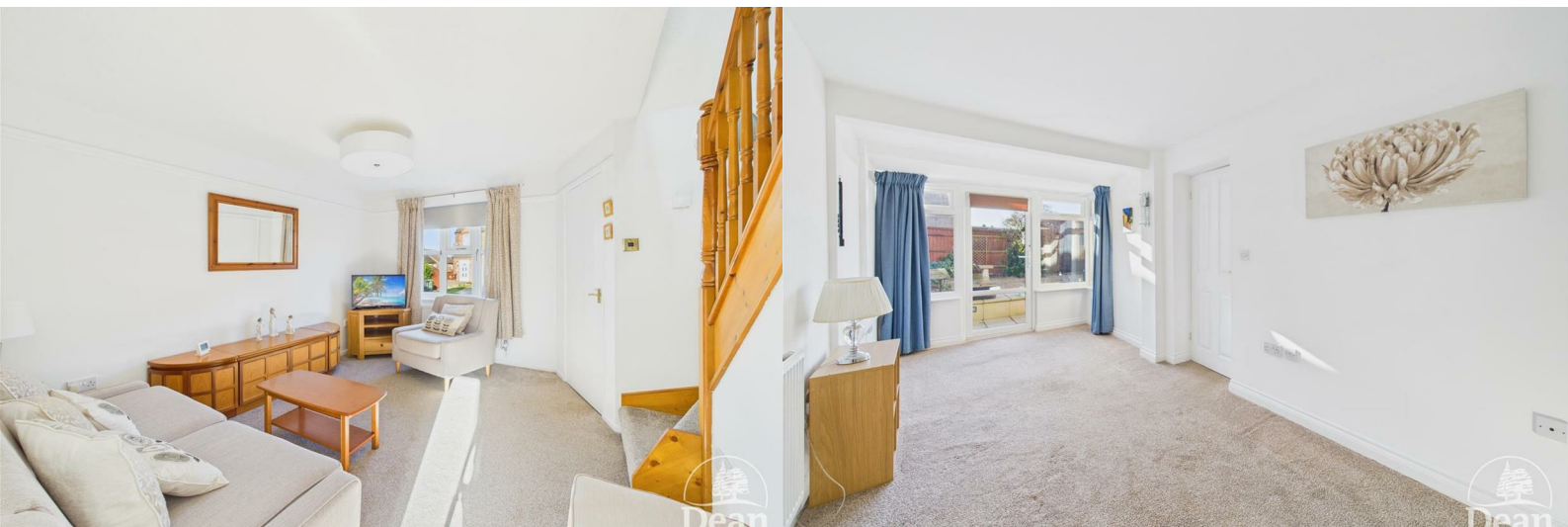




Mount Pleasant Road

Cinderford, GL14 3BX

£215,000



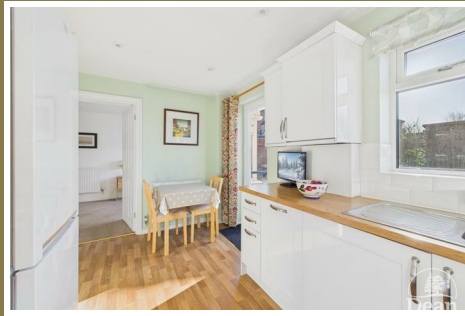
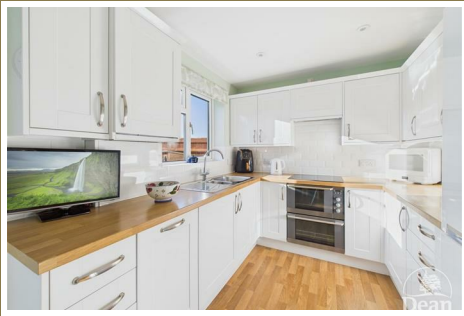
Nestled on the charming Mount Pleasant Road in Cinderford, this delightful end-terrace house offers a perfect blend of comfort and convenience. Built in 1996 the property boasts a modern design that caters to contemporary living while maintaining a warm and inviting atmosphere.

Upon entering, you are greeted by two spacious reception rooms, ideal for both relaxation and entertaining guests. These versatile spaces can be tailored to suit your lifestyle, whether you envision a cosy sitting room or a vibrant dining area. The natural light that floods through the windows enhances the welcoming ambiance throughout the home.

The property features two well-appointed bedrooms, providing ample space for rest and privacy. Each room is designed to be a tranquil retreat, perfect for unwinding after a long day. Additionally, there are two bathrooms, ensuring that morning routines and evening rituals can be carried out with ease and convenience.

For those who value parking, this home includes off road parking, a practical feature in today's busy world. The location on Mount Pleasant Road offers a peaceful residential setting while remaining close to local amenities, schools, and transport links, making it an ideal choice for families and professionals alike.

In summary, this end-terrace house in Cinderford presents an excellent opportunity for anyone seeking a comfortable and stylish home in a friendly community. With its generous living spaces, modern conveniences, and prime location, it is a property not to be missed.



Entrance Lobby :

5'0" x 3'7" (1.54 x 1.11)

UPVC door, radiator, door to Living room.

Living Room :

10'11" x 13'3" (3.34 x 4.04)

Double glazed window to front, picture rail, stairs to first floor, radiator.

Kitchen/Diner :

13'7" x 7'9" (4.16 x 2.38)

Matching wall and base storage units, one and half stainless steel sink unit, ceramic hob, electric oven and grill, integrated dishwasher, built in washing machine, space for fridge/freezer and table and chairs, vinyl flooring, double glazed window and door to rear garden, tiled splash backs, wall mounted gas combi boiler, down lighters.

(Former garage) Lounge/Bedroom :

8'1" x 17'11" (2.48 x 5.47)

Double glazed windows and door to rear garden, radiator, tv points, door to >

En-Suite :

8'0" x 4'7" (2.46 x 1.40)

Twin shower cubicle, wash hand basin, low level WC, tiled walls, radiator, double glazed window to front.

First Floor Landing :

6'5" x 2'11" (1.97 x 0.91)

Radiator, access to loft.

Bedroom 1 :

10'0" x 10'7" (3.06 x 3.25)

Double glazed window to front, radiator, built in twin wardrobes.

Bedroom 2 :

6'11" x 10'5" (2.12 x 3.19)

Double glazed window to rear, radiator.

Shower Room :

6'5" x 5'5" (1.97 x 1.67)

Shower cubicle, wash hand basin, low level WC, radiator, bathroom cabinet, double glazed window, tiled walls, fixed mirror.

Outside :

Front - Driveway providing off road parking ,

Cotswold stone garden area, mature shrub.
Rear - Full width patio adjacent to the rear of the property with ramp and hand rail, Cotswold stone area's, flower/shrub border, power points, 2 sheds.

Agents Note:

There is a pedestrian gate to an alleyway, this alleyway is owned by the person next door. Therefore there is no official side access.



Dean Estate Agents Ltd have prepared the information within this website/brochure with infinite care and without a guarantee of accuracy. Before you act upon any information provided, we request that you satisfy yourself about the completeness, accuracy, reliability, suitability, or availability with respect to the website or the information, products, services, or related graphics contained on our website for any purpose.

These details do not constitute any part of any Offer, Contract or Tenancy Agreement. Photographs used for advertising purposes may not necessarily be the most recent photographs. All photographic images are under the ownership of Dean Estate Agents Ltd and therefore Dean Estate Agents retain the copyright.

Tenanted Property – we are not always able to show the most recent condition of a property due to tenants' privacy and may choose to show the photographs of the property when it was last vacant to at least allow clients some idea of the internal condition at that time.

Energy Performance Certificates are supplied to us via a third party and we do not accept responsibility for the content within such reports.

As with leasehold property or new build development sites, you are likely to be responsible for a contribution to management charges and/or ground rent or a contribution to the development service charge. Please enquire at the time of viewing. You may also incur fees for items such as leasehold packs and, in addition, you will also need to check the remaining length of any lease before you complete a mortgage application form. You must therefore consult with your legal representatives on these matters at the earliest opportunity before making a decision to purchase or incurring costs.

Measurements: Great care is taken when measuring, but measurements should not be relied upon for ordering carpets, equipment etc.

The Laws of copyright protect this material. Dean Estate Agents is the owner of the copyright. This property sheet forms part of our database and is protected by the database right and copyright laws.

Equipment: Dean Estate Agents have not tested the equipment or any central heating system mentioned in these particulars and the purchaser is advised to satisfy themselves as to the working order and condition of any related equipment.

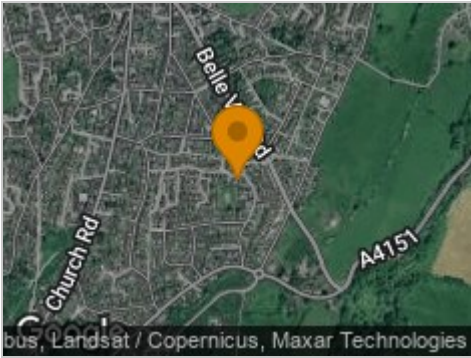
Tenure: We are advised freehold.

Agents Note: Please contact Dean Estate Agents for an updated brochure if applicable.

Road Map



Hybrid Map



Terrain Map



Floor Plan

Floor 0

Floor 1

Approximate total area⁽¹⁾
731 ft²
67.8 m²

(1) Excluding balconies and terraces

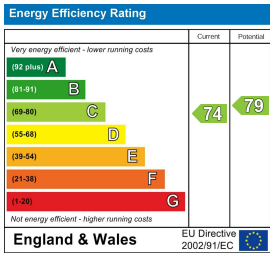
Calculations reference the RICS IPMS 3C standard. Measurements are approximate and not to scale. This floor plan is intended for illustration only.

GIRAFFE 360

Viewing

Please contact our Cinderford Office on 01594 825574 if you wish to arrange a viewing appointment for this property or require further information.

Energy Efficiency Graph



These particulars, whilst believed to be accurate are set out as a general outline only for guidance and do not constitute any part of an offer or contract. Intending purchasers should not rely on them as statements of representation of fact, but must satisfy themselves by inspection or otherwise as to their accuracy. No person in this firms employment has the authority to make or give any representation or warranty in respect of the property.

