



## Colliers Field

Cinderford, GL14 2SW

£300,000



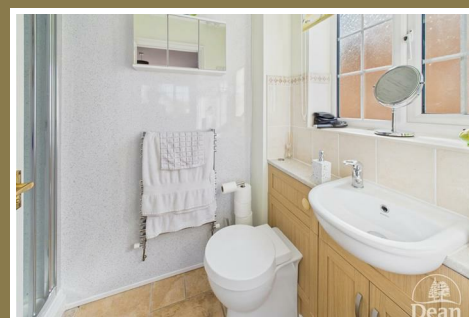


Situated in the cul-de-sac of Colliers Field, Cinderford, this immaculate detached house offers a perfect blend of comfort and convenience. Built in 2003, the property provides ample space for modern living.

Inside, you will find two well-appointed reception rooms, ideal for both relaxation and entertaining guests. The house boasts three spacious bedrooms, ensuring that there is plenty of room for family or visitors. With two bathrooms, morning routines will be a breeze, catering to the needs of a busy household.

The property is not only aesthetically pleasing but also practical, featuring parking for up to three vehicles, which is a rare find in such a desirable location. The house is situated within walking distance of the town centre, allowing for easy access to local amenities, shops, and services.

This home is perfect for those seeking a peaceful lifestyle while remaining close to the heart of Cinderford. Whether you are a growing family or looking to downsize, this property offers a wonderful opportunity to enjoy a comfortable and convenient way of life. Do not miss the chance to make this delightful house your new home.



#### Entrance Hallway :

3'9" x 9'3" (1.15 x 2.84)

Entered via composite door, radiator, wood effect laminate flooring, stairs to first floor.

#### Cloakroom :

3'0" x 5'8" (0.93 x 1.74)

Low level WC, vanity wash hand basin, radiator, laminate floor, double glazed window to front aspect.

#### Lounge :

13'6" x 15'3" (4.12 x 4.65)

Fireplace with gas fire inset, two radiators, double glazed window to front aspect.

#### Dining Room :

8'7" x 9'8" (2.64 x 2.95)

Built in understairs cupboard, radiator, oak flooring, double glazed French doors to rear.

#### Kitchen :

7'10" x 9'8" (2.39 x 2.97)

Matching wall and base cabinets, gas hob, electric oven and eye level grill, plumbing for washing machine and dishwasher, wall

mounted gas boiler, tiled splash backs, tiled floor, double glazed window to rear aspect.

#### First Floor Landing :

3'3" x 10'1" (1.01 x 3.08)

Built in cupboard, access to loft space, radiator.

#### Bedroom 1 :

9'10" x 11'8" (3.01 x 3.56)

Built in twin wardrobe, radiator, double glazed window to front aspect.

#### En- Suite :

7'3" x 4'5" (2.23 x 1.37)

Shower cubicle, low level WC, wash hand basin with fitted cupboard, towel radiator, sand stone tiled floor, double glazed window to side aspect.

#### Bedroom 2 :

10'2" x 9'0" (3.11 x 2.76)

Built in single wardrobe, double glazed window to rear aspect.

#### Bedroom 3 :

6'9" x 8'3" (2.06 x 2.52)

Radiator, double glazed window to front aspect

**Bathroom :**

6'3" x 6'9" (1.92 x 2.08)

P shaped bath with shower over, low level WC, wash hand basin, fitted cupboard, towel radiator, light / shaver point, extractor fan, sand stone tiled floor, double glazed window to rear aspect

**Outside :**

Front - Open plan with decorative slate, access to garage and off road parking for two vehicles.

Rear - Patio, lawn and decking area, flower and shrub borders, apple and pear trees, shed, greenhouse, summer house, outside water tap, side gate access.

**Garage :**

Electric roller door, power and lighting, door to rear garden.



Dean Estate Agents Ltd have prepared the information within this website/brochure with infinite care and without a guarantee of accuracy. Before you act upon any information provided, we request that you satisfy yourself about the completeness, accuracy, reliability, suitability, or availability with respect to the website or the information, products, services, or related graphics contained on our website for any purpose.

These details do not constitute any part of any Offer, Contract or Tenancy Agreement. Photographs used for advertising purposes may not necessarily be the most recent photographs. All photographic images are under the ownership of Dean Estate Agents Ltd and therefore Dean Estate Agents retain the copyright.

Tenanted Property – we are not always able to show the most recent condition of a property due to tenants' privacy and may choose to show the photographs of the property when it was last vacant to at least allow clients some idea of the internal condition at that time.

Energy Performance Certificates are supplied to us via a third party and we do not accept responsibility for the content within such reports.

As with leasehold property or new build development sites, you are likely to be responsible for a contribution to management charges and/or ground rent or a contribution to the development service charge. Please enquire at the time of viewing. You may also incur fees for items such as leasehold packs and, in addition, you will also need to check the remaining length of any lease before you complete a mortgage application form. You must therefore consult with your legal representatives on these matters at the earliest opportunity before making a decision to purchase or incurring costs.

Measurements: Great care is taken when measuring, but measurements should not be relied upon for ordering carpets, equipment etc.

The Laws of copyright protect this material. Dean Estate Agents is the owner of the copyright. This property sheet forms part of our database and is protected by the database right and copyright laws.

Equipment: Dean Estate Agents have not tested the equipment or any central heating system mentioned in these particulars and the purchaser is advised to satisfy themselves as to the working order and condition of any related equipment.

Tenure: We are advised freehold.

Agents Note: Please contact Dean Estate Agents for an updated brochure if applicable.



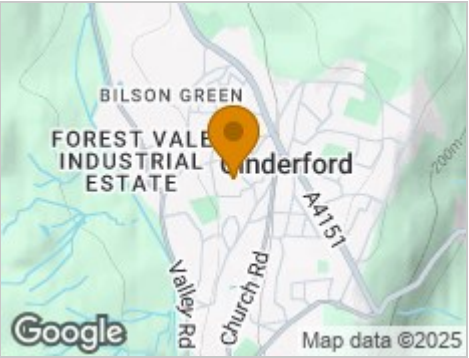
Road Map



Hybrid Map



Terrain Map



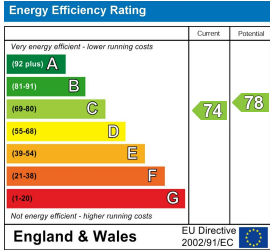
Floor Plan



Viewing

Please contact our Cinderford Office on 01594 825574 if you wish to arrange a viewing appointment for this property or require further information.

Energy Efficiency Graph



These particulars, whilst believed to be accurate are set out as a general outline only for guidance and do not constitute any part of an offer or contract. Intending purchasers should not rely on them as statements of representation of fact, but must satisfy themselves by inspection or otherwise as to their accuracy. No person in this firms employment has the authority to make or give any representation or warranty in respect of the property.

