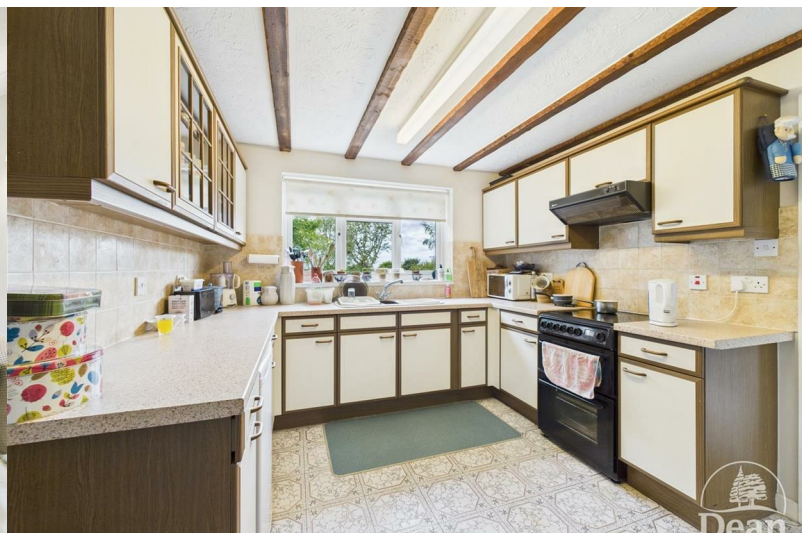




Bailey Hill

Yorkley, Lydney, GL15 4RS

£399,000



*** VIRTUAL TOUR AVAILABLE *** BACKING ONTO OPEN FIELDS***

Dean Estate Agents are thrilled to advertise 'For Sale' this well presented three bedroom detached property situated in the sought after village of Yorkley.

The property benefits from entrance hallway, downstairs cloakroom, lounge with bay window, separate dining room, fitted kitchen, utility room, three bedrooms, family bathroom, oil central heating, double glazing, garage and off road parking for several vehicles, gardens to front and rear overlooking open fields.



Entrance Hall :

3'7" x 13'5" (1.11 x 4.11)

Entered via UPVC door, glazed door to lounge and kitchen, stairs to first floor, built in under stairs cupboard, radiator.

Cloakroom :

3'0" x 5'9" (0.92 x 1.76)

Low level WC, wash hand basin, radiator, double glazed window to front aspect.

Lounge :

12'2" x 15'5" (3.73 x 4.71)

Feature brick fireplace, glazed door to dining room, radiator, wall lighting, double glazed bay window to front aspect, glazed door to dining room.

Dining Room :

9'3" x 10'4" (2.82 x 3.15)

Radiator, double glazed sliding door to rear with views over open fields.

Kitchen :

9'10" x 12'3" (3.00 x 3.74)

Fitted with a range of matching base and wall cabinets, sink unit, electric cooker point, extractor hood, recess for fridge, radiator, beamed ceiling, glazed door to utility room, double glazed window to rear aspect.

Utility Room :

9'7" x 10'4" (2.93 x 3.17)

Sink unit, plumbing for washing machine, radiator, oil boiler, double glazed window to rear aspect, double glazed door to outside, door to garage.

First Floor Landing :

4'7" x 11'2" (1.40 x 3.41)

Airing cupboard, access to loft space, double glazed window to side aspect.

Bedroom 1 :

11'2" x 12'2" (3.41 x 3.71)

Built in wardrobes, radiator, double glazed window to front aspect.

Bedroom 2 :

11'2" x 11'8" (3.42 x 3.56)

Radiator, double glazed window to rear aspect with views over open fields towards the River Severn.

Bedroom 3 :

8'1" x 9'2" (2.48 x 2.81)

Built in wardrobes, radiator, double glazed window to rear aspect with views over open fields towards the River Severn.

Family Bathroom :

8'2" x 5'10" (2.49 x 1.79)

Bath with shower over, low level WC, wash hand basin, radiator, double glazed window to front aspect.

Outside :

Front - Twin gates open onto a large driveway providing parking for several vehicles, lawn with mature tree and flower/shrub borders.

Rear - A generous lawned garden, mature trees and shrubs, patio adjacent to the property, natural stone wall on the rear boundary, open outlook over fields, pedestrian gates to either side.

Garage :

9'9" x 17'7" (2.98 x 5.38)

With an up and over door, power and lighting, courtesy door to Utility room.



Dean Estate Agents Ltd have prepared the information within this website/brochure with infinite care and without a guarantee of accuracy. Before you act upon any information provided, we request that you satisfy yourself about the completeness, accuracy, reliability, suitability, or availability with respect to the website or the information, products, services, or related graphics contained on our website for any purpose.

These details do not constitute any part of any Offer, Contract or Tenancy Agreement. Photographs used for advertising purposes may not necessarily be the most recent photographs. All photographic images are under the ownership of Dean Estate Agents Ltd and therefore Dean Estate Agents retain the copyright.

Tenanted Property – we are not always able to show the most recent condition of a property due to tenants' privacy and may choose to show the photographs of the property when it was last vacant to at least allow clients some idea of the internal condition at that time.

Energy Performance Certificates are supplied to us via a third party and we do not accept responsibility for the content within such reports.

As with leasehold property or new build development sites, you are likely to be responsible for a contribution to management charges and/or ground rent or a contribution to the development service charge. Please enquire at the time of viewing. You may also incur fees for items such as leasehold packs and, in addition, you will also need to check the remaining length of any lease before you complete a mortgage application form. You must therefore consult with your legal representatives on these matters at the earliest opportunity before making a decision to purchase or incurring costs.

Measurements: Great care is taken when measuring, but measurements should not be relied upon for ordering carpets, equipment etc.

The Laws of copyright protect this material. Dean Estate Agents is the owner of the copyright. This property sheet forms part of our database and is protected by the database right and copyright laws.

Equipment: Dean Estate Agents have not tested the equipment or any central heating system mentioned in these particulars and the purchaser is advised to satisfy themselves as to the

Road Map



Hybrid Map



Terrain Map



Floor Plan

Floor 0

Floor 1

Approximate total area⁽¹⁾
1241 ft²
115.3 m²

(1) Excluding balconies and terraces

While every attempt has been made to ensure accuracy, all measurements are approximate, not to scale. This floor plan is for illustrative purposes only.

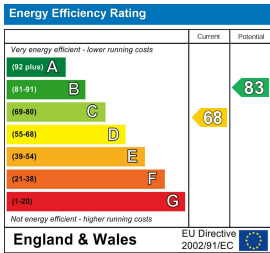
Calculations are based on RICS IPMS 3C standard.

GIRAFFE360

Viewing

Please contact our Cinderford Office on 01594 825574 if you wish to arrange a viewing appointment for this property or require further information.

Energy Efficiency Graph



These particulars, whilst believed to be accurate are set out as a general outline only for guidance and do not constitute any part of an offer or contract. Intending purchasers should not rely on them as statements of representation of fact, but must satisfy themselves by inspection or otherwise as to their accuracy. No person in this firms employment has the authority to make or give any representation or warranty in respect of the property.

