



Starling Road

Ross-On-Wye, HR9 7WP

£435,000

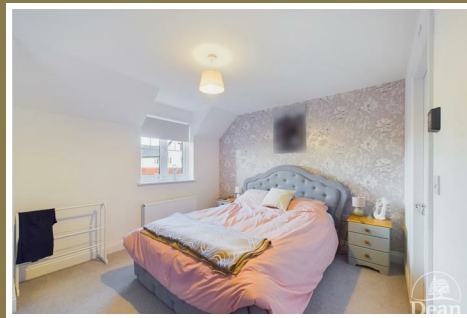


*** VIRTUAL TOUR AVAILABLE ***

Dean Estate Agents are thrilled to advertise 'For Sale' this nearly new property, situated on the popular development of "St Mary's Garden Village" on the outskirts of the popular town of Ross-on-Wye, with 9+ years remaining on the builders warranty.

The property benefits from entrance hallway, lounge, study, downstairs cloakroom, kitchen / diner with two sets of French doors opening out into the rear garden, utility room, master bedroom with a dressing area and ensuite shower room, three further bedrooms and a four piece family bathroom.

Outside is a detached garage and off road parking for two vehicles, the rear garden is fully enclosed by fencing, with lawn, patio area, hard-standing and a pedestrian access gate.



Entrance Hallway :

14'4" x 6'3" (4.37 x 1.92)

Entered via double glazed door with double glazed windows to either side, Karndean herringbone flooring, stairs to first floor, built in understairs cupboard, radiator.

Lounge :

15'10" x 11'11" (4.84 x 3.65)

Two radiators, TV and telephone point, LED lighting, double glazed window to front aspect.

Study :

9'5" x 9'0" (2.89 x 2.75)

Radiator, Karndean flooring, double glazed window to front aspect.

Cloakroom :

5'5" x 2'11" (1.67 x 0.89)

Low level WC, pedestal wash hand basin, radiator, extractor fan, Karndean flooring, consumer unit.

Kitchen / Diner :

9'3" x 28'4" (2.84 x 8.66)

Matching wall and base cabinets, 1.5 bowl stainless steel sink unit, two ovens and grills, gas hob, extractor hood, breakfast bar, LED down lighting, Karndean flooring, space for table and chairs, two sets of double glazed French doors to rear garden, double glazed window to rear aspect.

Utility Room :

5'7" x 5'9" (1.71 x 1.76)

Wall and base cabinets, sink unit, plumbing for washing machine, space for tumble dryer, wall mounted gas boiler, pressurised system, radiator, door to driveway.

First Floor Landing :

4'3" x 10'4" (1.30 x 3.15)

Built in airing cupboard, radiator, access to loft space.

Master Bedroom :

10'7" x 12'4" (3.24 x 3.78)

Double glazed window to front aspect, radiator.

Dressing Area :

8'0" x 7'8" (2.46 x 2.35)

Double glazed window to front aspect.

En-suite :

3'11" x 8'7" (1.20 x 2.62)

Twin shower cubicle, low level WC, wash hand basin, extractor fan, radiator, shaver point, Karndean flooring, double glazed window to side aspect.

Bedroom 2 :

11'10" x 8'8" (3.63 x 2.65)

Recess suitable for fitted wardrobes, double glazed window to front aspect.

Bedroom 3 :

11'3" x 8'8" (3.45 x 2.66)

Recess suitable for fitted wardrobes, radiator, double glazed window to rear aspect.

Bedroom 4 :

10'6" x 8'7" (3.21 x 2.64)

Radiator, double glazed window to rear aspect.

Family Bathroom :

6'10" x 10'4" (2.10 x 3.16)

Bath with mixer tap, low level WC, wash hand basin, double shower cubicle, extractor fan, radiator, Karndean flooring, shaver point, double glazed window to rear aspect.

Outside :

Front - Open plan with driveway providing off road parking for 2 vehicles, detached garage with pitch roof, power and lighting, and fully boarded loft space.

Rear - Fully enclosed by fenced boundaries, lawned garden with hard standing, patio area, four trees and pedestrian access gate.



Dean Estate Agents Ltd have prepared the information within this website/brochure with infinite care and without a guarantee of accuracy. Before you act upon any information provided, we request that you satisfy yourself about the completeness, accuracy, reliability, suitability, or availability with respect to the website or the information, products, services, or related graphics contained on our website for any purpose.

These details do not constitute any part of any Offer, Contract or Tenancy Agreement. Photographs used for advertising purposes may not necessarily be the most recent photographs. All photographic images are under the ownership of Dean Estate Agents Ltd and therefore Dean Estate Agents retain the copyright.

Tenanted Property – we are not always able to show the most recent condition of a property due to tenants' privacy and may choose to show the photographs of the property when it was last vacant to at least allow clients some idea of the internal condition at that time.

Energy Performance Certificates are supplied to us via a third party and we do not accept responsibility for the content within such reports. As with leasehold property or new build development sites, you are likely to be responsible for a contribution to management charges and/or ground rent or a contribution to the development service charge. Please enquire at the time of viewing. You may also incur fees for items such as leasehold packs and, in addition, you will also need to check the remaining length of any lease before you complete a mortgage application form. You must therefore consult with your legal representatives on these matters at the earliest opportunity before making a decision to purchase or incurring costs.

Measurements: Great care is taken when measuring, but measurements should not be relied upon for ordering carpets, equipment etc. The Laws of copyright protect this material. Dean Estate Agents is the owner of the copyright. This property sheet forms part of our database and is protected by the database right and copyright laws.

Equipment: Dean Estate Agents have not tested the equipment or any central heating system mentioned in these particulars and the purchaser is advised to satisfy themselves as to the

Road Map



Hybrid Map



Terrain Map



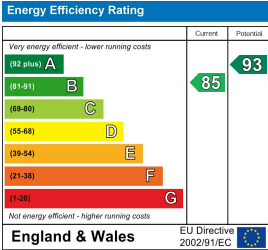
Floor Plan



Viewing

Please contact our Cinderford Office on 01594 825574 if you wish to arrange a viewing appointment for this property or require further information.

Energy Efficiency Graph



These particulars, whilst believed to be accurate are set out as a general outline only for guidance and do not constitute any part of an offer or contract. Intending purchasers should not rely on them as statements of representation of fact, but must satisfy themselves by inspection or otherwise as to their accuracy. No person in this firms employment has the authority to make or give any representation or warranty in respect of the property.