



## Sneyd Wood Road

Cinderford, GL14 3GA

£237,500



\*\*\*VIRTUAL TOUR AVAILABLE\*\*\*

Dean Estate Agency are excited to offer for sale this extremely well presented, refurbished and extended mid terrace house. The present owner has added a modern orangery, refitted the kitchen and bathrooms with high spec fittings and decor. As soon as you step through the front door you will feel surrounded by tasteful furnishings, flooring and decor. The property boasts a fitted kitchen, good size living room, 3 bedrooms, en-suite and family bathroom. To the rear is a manageable garden and the semi detached garage has parking in the front.

THIS PROPERTY MUST BE VIEWED TO APPRECIATE THE QUALITY WITHIN!



#### Entrance Hallway :

9'4" x 3'8" (2.86 x 1.14)

Luxury Vinyl tile flooring, dado rail, stairs to first floor with carpet treads, glazed door to lounge, radiator with cover.

#### Cloakroom :

6'2" x 2'11" (1.88 x 0.89)

Low level WC, wash hand basin, luxury vinyl tile flooring, extractor fan, radiator.

#### Kitchen :

11'0" x 8'1" (3.36 x 2.48)

Newly re-fitted with two tone wall and base cabinets, 1.5 bowl sink unit, gas hob, electric oven and grill, extractor hood, plumbing for washing machine, recess for fridge freezer, radiator, vinyl flooring, gas boiler, double glazed window to front aspect.

#### Lounge :

15'3" x 15'2" (4.66 x 4.64)

Luxury vinyl tile flooring, downlighting, two radiators, built in under stairs cupboard, opening to Orangery, effective decorative wood panelling to two walls.

#### Orangery :

6'11" x 10'11" (2.12 x 3.35)

Double glazed French doors to rear, double glazed windows to rear, down lighting, tiled floor.

#### First Floor Landing :

12'5" x 3'0" (3.81 x 0.92)

Luxury vinyl tile flooring, built in cupboard, access to loft space.

#### Master Bedroom :

10'8" x 8'5" (3.27 x 2.59)

Fitted wardrobes with mirrored doors, radiator, decorative wood panelling to bed wall, double glazed window to rear aspect.

#### En-suite Shower Room :

5'2" x 8'5" (1.59 x 2.59)

Newly re-fitted with shower cubicle with rain shower, vanity wash hand basin, wall hung floating WC, shelving, wall mirror, towel rail, shaver point, extractor fan, wood slat walnut effect tiled walls, vinyl flooring.

### Bedroom 2 :

10'0" x 8'6" (3.06 x 2.60)

Radiator, double glazed window to front aspect.

### Family Bathroom :

5'6" x 6'5" (1.69 x 1.96)

Newly re-fitted, bath with shower and shower screen, vanity wash hand basin, wall hung floating WC, vinyl flooring, extractor fan, part tiled wood slat walnut effect walls, towel radiator, double glazed window to front aspect.

### Bedroom 3 :

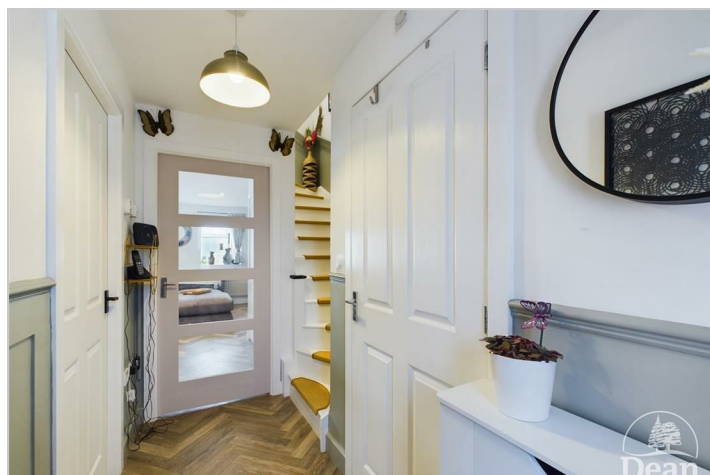
7'4" x 6'4" (2.26 x 1.95)

Currently used as a dressing room, radiator, double glazed window to rear aspect.

### Outside :

Front - steps to door.

Rear - Steps lead up to a lawned garden with Cotswold stone, brick retaining walls, fenced boundaries, semi detached single garage and off road parking



Dean Estate Agents Ltd have prepared the information within this website/brochure with infinite care and without a guarantee of accuracy. Before you act upon any information provided, we request that you satisfy yourself about the completeness, accuracy, reliability, suitability, or availability with respect to the website or the information, products, services, or related graphics contained on our website for any purpose.

These details do not constitute any part of any Offer, Contract or Tenancy Agreement. Photographs used for advertising purposes may not necessarily be the most recent photographs. All photographic images are under the ownership of Dean Estate Agents Ltd and therefore Dean Estate Agents retain the copyright.

Tenanted Property – we are not always able to show the most recent condition of a property due to tenants' privacy and may choose to show the photographs of the property when it was last vacant to at least allow clients some idea of the internal condition at that time.

Energy Performance Certificates are supplied to us via a third party and we do not accept responsibility for the content within such reports.

As with leasehold property or new build development sites, you are likely to be responsible for a contribution to management charges and/or ground rent or a contribution to the development service charge. Please enquire at the time of viewing. You may also incur fees for items such as leasehold packs and, in addition, you will also need to check the remaining length of any lease before you complete a mortgage application form. You must therefore consult with your legal representatives on these matters at the earliest opportunity before making a decision to purchase or incurring costs.

Measurements: Great care is taken when measuring, but measurements should not be relied upon for ordering carpets, equipment etc.

The Laws of copyright protect this material. Dean Estate Agents is the owner of the copyright. This property sheet forms part of our database and is protected by the database right and copyright laws.

Equipment: Dean Estate Agents have not tested the equipment or any central heating system mentioned in these particulars and the purchaser is advised to satisfy themselves as to the

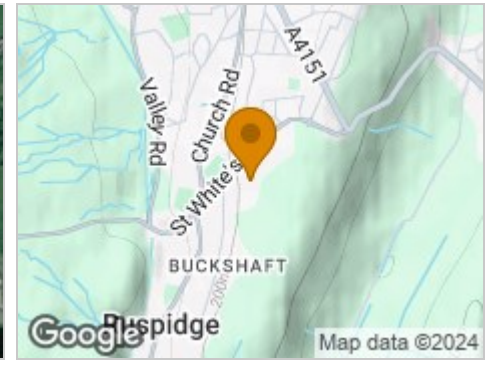
## Road Map



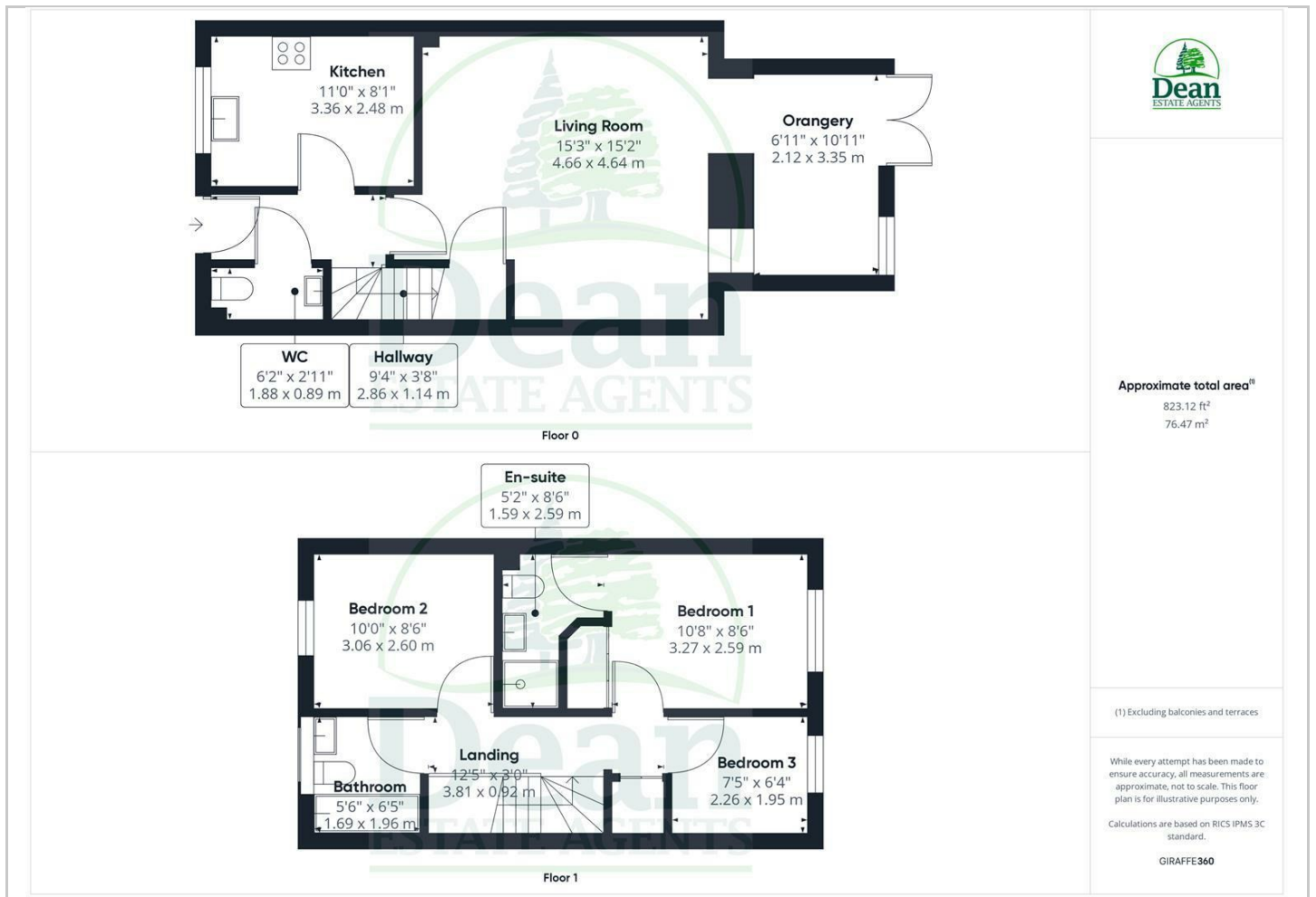
## Hybrid Map



## Terrain Map



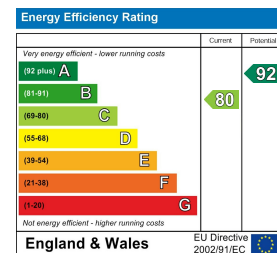
## Floor Plan



## Viewing

Please contact our Cinderford Office on 01594 825574 if you wish to arrange a viewing appointment for this property or require further information.

## Energy Efficiency Graph



These particulars, whilst believed to be accurate are set out as a general outline only for guidance and do not constitute any part of an offer or contract. Intending purchasers should not rely on them as statements of representation of fact, but must satisfy themselves by inspection or otherwise as to their accuracy. No person in this firm's employment has the authority to make or give any representation or warranty in respect of the property.