



Abbey Street

Cinderford, GL14 2NW

£280,000



*** VIRTUAL TOUR AVAILABLE ***

Dean Estate Agents are pleased to offer 'For Sale' this well presented end terrace property within easy walking distance of Cinderford town centre.

The property benefits from entrance porch, open plan lounge / diner, fitted kitchen with built in appliances, conservatory, master bedroom with en-suite shower room, two further bedrooms, family bathroom, good sized gardens to rear, gas central heating, double glazing, off road parking and integral garage.



Entrance Porch :

3'8" x 2'11" (1.12 x 0.90)

Entered via UPVC door and double glazed windows solid oak door to open plan lounge / diner.

Open Plan Lounge / Diner :

20'4" x 12'0" (6.21 x 3.66)

Stairs to first floor, laminate flooring, radiator, double glazed window to front aspect.

Kitchen :

10'8" x 9'9" (3.26 x 2.99)

Matching cream wall and base cabinets, white sink unit, ceramic hob, electric oven and grill, extractor hood, integrated dishwasher, fridge / freezer, tiled splash backs, vinyl flooring, radiator, double glazed window to rear aspect.

Conservatory :

7'2" x 10'11" (2.19 x 3.35)

Plumbing for washing machine, space for tumble dryer, laminate flooring, radiator, double glazed window and door to rear garden

First Floor Landing :

Access to loft space which is boarded (but no ladder), airing cupboard with hot water tank.

Master Bedroom :

11'4" x 9'7" (3.47 x 2.94)

Radiator, laminate floor, double glazed window to front aspect.

En-Suite Shower Room :

5'6" x 3'3" (1.69 x 1.0)

Shower cubicle, low level WC, wash hand basin, down lighting, towel radiator.

Bedroom 2 :

10'10" x 8'7" (3.31 x 2.64)

Built in over stair cupboard, laminate flooring, radiator, double glazed window to front aspect.

Bathroom :

8'3" x 9'4" (2.53 x 2.85)

White suite comprising of bath with shower attachment, twin shower cubicle, low level WC, vanity wash hand basin, towel radiator, part tiled walls, vinyl flooring, double glazed window to rear aspect

Tel: 01594 825574

Bedroom 3 :

6'5" x 12'0" (1.97 x 3.67)

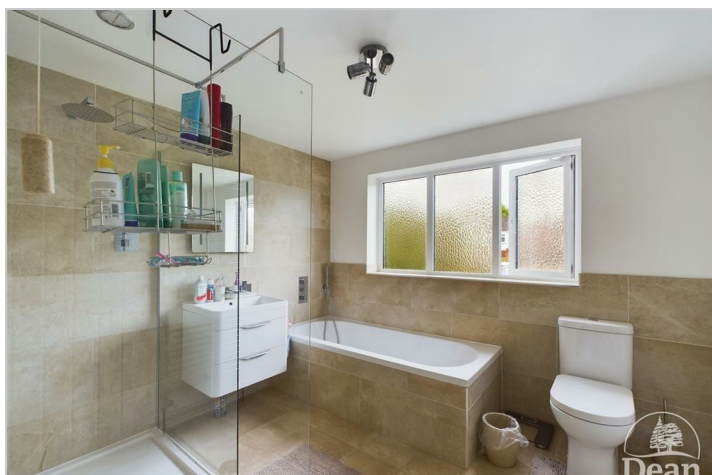
Built in wardrobe with sliding doors, laminate flooring, radiator, double glazed window to rear aspect.

Outside :

Front - Driveway to integral garage with electric roller door, power light and courtesy door to side. Two sets of pedestrian gates lead to the:

Rear - Patio adjacent to the property, good size

lawn, path and Costswold stone border to a further patio area, garden shed with power and lighting, outside water tap.



Dean Estate Agents Ltd have prepared the information within this website/brochure with infinite care and without a guarantee of accuracy. Before you act upon any information provided, we request that you satisfy yourself about the completeness, accuracy, reliability, suitability, or availability with respect to the website or the information, products, services, or related graphics contained on our website for any purpose.

These details do not constitute any part of any Offer, Contract or Tenancy Agreement. Photographs used for advertising purposes may not necessarily be the most recent photographs. All photographic images are under the ownership of Dean Estate Agents Ltd and therefore Dean Estate Agents retain the copyright.

Tenanted Property – we are not always able to show the most recent condition of a property due to tenants' privacy and may choose to show the photographs of the property when it was last vacant to at least allow clients some idea of the internal condition at that time.

Energy Performance Certificates are supplied to us via a third party and we do not accept responsibility for the content within such reports.

As with leasehold property or new build development sites, you are likely to be responsible for a contribution to management charges and/or ground rent or a contribution to the development service charge. Please enquire at the time of viewing. You may also incur fees for items such as leasehold packs and, in addition, you will also need to check the remaining length of any lease before you complete a mortgage application form. You must therefore consult with your legal representatives on these matters at the earliest opportunity before making a decision to purchase or incurring costs.

Measurements: Great care is taken when measuring, but measurements should not be relied upon for ordering carpets, equipment etc.

The Laws of copyright protect this material. Dean Estate Agents is the owner of the copyright. This property sheet forms part of our database and is protected by the database right and copyright laws.

Equipment: Dean Estate Agents have not tested the equipment or any central heating system mentioned in these particulars and the purchaser is advised to satisfy themselves as to the

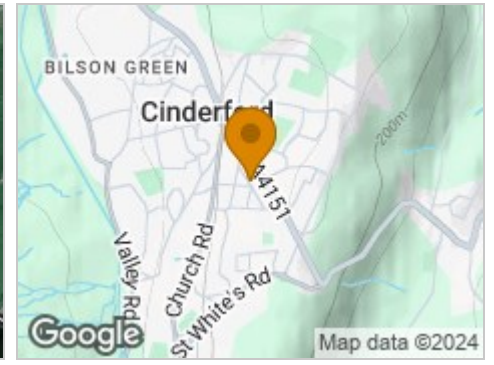
Road Map



Hybrid Map



Terrain Map



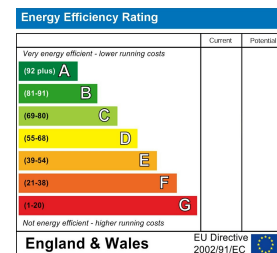
Floor Plan



Viewing

Please contact our Cinderford Office on 01594 825574 if you wish to arrange a viewing appointment for this property or require further information.

Energy Efficiency Graph



These particulars, whilst believed to be accurate are set out as a general outline only for guidance and do not constitute any part of an offer or contract. Intending purchasers should not rely on them as statements of representation of fact, but must satisfy themselves by inspection or otherwise as to their accuracy. No person in this firm's employment has the authority to make or give any representation or warranty in respect of the property.