



## Stockwell Green

Cinderford, GL14 2EH

£399,950



\*\*\* OUTLINE PLANNING FOR A DETACHED DWELLING TO THE REAR \*\*\*  
PLANNING REFERENCE NUMBER AND  
DATE OF APPLICATION  
P0449/22/PIP  
06/04/2022

Dean Estate Agents are delighted to offer 'For Sale' this spacious semi detached property, which is in need of updating, situated a short walk away from Cinderford Town Centre, with views towards woodland.

The property benefits from entrance porch, hallway, sitting room / bedroom, second sitting room, two bedrooms, shower room, kitchen / diner, cloakroom, attic room, gas central heating, off road parking for numerous vehicles, garden to front and rear



**Entrance Porch :**

2'10" x 5'10" (0.88 x 1.78)

Double glazed window to front aspect, glazed stained glass window and door to Hallway.

**Hallway :**

15'3" x 2'10" (4.66 x 0.87)

Access to loft room via wooden pull down ladder, radiator.

**Sitting Room / Bedroom :**

12'11" x 13'9" (3.94 x 4.21)

Ceramic fireplace, double glazed bay window to front aspect, window to side aspect, radiator, picture rail.

**Second Sitting Room :**

13'0" x 13'3" (3.98 x 4.06)

Fireplace with gas fire, double glazed window to front aspect with forest outlook, radiator.

**Bedroom One :**

14'1" x 10'6" (4.30 x 3.21)

Period fireplace, radiator, window to rear aspect.

**Bedroom Two :**

11'11" x 9'5" (3.64 x 2.88)

Radiator, window to rear aspect.

**Shower Room :**

4'10" x 9'8" (1.48 x 2.97)

Shower cubicle, low level WC, wash hand basin, towel radiator, airing cupboard with radiator, window to side aspect.

**Kitchen / Diner :**

17'8" x 8'3" (5.40 x 2.54)

In need of re-fitting, wall mounted gas boiler, windows to side and rear aspects.

**Rear Entrance Lobby :**

3'6" x 4'6" (1.08 x 1.38)

Door to rear garden.

**Cloakroom :**

3'9" x 4'5" (1.15 x 1.35)

Low level WC, wash hand basin, window to rear aspect.

**Attic Room :**

Window to front aspect.

**Outside :**

Front - Double wrought iron gate leading to long driveway to turning area. Steps lead up to the entrance porch, with patio either side of the path and mature shrub borders.

Rear - Laid to lawn with mature trees and shrubs, greenhouse and vegetable plot, summer house, fruit trees, outside water tap.

Parking for numerous vehicles, outline planning for a detached dwelling.



Dean Estate Agents Ltd have prepared the information within this website/brochure with infinite care and without a guarantee of accuracy. Before you act upon any information provided, we request that you satisfy yourself about the completeness, accuracy, reliability, suitability, or availability with respect to the website or the information, products, services, or related graphics contained on our website for any purpose.

These details do not constitute any part of any Offer, Contract or Tenancy Agreement. Photographs used for advertising purposes may not necessarily be the most recent photographs. All photographic images are under the ownership of Dean Estate Agents Ltd and therefore Dean Estate Agents retain the copyright.

Tenanted Property – we are not always able to show the most recent condition of a property due to tenants' privacy and may choose to show the photographs of the property when it was last vacant to at least allow clients some idea of the internal condition at that time.

Energy Performance Certificates are supplied to us via a third party and we do not accept responsibility for the content within such reports.

As with leasehold property or new build development sites, you are likely to be responsible for a contribution to management charges and/or ground rent or a contribution to the development service charge. Please enquire at the time of viewing. You may also incur fees for items such as leasehold packs and, in addition, you will also need to check the remaining length of any lease before you complete a mortgage application form. You must therefore consult with your legal representatives on these matters at the earliest opportunity before making a decision to purchase or incurring costs.

Measurements: Great care is taken when measuring, but measurements should not be relied upon for ordering carpets, equipment etc.

The Laws of copyright protect this material. Dean Estate Agents is the owner of the copyright. This property sheet forms part of our database and is protected by the database right and copyright laws.

Equipment: Dean Estate Agents have not tested the equipment or any central heating system mentioned in these particulars and the purchaser is advised to satisfy themselves as to the

## Road Map



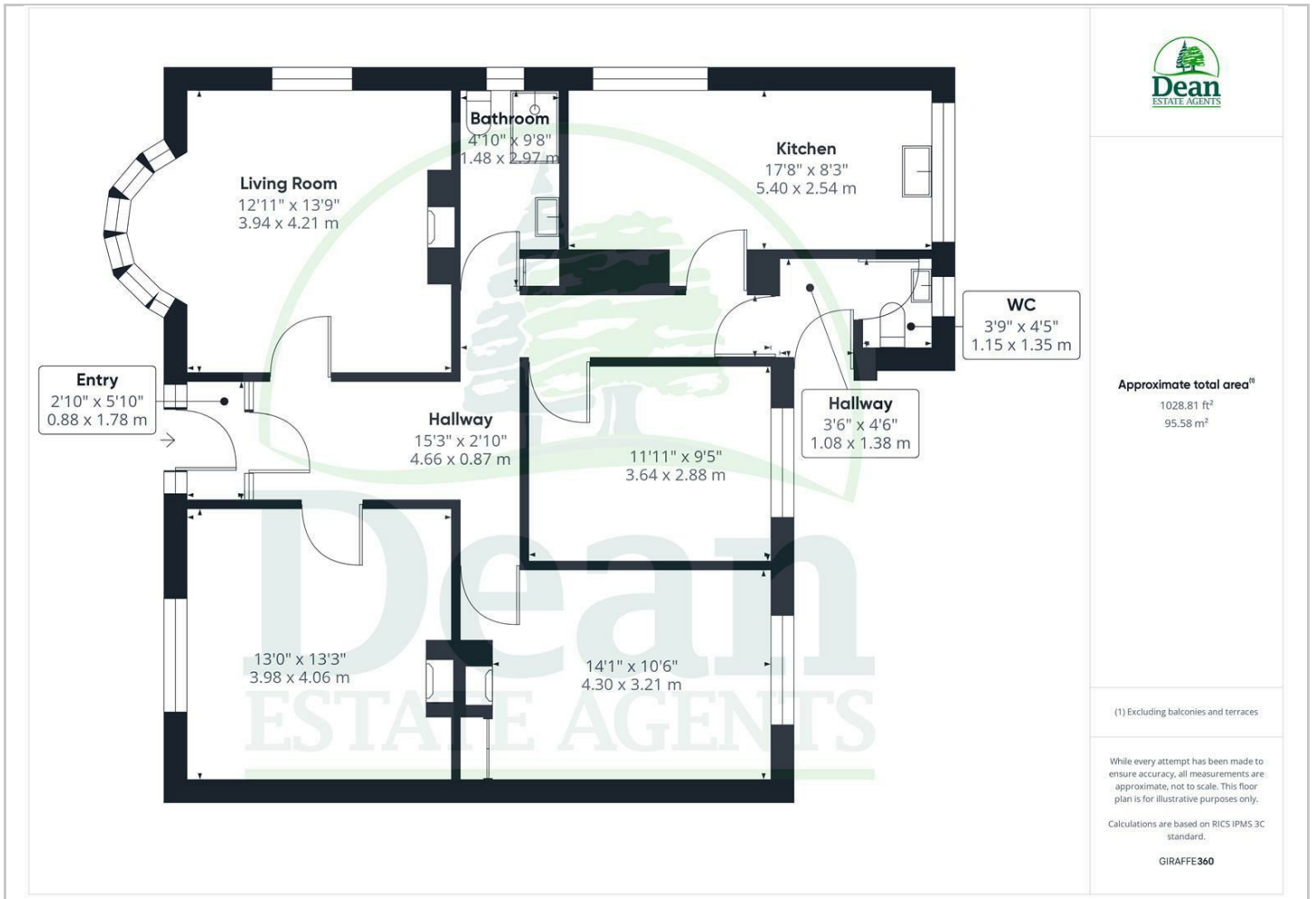
## Hybrid Map



## Terrain Map



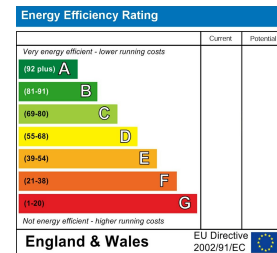
## Floor Plan



## Viewing

Please contact our Cinderford Office on 01594 825574 if you wish to arrange a viewing appointment for this property or require further information.

## Energy Efficiency Graph



These particulars, whilst believed to be accurate are set out as a general outline only for guidance and do not constitute any part of an offer or contract. Intending purchasers should not rely on them as statements of representation of fact, but must satisfy themselves by inspection or otherwise as to their accuracy. No person in this firm's employment has the authority to make or give any representation or warranty in respect of the property.