



Woodside Street

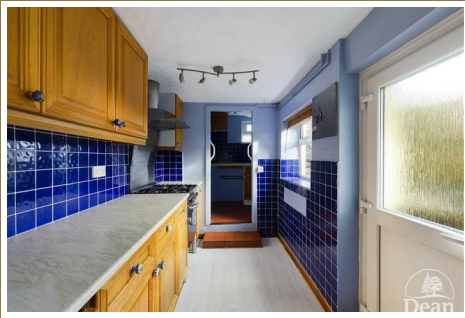
Cinderford, GL14 2NS

£200,000



*** NO ONWARD CHAIN *** *** VIRTUAL TOUR AVAILABLE ***

Dean Estate Agents are pleased to offer for sale this end of terrace house within close proximity of Cinderford town centre. The property is located at the end of the street on a corner plot with off road parking and a garage. The sitting room enjoys woodland views, there is a separate dining room, kitchen and utility, 2 bedrooms and bathroom, gas heating, double glazing and an enclosed rear garden.



Sitting Room:

11'2" x 10'9" (3.41 x 3.28)

Double glazed window to front, UPVC to front, radiator, fireplace with electric fire.

Dining Room:

13'5" x 10'9" (4.09 x 3.28)

Stairs to first floor, laminate flooring, radiator, double glazed window to rear, beamed ceiling, archway to Kitchen.

Kitchen:

9'9" x 5'10" (2.98 x 1.78)

Wall and base storage units, vinyl flooring, gas cooker with extractor hood, tiled splash backs, double glazed window to side and door to outside. Doorway to Utility.

Utility Room :

5'1" x 6'3" (1.57 x 1.92)

Sink unit, plumbing for washing machine, window/cat flap to rear, wall and base cupboards, part tiled walls.

First Floor Landing:

5'6" x 4'2" (1.68 x 1.28)

Stairs to 2nd floor.

Bedroom 1:

11'1" x 10'10" (3.40 x 3.31)

Double glazed window to front, period fireplace, radiator, pine wardrobe.

Bathroom:

10'6" x 10'9" (3.21 x 3.30)

Twin shower cubicle, low level WC, wash hand basin, radiator, built in cupboard containing the gas combi boiler, double glazed window to rear.

Bedroom 2:

12'11" x 10'11" (3.94 x 3.35)

Sky light, hanging rails, under eaves storage, radiator.

Outside:

Steps lead up to the front door, cotswold stone area with shrubs. The rear garden is enclosed and has a patio, cotswold stone, various shrubs, rear and side gate access. Driveway for parking one vehicle. (The adjoining property has right of pedestrian access)

Garage:

Attached to the property, remote control door, power and light.

Agents Note :

Please note that at the time of marketing the property is occupied by tenants but will be vacant possession upon completion of contracts



Dean Estate Agents Ltd have prepared the information within this website/brochure with infinite care and without a guarantee of accuracy. Before you act upon any information provided, we request that you satisfy yourself about the completeness, accuracy, reliability, suitability, or availability with respect to the website or the information, products, services, or related graphics contained on our website for any purpose.

These details do not constitute any part of any Offer, Contract or Tenancy Agreement. Photographs used for advertising purposes may not necessarily be the most recent photographs. All photographic images are under the ownership of Dean Estate Agents Ltd and therefore Dean Estate Agents retain the copyright.

Tenanted Property – we are not always able to show the most recent condition of a property due to tenants' privacy and may choose to show the photographs of the property when it was last vacant to at least allow clients some idea of the internal condition at that time.

Energy Performance Certificates are supplied to us via a third party and we do not accept responsibility for the content within such reports.

As with leasehold property or new build development sites, you are likely to be responsible for a contribution to management charges and/or ground rent or a contribution to the development service charge. Please enquire at the time of viewing. You may also incur fees for items such as leasehold packs and, in addition, you will also need to check the remaining length of any lease before you complete a mortgage application form. You must therefore consult with your legal representatives on these matters at the earliest opportunity before making a decision to purchase or incurring costs.

Measurements: Great care is taken when measuring, but measurements should not be relied upon for ordering carpets, equipment etc.

The Laws of copyright protect this material. Dean Estate Agents is the owner of the copyright. This property sheet forms part of our database and is protected by the database right and copyright laws.

Equipment: Dean Estate Agents have not tested the equipment or any central heating system mentioned in these particulars and the purchaser is advised to satisfy themselves as to the

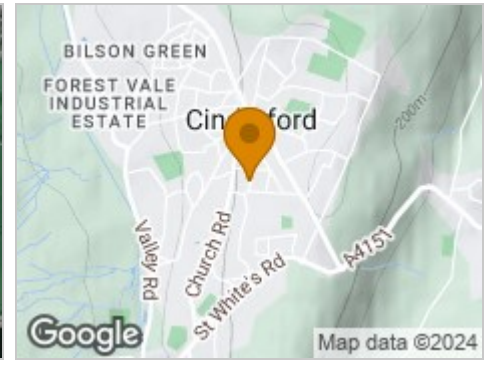
Road Map



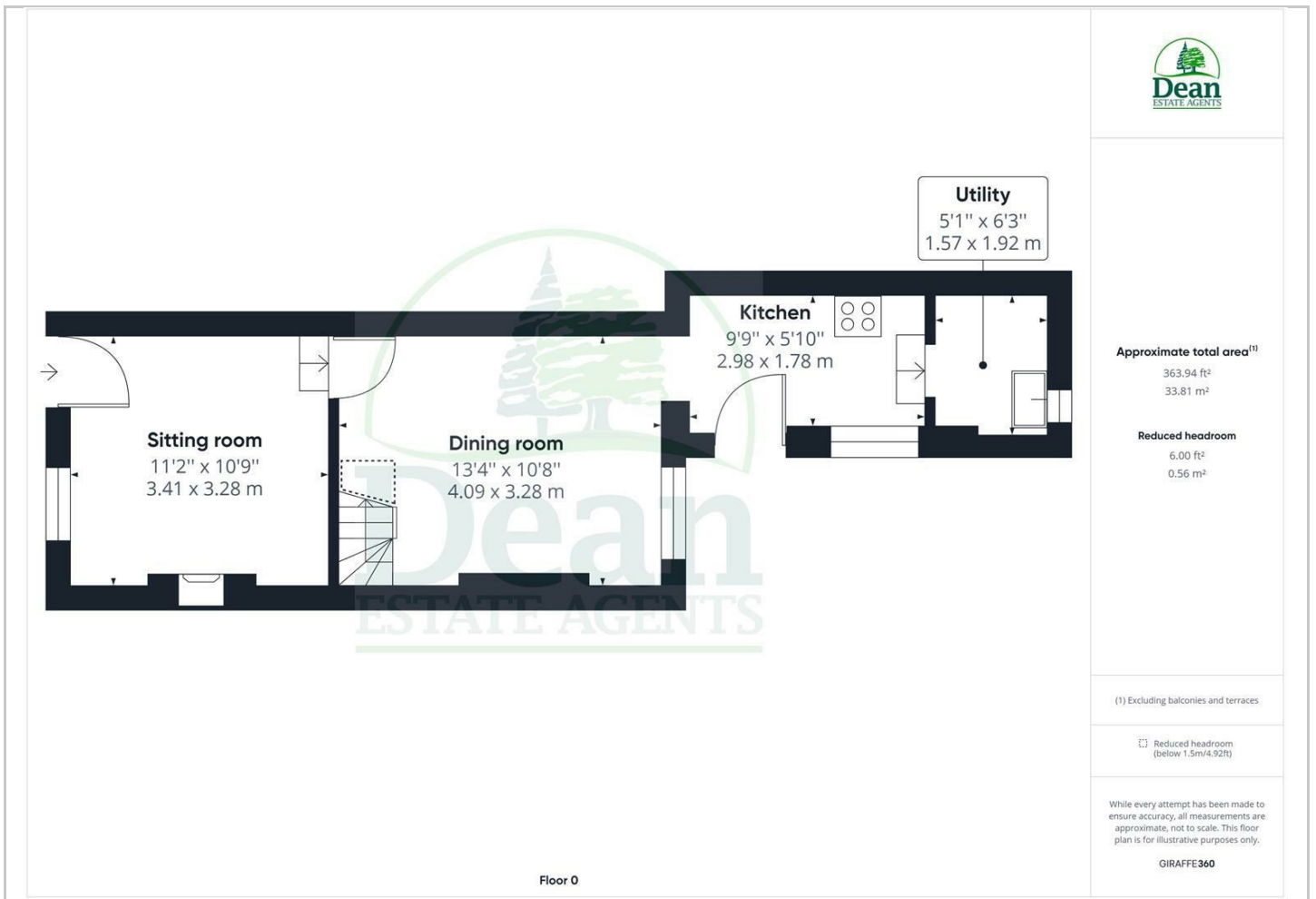
Hybrid Map



Terrain Map



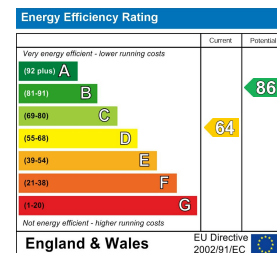
Floor Plan



Viewing

Please contact our Cinderford Office on 01594 825574 if you wish to arrange a viewing appointment for this property or require further information.

Energy Efficiency Graph



These particulars, whilst believed to be accurate are set out as a general outline only for guidance and do not constitute any part of an offer or contract. Intending purchasers should not rely on them as statements of representation of fact, but must satisfy themselves by inspection or otherwise as to their accuracy. No person in this firm's employment has the authority to make or give any representation or warranty in respect of the property.