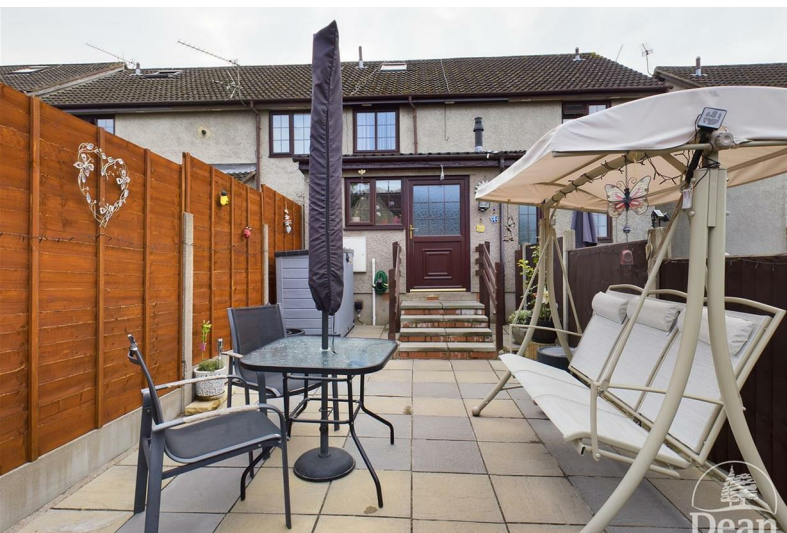




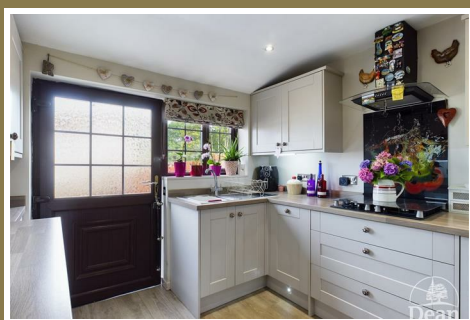
St Whites Terrace , Cinderford, GL14 3HN

£219,995



MUST BE VIEWEDDECEPTIVE***LOUNGE WITH KARNDEAN FLOORING***WET ROOM***WELL APPOINTED KITCHEN***2 BEDROOMS AND LOFT ROOM***FAMILY BATHROOM***

!Dean Estate Agents are pleased to offer for sale this extremely well presented and extended mid terrace property. The Lounge has Karndeian flooring, the former kitchen is now a wet room, a single storey extension to the rear is home to a new kitchen with quality integrated appliances. To the first floor are 2 bedrooms and white bathroom suite and a stairs leads to the loft room (used as a bedroom). The property also benefits double glazing, gas heating and a low maintenance rear garden. The current owners rent a garage situated to the rear. MUST BE SEEN!



Entrance Lobby:

2'10" x 4'3" (0.87 x 1.32)

Upvc double glazed door to front, radiator, glazed door to Lounge.

Lounge/Diner:

13'10" x 11'8" (4.24 x 3.57)

Karndeian flooring, double glazed window to front, radiator, lots of power points, glazed door to inner hallway.

Inner Hallway:

9'9" x 6'8" (2.99 x 2.05)

Stairs to first floor, under stairs cupboard with power point, radiator, tiled floor.

Wet Room:

9'8" x 4'6" (2.97 x 1.38)

Shower, water softener, wash hand basin, low level Wc, part tiled walls, extractor fan, water proof flooring.

Kitchen:

10'3" x 9'3" (3.13 x 2.82)

A quality fitted kitchen, integrated under counter fridge and separate freezer, Neff hide

and slide oven, Neff multi oven, microwave and grill, gas hob, dishwasher, extractor hood with coloured lighting, plumbing for washing machine, sink unit, under cupboard and plinth lighting, wall mounted gas boiler, towel radiator, vinyl flooring, down lighters, double glazed window and door to rear aspect.

First Floor Landing:

4'10" x 6'0" (1.49 x 1.83)

Laminate flooring.

Bedroom 1:

8'8" x 11'8" (2.65 x 3.57)

Double glazed window to front, laminate flooring, twin built in wardrobe, radiator.

Bathroom:

6'0" x 5'4" (1.85 x 1.64)

A white suite, panel bath with shower attachment, vanity wash hand basin, low level WC, tiled floor and walls, extractor fan, towel radiator.

Bedroom 2:

8'10" x 8'8" (2.71 x 2.65)

Laminate flooring, double glazed window to

rear, dado rail, radiator, glazed door to staircase leading to loft room.

Loft Room:

11'2" x 11'8" (3.41 x 3.58)

Radiator, undereaves storage, sky light window.

Outside:

Pedestrian gate and picket fence at the front of the property with path leading to front door, cotswold stone and Hydrangea.

The rear garden is laid to patio and has rear pedestrian gate access, outside power point, water tap and security light.

The current owners rent a garage situated at the rear of the property.



Dean Estate Agents Ltd have prepared the information within this website/brochure with infinite care and without a guarantee of accuracy. Before you act upon any information provided, we request that you satisfy yourself about the completeness, accuracy, reliability, suitability, or availability with respect to the website or the information, products, services, or related graphics contained on our website for any purpose.

These details do not constitute any part of any Offer, Contract or Tenancy Agreement. Photographs used for advertising purposes may not necessarily be the most recent photographs. All photographic images are under the ownership of Dean Estate Agents Ltd and therefore Dean Estate Agents retain the copyright.

Tenanted Property – we are not always able to show the most recent condition of a property due to tenants' privacy and may choose to show the photographs of the property when it was last vacant to at least allow clients some idea of the internal condition at that time.

Energy Performance Certificates are supplied to us via a third party and we do not accept responsibility for the content within such reports.

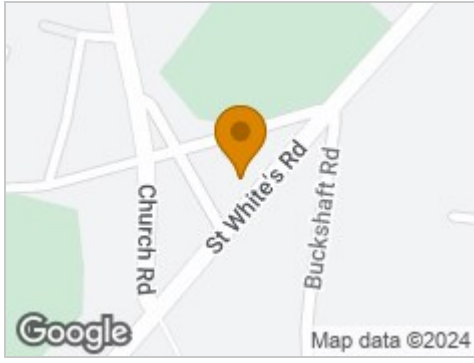
As with leasehold property or new build development sites, you are likely to be responsible for a contribution to management charges and/or ground rent or a contribution to the development service charge. Please enquire at the time of viewing. You may also incur fees for items such as leasehold packs and, in addition, you will also need to check the remaining length of any lease before you complete a mortgage application form. You must therefore consult with your legal representatives on these matters at the earliest opportunity before making a decision to purchase or incurring costs.

Measurements: Great care is taken when measuring, but measurements should not be relied upon for ordering carpets, equipment etc.

The Laws of copyright protect this material. Dean Estate Agents is the owner of the copyright. This property sheet forms part of our database and is protected by the database right and copyright laws.

Equipment: Dean Estate Agents have not tested the equipment or any central heating system mentioned in these particulars and the purchaser is advised to satisfy themselves as to the

Road Map



Hybrid Map



Terrain Map



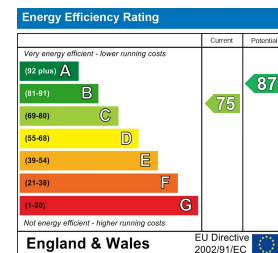
Floor Plan



Viewing

Please contact our Cinderford Office on 01594 825574 if you wish to arrange a viewing appointment for this property or require further information.

Energy Efficiency Graph



These particulars, whilst believed to be accurate are set out as a general outline only for guidance and do not constitute any part of an offer or contract. Intending purchasers should not rely on them as statements of representation of fact, but must satisfy themselves by inspection or otherwise as to their accuracy. No person in this firm's employment has the authority to make or give any representation or warranty in respect of the property.