



MARK TUNSTALL  
PROPERTY

# PRINCES GATE MEWS LONDON SW7







Beautifully presented mews house offering 2,459 sq ft (229 sq m) of 4-bedroom accommodation over three floors, with front and rear garage, air-conditioning and a south-facing roof terrace accessible from the top floor reception room.

Princes Gate Mews is quietly situated off the pedestrian-friendly Exhibition Road, close to Imperial College, the museums of South Kensington and the open space of Hyde Park. South Kensington station (Piccadilly, Circle & District underground lines) is a short stroll away, whilst the Cromwell Road provides easy access to Heathrow Airport and the west beyond.

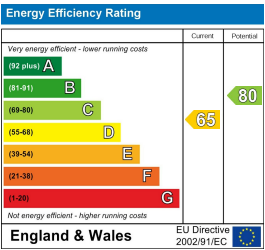
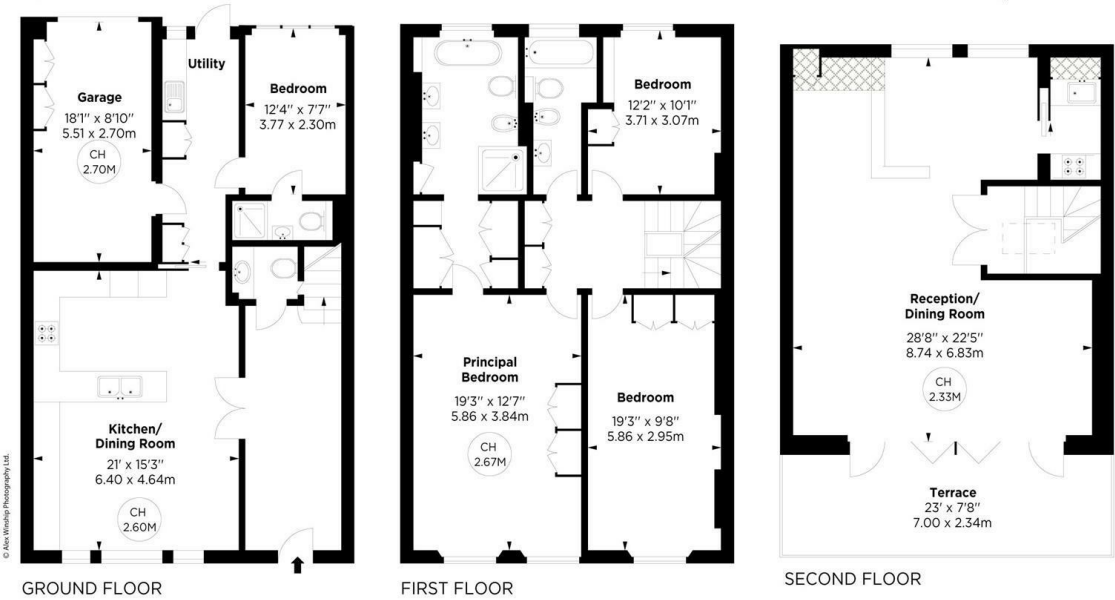
Furnished/unfurnished  
Viewing strictly by appointment with Mark Tunstall Property

### Princes Gate Mews, SW7

APPROX. GROSS INTERNAL AREA \*  
2459 Sq Ft - 228.51 Sq M  
Including 2.2 Sq M of Under 1.5m Area

Key :  
CH - Ceiling Height  
X X X - Under 1.5m

This floorplan is for GUIDANCE ONLY and NOT FOR VALUATION purposes.



INFO@TUNSTALLPROPERTY.CO.UK  
+44 (0)20 3011 1775

**IMPORTANT NOTICE**  
THIS BROCHURE AND THE DESCRIPTIONS AND MEASUREMENTS HEREIN DO NOT CONSTITUTE REPRESENTATION AND WHILST EVERY EFFORT HAS BEEN MADE TO ENSURE ACCURACY, THIS CANNOT BE GUARANTEED. A COPY OF THE FULL ENERGY PERFORMANCE CERTIFICATE IS AVAILABLE UPON REQUEST.