



PELHAM PLACE
SOUTH KENSINGTON SW7





This tremendously stylish and impeccably presented three bedroom house (2,286 sq ft / 212.38 sq m) is situated in a beautiful Grade II* listed tree-lined street and offers light-filled accommodation over four floors with gardens to front and rear affording excellent privacy. It is available for short lets of one month and more.

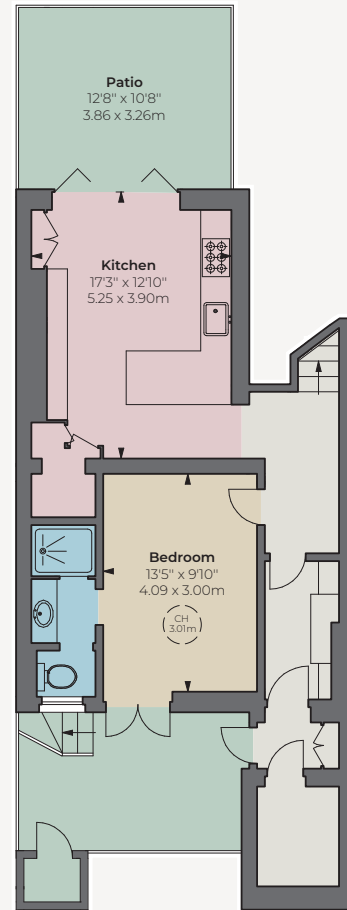
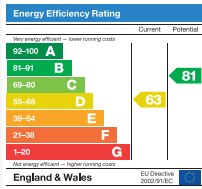




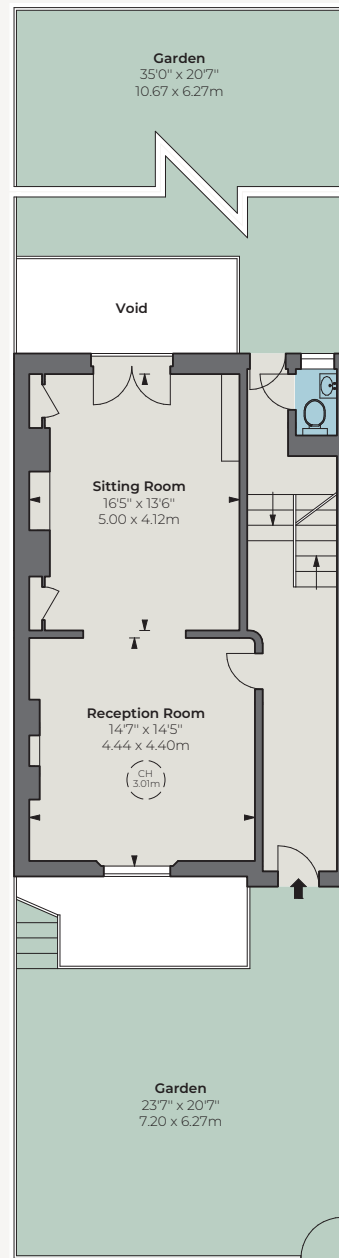
Pelham Place is arguably one of South Kensington's most desirable locations, just a stone's throw from the underground station and other transport links as well as a wide array of shopping amenities.

- 3 Bedroom suites
- Double reception room
- Kitchen
- Study
- Guest cloakroom
- Front and rear gardens





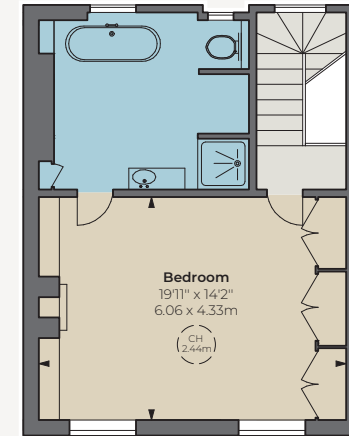
Lower Ground Floor



Ground Floor



First Floor



Second Floor



APPROXIMATE GROSS
INTERNAL AREA

2,286 sq ft
212.38 sq m

CH: Ceiling height

© Alex Winship Photography Ltd.