

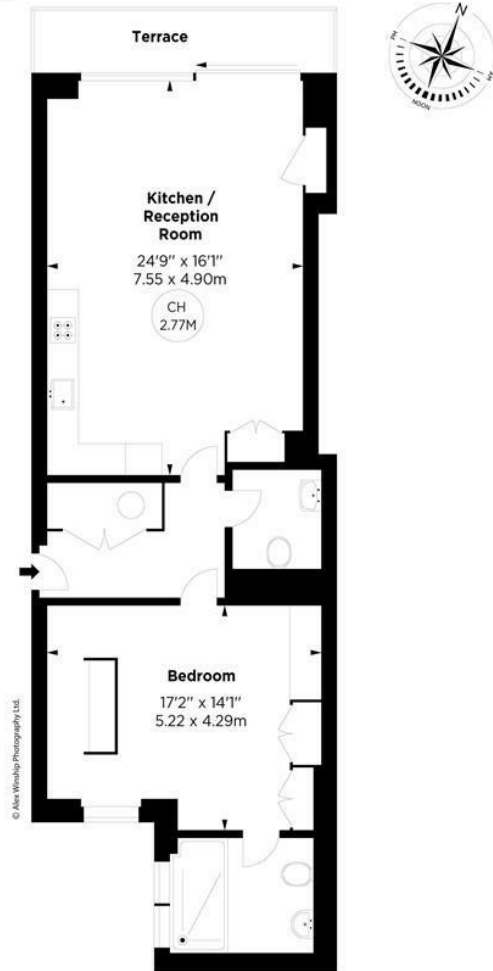
HANOVER STREET  
LONDON W1S

## Hanover Street, W1

APPROX. GROSS INTERNAL AREA \*  
843 Sq Ft - 78.31 Sq M

This floorplan is for GUIDANCE ONLY and NOT FOR VALUATION purposes.

Key :  
CH - Ceiling Height



SECOND FLOOR

ALEX  
WINSHIP  
Photography  
& Videography

\*Figures for guidance only, not to scale or valuation purposes. Areas are to be used as a guide only and are not to be used as a basis for any valuation or other purpose. All measurements are given as approximate and have been prepared in accordance with the current edition of the BS Code of Measuring Practice.



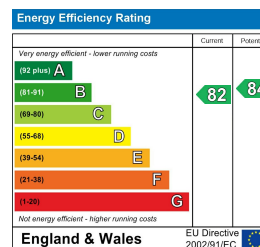
A contemporary-style one bedroom apartment (843 sq ft / 78 sq m) on the second floor of a modern block with lift, featuring an open-plan reception room, wood floors in the principal rooms, air-cooling and a balcony with views towards Hanover Square.

Hanover Street is located the heart of Mayfair, steps away from some of the capital's most exclusive dining, shopping and entertainment. Nearby Oxford Circus underground station is served by the Bakerloo, Victoria and Central lines, whilst the Elizabeth line to Heathrow Airport and the City is accessible from Hanover Square just a minute's walk away.

Deposit: equivalent to six weeks' rent (or eight weeks if permission to keep a pet in the property is granted). Minimum tenancy length: 12 months. Council Tax: Band H.

Furnished  
Viewing strictly by appointment  
with  
Mark Tunstall Property

- 1 bedroom
- Reception
- 843 sq ft / 78 sq m
- Air-cooling
- 1 bathroom
- Furnished
- Open plan kitchen
- Lift



INFO@TUNSTALLPROPERTY.CO.UK  
+44 (0)20 3011 1775

### IMPORTANT NOTICE

THIS BROCHURE AND THE DESCRIPTIONS AND MEASUREMENTS HEREIN DO NOT CONSTITUTE REPRESENTATION AND WHILST EVERY EFFORT HAS BEEN MADE TO ENSURE ACCURACY, THIS CANNOT BE GUARANTEED. A COPY OF THE FULL ENERGY PERFORMANCE CERTIFICATE IS AVAILABLE UPON REQUEST.