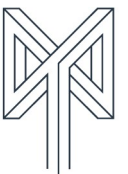




LITTLE CHESTER STREET
LONDON SW1X



MARK TUNSTALL
PROPERTY

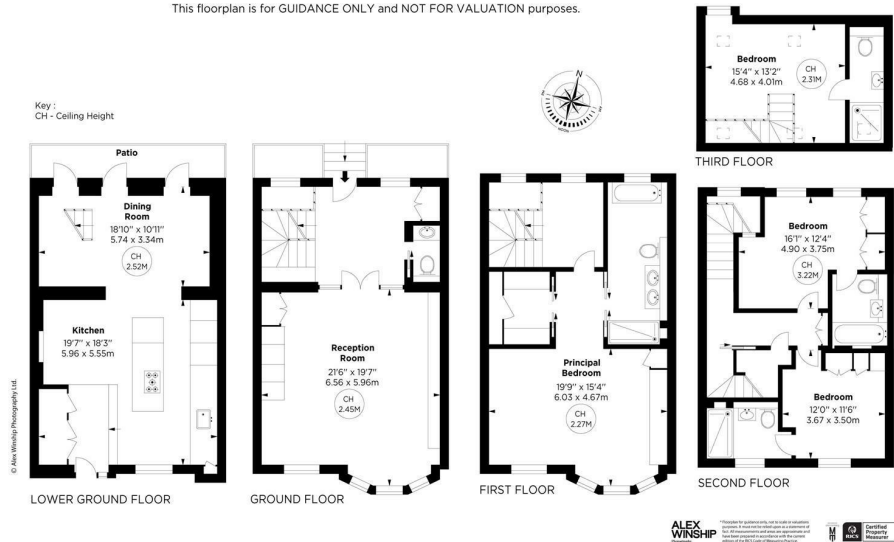
AVAILABLE FOR SHORT LET. Recently refurbished to an exceptional standard, this Belgravia townhouse offers spacious four-bedroom accommodation (2,602 sq ft / 242 sq m) with a large ground floor reception, a kitchen / dining room on the lower ground and a principal bedroom suite spanning the whole of the first floor. There are wood or stone floors throughout and the bedrooms benefit from air-conditioning.

Little Chester Street lies to the east of Belgrave Square and west of Grosvenor Place. The speciality shops and dining establishments of Elizabeth Street are a short walk away, as is the open space of Hyde Park. There are excellent public transport links at Victoria (Victoria, Circle and District Underground lines and overground lines including the Gatwick Express) which is less than 5 minutes` walk.

Little Chester Street, SW1

APPROX. GROSS INTERNAL AREA *
2664 Sq Ft - 247.53 Sq M

This floorplan is for GUIDANCE ONLY and NOT FOR VALUATION purposes.

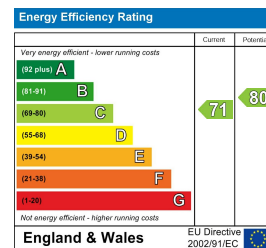


Furnished

Viewing strictly by appointment
with

Mark Tunstall Property

- 4 bedrooms
- 2 reception rooms
- Furnished
- Recently refurbished
- Air-cooling
- 4 bathrooms
- 2,664 sq ft / 247 sq m
- Kitchen
- Walk in wardrobe in principal bedroom
- Belgravia



INFO@TUNSTALLPROPERTY.CO.UK
+44 (0)20 3011 1775

IMPORTANT NOTICE

THIS BROCHURE AND THE DESCRIPTIONS AND MEASUREMENTS HEREIN DO NOT CONSTITUTE REPRESENTATION AND WHILST EVERY EFFORT HAS BEEN MADE TO ENSURE ACCURACY, THIS CANNOT BE GUARANTEED. A COPY OF THE FULL ENERGY PERFORMANCE CERTIFICATE IS AVAILABLE UPON REQUEST.