



OAKWOOD COURT
HOLLAND PARK W14



A truly exceptional five bedroom lateral flat (3,530 sq ft / 328 sq m) in Oakwood Court, a highly sought-after mansion block in Holland Park. Bathed in natural light, it has been impeccably designed and refurbished, with a stunning finish, by the world-renowned interior design team Studio Vero.

Dating back to 1899, Oakwood Court consists of nine Edwardian and three Art Deco mansion buildings positioned around a private communal garden square and is looked after by a 24-hour porter service. With a lift to all floors, the apartments are synonymous with grand lateral living in one of the Royal Borough's leafiest neighbourhoods on the western side of Holland Park.





Oakwood Court is found just to the west of Holland Park, ideally located for the renowned shops, restaurants, boutiques and convenient transport links on both Kensington High Street and Holland Park Avenue (Central and District & Circle Underground lines and many bus routes).

MINIMUM TENANCY LENGTH
12 Months
DEPOSIT
Equivalent to six weeks' rent
CONTENTS
Furnished
LOCAL AUTHORITY
The Royal Borough of Kensington & Chelsea
COUNCIL TAX
Band H



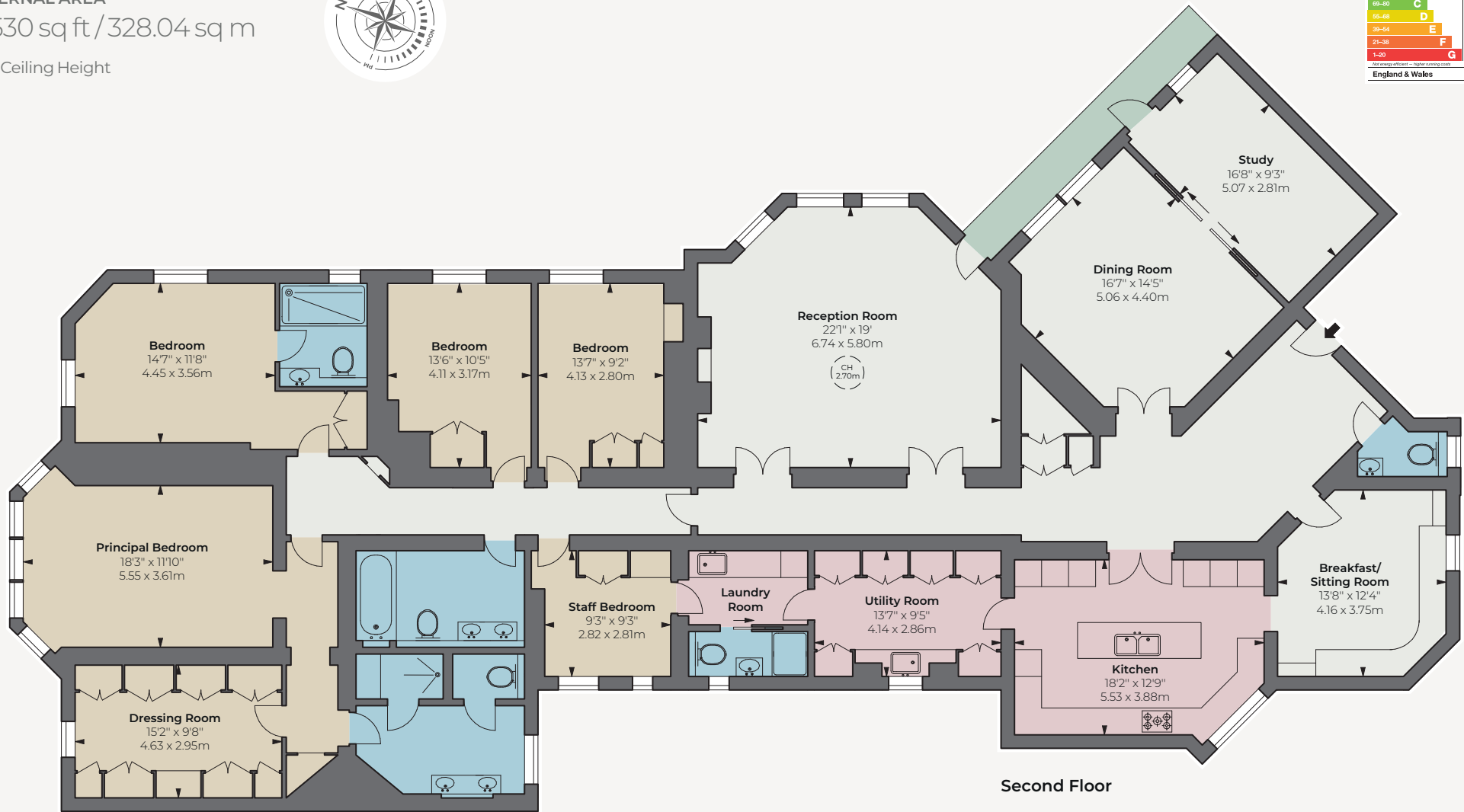
**APPROXIMATE GROSS
INTERNAL AREA**

3,530 sq ft / 328.04 sq m

CH: Ceiling Height



Energy Efficiency Rating		Current	Potential
92-100	A		
81-91	B		
69-80	C		
55-68	D		
39-54	E		
21-38	F		
1-20	G		
<small>Information on energy ratings can be found in the Energy Performance Certificate (EPC) for the property.</small>		78	86
<small>England & Wales</small>		<small>EU Directive 2002/91/EC</small>	



© Alex Winship Photography Ltd.