



THE KNIGHTSBRIDGE

KNIGHTSBRIDGE SW7



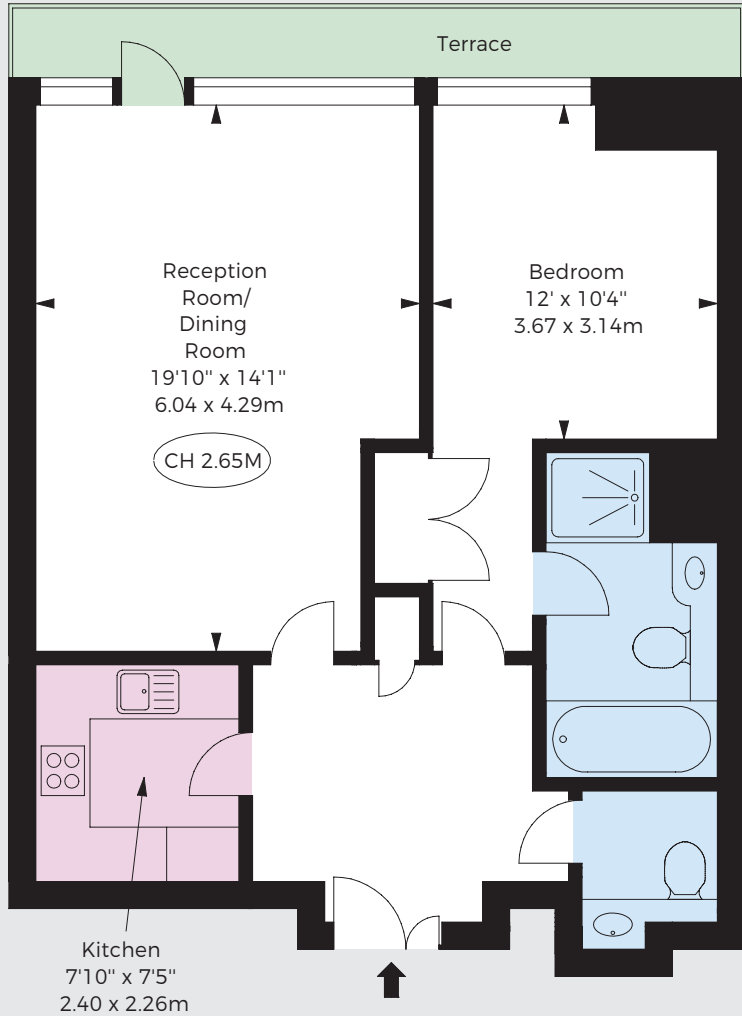
MARK TUNSTALL
PROPERTY



**APPROX. GROSS
INTERNAL AREA**
709 SQ FT (65.87 SQ M)

THIS FLOORPLAN IS FOR
GUIDANCE ONLY AND NOT FOR
VALUATION PURPOSES

Key :
CH - Ceiling Height



FIRST FLOOR



An immaculate one bedroom apartment on the first floor of a landmark building in the heart of Knightsbridge, well furnished in a smart neutral style, with wooden floors in the reception room and the benefit of a small balcony.

The Knightsbridge Apartments benefit from 24-hour concierge, valet parking, superb leisure facilities including a 21-metre pool and gym as well as a business centre for residents.

They are situated in the centre of Knightsbridge, moments from world-class shopping, bars and restaurants as well as the open space of Hyde Park.

Furnished

Local Authority: City of Westminster

Viewing strictly by appointment with Mark Tunstall Property

Energy Efficiency Rating		Current	Potential
Very energy efficient - lower running costs	A (92-100)		
B (81-91)			
C (69-80)			
D (55-68)			
E (39-54)			
F (21-38)			
Not energy efficient - higher running costs	G (1-20)		

England & Wales EU Directive 2002/91/EC



INFO@TUNSTALLPROPERTY.CO.UK
+44 (0)20 3011 1775

IMPORTANT NOTICE

THIS BROCHURE AND THE DESCRIPTIONS AND MEASUREMENTS HEREIN DO NOT CONSTITUTE REPRESENTATION AND WHILST EVERY EFFORT HAS BEEN MADE TO ENSURE ACCURACY, THIS CANNOT BE GUARANTEED. A COPY OF THE FULL ENERGY PERFORMANCE CERTIFICATE IS AVAILABLE UPON REQUEST. FEBRUARY 2019.