



# DAWN SANDOVAL

*Residential*

1 Bedrooms

Apartment

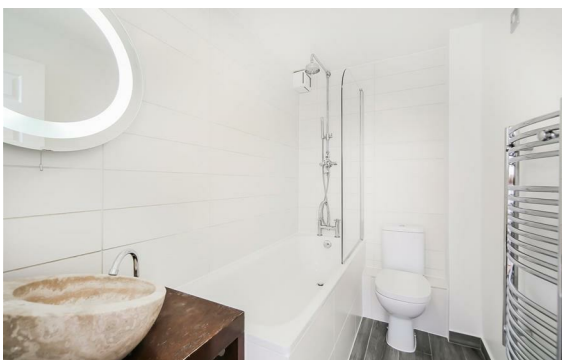
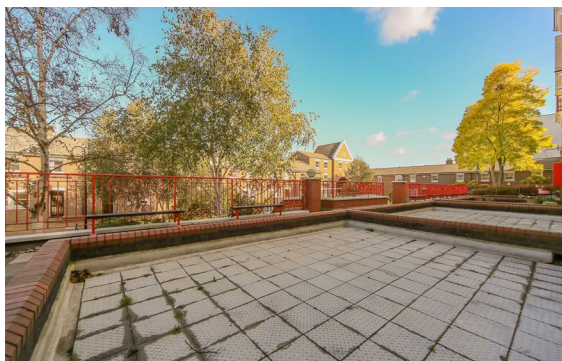
Located in London

£350,000



[info@dawnsandovalresidential.co.uk](mailto:info@dawnsandovalresidential.co.uk) [www.dawnsandovalresidential.co.uk](http://www.dawnsandovalresidential.co.uk)

0207 093 1702



**DAWN  
SANDOVAL**  
*Residential*

5 Indecon Square

Lightermans Road

London

E14 9DQ

0207 093 1702

[info@dawnsandovalresidential.com](mailto:info@dawnsandovalresidential.com)

[www.dawnsandovalresidential.co.uk](http://www.dawnsandovalresidential.co.uk)

We are delighted to offer for sale this spacious one bedroom apartment located within this private popular development.

### Energy Efficiency Rating: C

Agents Note: Whilst every care has been taken to prepare these particulars, they are for guidance purposes only. All measurements are approximate and are for general guidance purposes only and whilst every care has been taken to ensure their accuracy, they should not be relied upon and potential buyers/tenants are advised to recheck the measurements.