



DAWN SANDOVAL

Residential

2 Bedrooms

Apartment

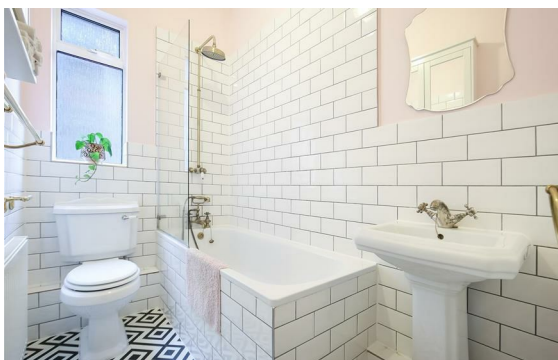
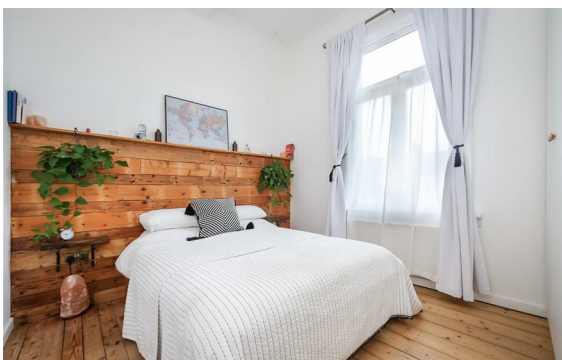
Located
in Woodford Green

£375,000



info@dawnsandovalresidential.cc www.dawnsandovalresidential.co.uk

0207 093 1702



Situated in peaceful Woodford Green is this immaculate two bedroom apartment for sale set on the raised ground floor of this converted Victorian home.

Energy Efficiency Rating: D

Agents Note: Whilst every care has been taken to prepare these particulars, they are for guidance purposes only. All measurements are approximate and are for general guidance purposes only and whilst every care has been taken to ensure their accuracy, they should not be relied upon and potential buyers/tenants are advised to recheck the measurements.

**DAWN
SANDOVAL**
Residential

5 Indescon Square
Lightermans Road
London
E14 9DQ

0207 093 1702

info@dawnsandovalresidential.

www.dawnsandovalresidential.co.uk