



WETHERELL

MAYFAIR'S FINEST PROPERTIES



Park Street, W1K

£2,250 Per week

Within one of Mayfair's premier portered buildings, a newly renovated two double bedroom, two bathroom apartment.

This stylish apartment has been meticulously designed to cater for modern city living.

The spacious double reception is ideal for relaxing and entertaining, and the kitchen has been fitted with the latest contemporary appliances.

Two large bedrooms with built-in wardrobes and luxury bathrooms complete the accommodation of this newly renovated flat. Air-conditioning has been fitted throughout.

Fountain House is located in the heart of Mayfair village, close to Hyde Park and the boutiques and restaurants on Mount Street.

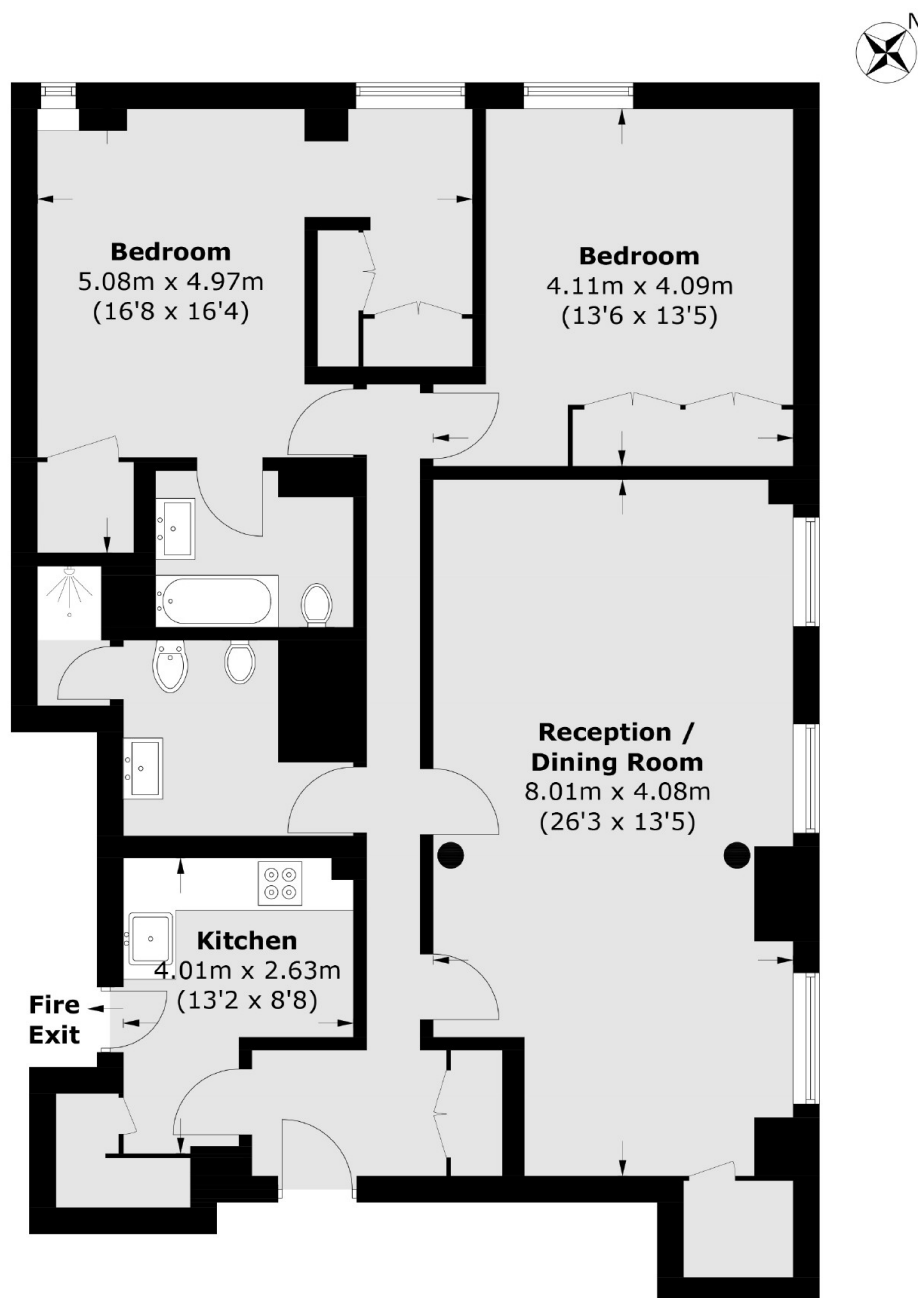


FEATURES

- Two Double Bedrooms • Two Bathrooms • Lift Access • 24-Hour Porter • Wooden Floors • Excellent Location •



Park Street,
London, W1K



Total area (approx.): 103.1 sq. m (1,109.7 sq. ft)