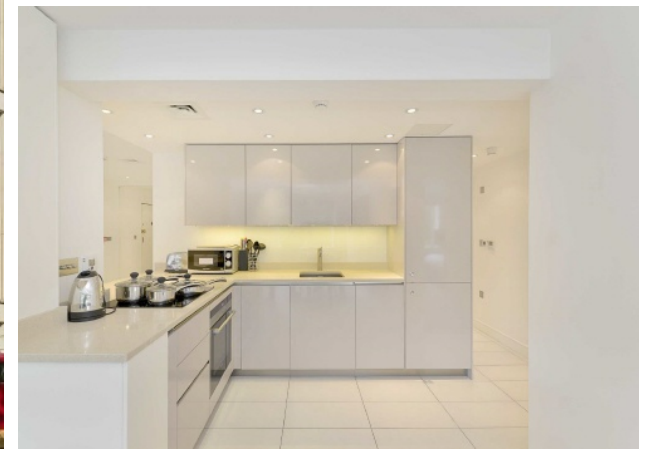


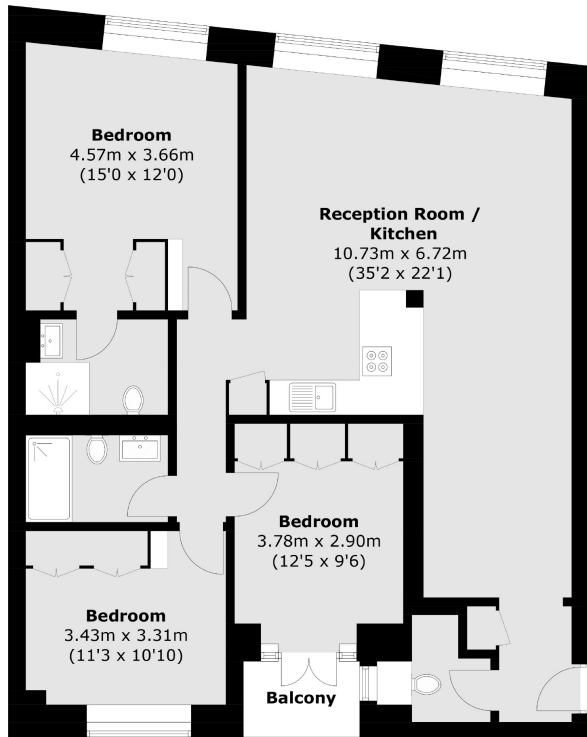


PICCADILLY

MAYFAIR W1J



THIS MODERN THREE DOUBLE BEDROOM FLAT IS SITUATED ON THE FIRST FLOOR OF A PORTERED BUILDING ON PICCADILLY WITH SOUTH FACING VIEWS OVER GREEN PARK.



Total area (approx.): 103.4 sq. m (1,113.0 sq. ft)
Balcony area (approx.): 2.6 sq. m (28.0 sq. ft)

There is an open plan reception room with fully integrated kitchen. The principal bedroom has built in storage and a modern en-suite bathroom.

The second and third bedrooms also benefits from built in storage and there is a separate family bathroom and guest w/c.

There are good transport links with Green Park underground station close by (Piccadilly, Jubilee and Victoria lines).

FEATURES

- Views Across Green Park
- Porter
- Lift Access
- Open Plan South facing Reception Room
- Principal Bedroom with En-Suite Bathroom
- Excellent Location

Price: £1,500 Per week

We aim to make our particulars both accurate and reliable. However they are not guaranteed; nor do they form part of an offer or contract. If you require clarification on any points then please contact us, especially if you're traveling some distance to view. Please note that appliances and heating systems have not been tested and therefore no warranties can be given as to their working order. Energy Rating: D

Piccadilly is an excellent location, it is on the doorstep to the shops and amenities of Mayfair and the West End.



WETHERELL
MAYFAIR'S FINEST PROPERTIES

102 Mount Street • London • W1K 2TH
T: 020 7529 5588 E: rentals@wetherell.co.uk

wetherell.co.uk