



WETHERELL
MAYFAIR'S FINEST PROPERTIES



PARK STREET, W1K

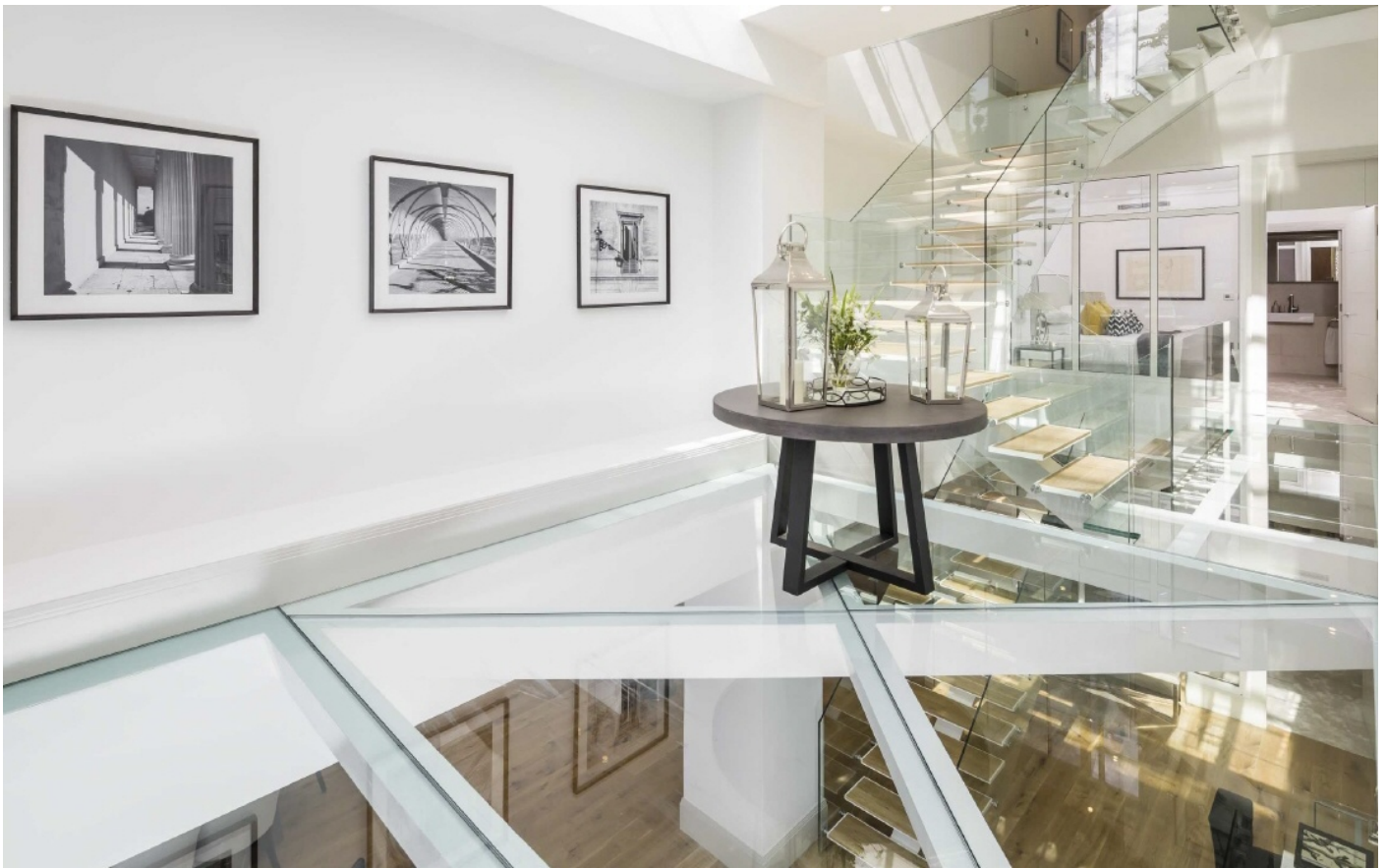
£4,038 PER WEEK

A unique and luxurious three bedroom triplex apartment with individual Park Lane entrance and private terrace with park views.

Meticulously designed for luxurious city living this property can be accessed via its own entrance on Park Lane or via the main building entrance located on Park Street. Once inside you are greeted by a spacious hallway and an imposing bespoke glass staircase connecting all three floors, leading downstairs to the vast reception room. Perfect for entertaining with its high specification and open-plan kitchen with white gloss units and integrated Miele appliances.

Stairs lead up to an opulent master bedroom suite on the upper floor which has a large dressing area, ample cupboard space and oversized master en suite with a walk in shower and separate bath. In addition, there are also lovely views of Hyde Park with its own private West facing terrace spanning across the width of the property. The apartment also benefits from two further en suite bedrooms, one on each floor of the apartment.

ORIGINALLY A COUNTRY LANE, PARK LANE FIRST BECAME A FASHIONABLE RESIDENTIAL ADDRESS IN THE EIGHTEENTH CENTURY.



FEATURES

- Large Private Terrace Overlooking Hyde Park • Master Bedroom with 'Walk In Wardrobe' and En Suite Bathroom • Two Further Double Bedrooms (Both En Suite) • 24hr Portage •



PARK STREET, LONDON, W1K

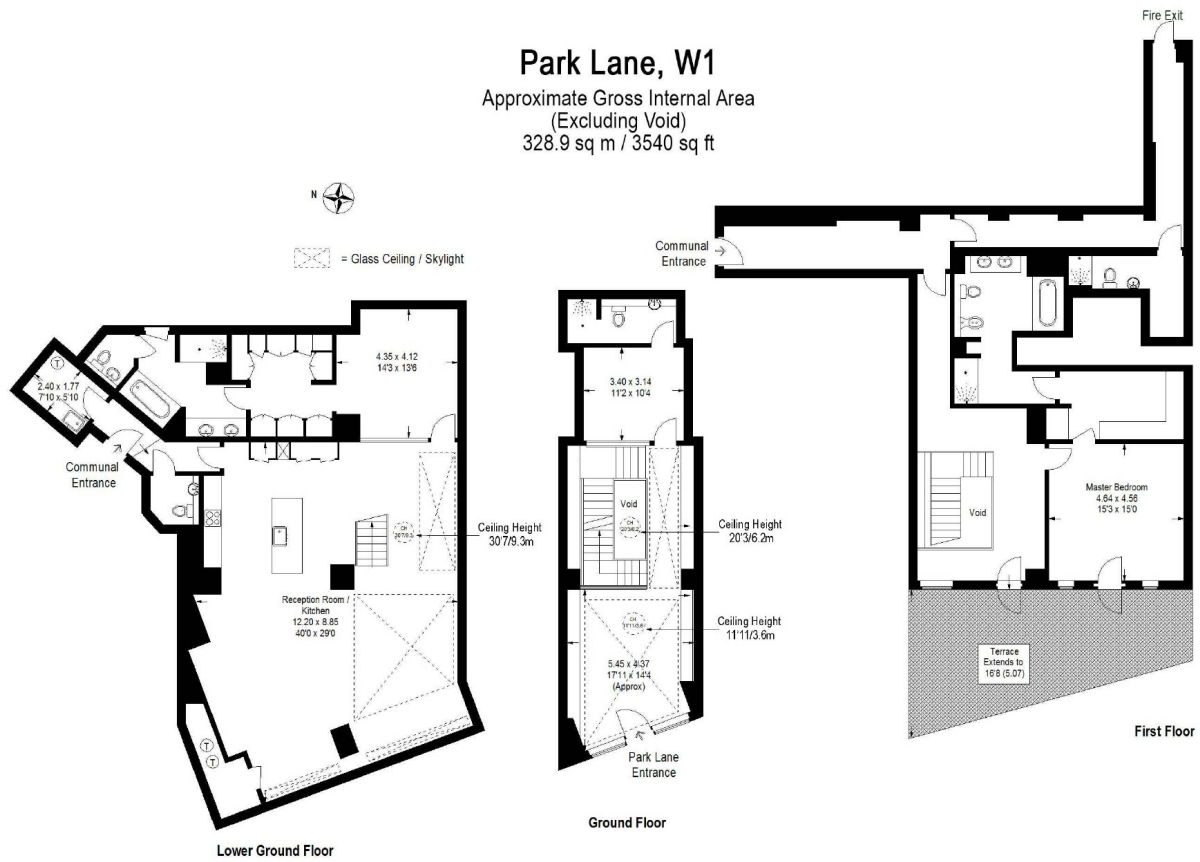


Illustration for identification purposes only, measurements are approximate, not to scale.
Floorplanssketch.com © 2016 (10233015)