



HAYS MEWS

MAYFAIR



£2,250 PER WEEK
FURNISHED

WETHERELL

MAYFAIR'S FINEST PROPERTIES

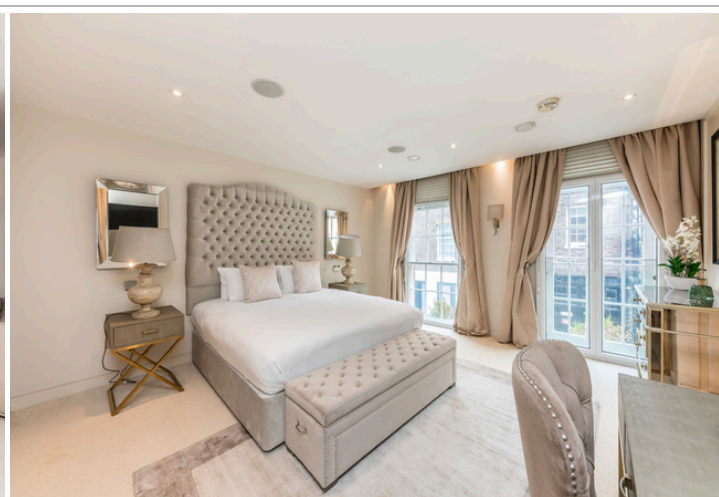
102 Mount Street · London · W1K 2TH
T: 020 7529 5588 E: rentals@wetherell.co.uk
wetherell.co.uk

NO-ONE KNOWS MAYFAIR BETTER THAN WETHERELL





HAYS MEWS MAYFAIR



A recently renovated four bedroom house located on a stunning Mayfair mews. This house has a fabulous top floor reception room with an abundance of natural light.

FOUR BEDROOMS • FOUR BATHROOMS • TOP FLOOR RECEPTION ROOM •
OUTDOOR TERRACE • RECENTLY RENOVATED • PRIVATE PARKING SPACE

NO-ONE KNOWS MAYFAIR BETTER THAN WETHERELL





HAYS MEWS MAYFAIR

A recently renovated four bedroom house located on a stunning Mayfair mews. This house has a fabulous top floor reception room with an abundance of natural light.

Split over three floors, Hays Mews offers generous accommodation provided by two large reception rooms, fully fitted kitchen, main bedroom with en suite and three further bedrooms, making this property the perfect family home or central London base.

Enviably located in the heart of Mayfair village, and conveniently close to Annabel's Mayfair. Only a short walk from some of Mayfair's finest restaurants and to the green expanses of Hyde Park.

Accommodation:

- * Four Bedrooms
- * Four Bathrooms
- * Top Floor Reception Room
- * Outdoor Terrace
- * Recently Renovated
- * Private Parking Space

*Wetherell & Co. (Mayfair) Ltd. is a member of the RICS Client money protection Scheme, and also a member of the NAEA, ARLA Propertymark and the property Ombudsman which are Redress schemes.

Any Tenancy that falls outside of the housing act will be subject to Tenant fees. You can find out more details on the Wetherell website or by contacting us directly.

£2,250 PER WEEK
FURNISHED

Wetherell have no authority to make or give any representations or warranties in relation to the property. These particulars do not form part of any offer or contract and must not be relied upon as statements or representations of fact. Any areas, measurements or distances are approximate. The text, photographs and plans are for guidance only and are not necessarily comprehensive. It should not be assumed that the property has all the necessary planning, building regulation or other consents and Wetherell have not tested any services, equipment or facilities. Purchasers must satisfy themselves by inspection or otherwise. 2021

WETHERELL
MAYFAIR'S FINEST PROPERTIES

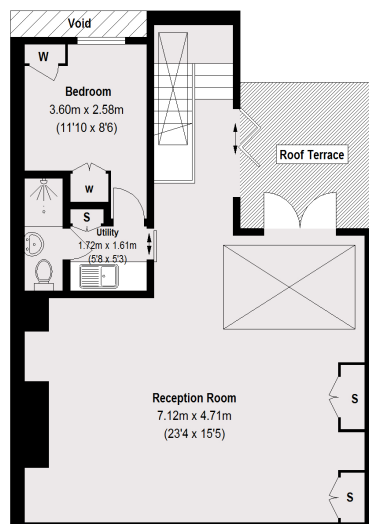
102 Mount Street · London · W1K 2TH
T: 020 7529 5588 E: rentals@wetherell.co.uk
wetherell.co.uk

NO-ONE KNOWS MAYFAIR BETTER THAN WETHERELL

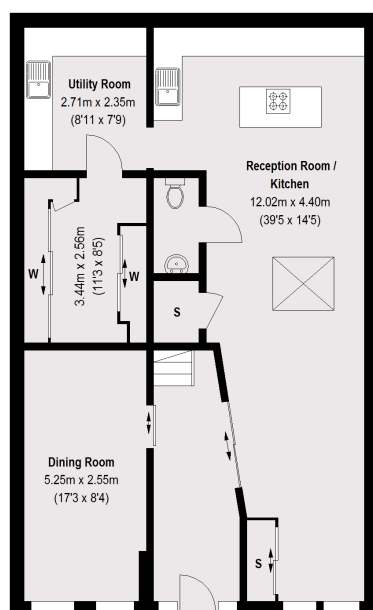




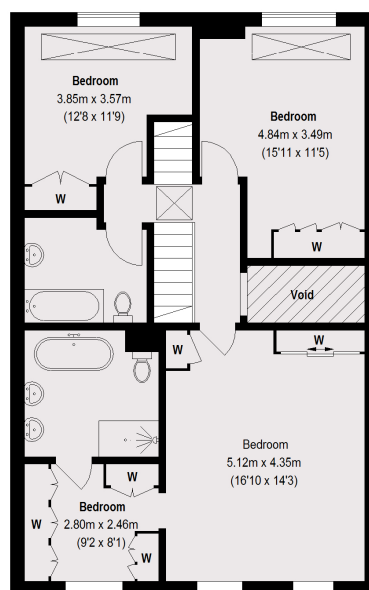
HAYS MEWS MAYFAIR



Second Floor



Ground Floor



First Floor

Total area (approx.): (Excluding Void) 224.49 sq. m (2416 sq. ft)
Roof Terrace: 8.85 sq. m (95 sq. ft)

Wetherell have no authority to make or give any representations or warranties in relation to the property. These particulars do not form part of any offer or contract and must not be relied upon as statements or representations of fact. Any areas, measurements or distances are approximate. The text, photographs and plans are for guidance only and are not necessarily comprehensive. It should not be assumed that the property has all the necessary planning, building regulation or other consents and Wetherell have not tested any services, equipment or facilities. Purchasers must satisfy themselves by inspection or otherwise. 2021

WETHERELL

MAYFAIR'S FINEST PROPERTIES

102 Mount Street · London · W1K 2TH
T: 020 7529 5588 E: rentals@wetherell.co.uk
wetherell.co.uk



NO-ONE KNOWS MAYFAIR BETTER THAN WETHERELL