



WETHERELL
MAYFAIR'S FINEST PROPERTIES



LANCASHIRE COURT, W1S

£1,700 PER WEEK

A impeccably presented, two bedroom maisonette, featuring a large open plan living space and terrace within a beautifully converted period property. Located between Brook Street and prestigious New Bond Street.

The residence boasts a spacious reception area, contemporary kitchen and a bright sun room dining area with south west facing views leading to a decked roof terrace.

The property comprises of two generously sized double bedrooms, each with its own modern bathroom.

LANCASHIRE COURT IS SITUATED ON A QUIET PEDESTRIANISED STREET JUST OFF BROOK STREET. THE PROPERTY IS CLOSE TO BOTH OXFORD STREET AND THE OPEN SPACES OF GROSVENOR SQUARE AND IS WELL LOCATED FOR A NUMBER OF NEARBY CAFES,

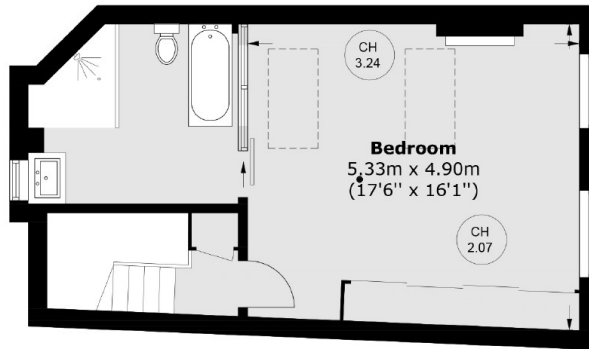


FEATURES

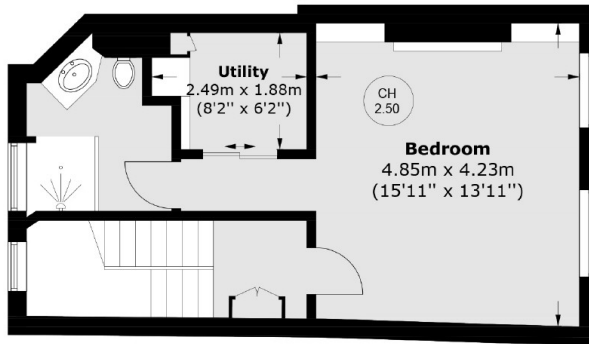
- Two Bedrooms • Two En-Suite Bathrooms • Terrace • Wooden Flooring • Air Conditioning • Excellent Location •



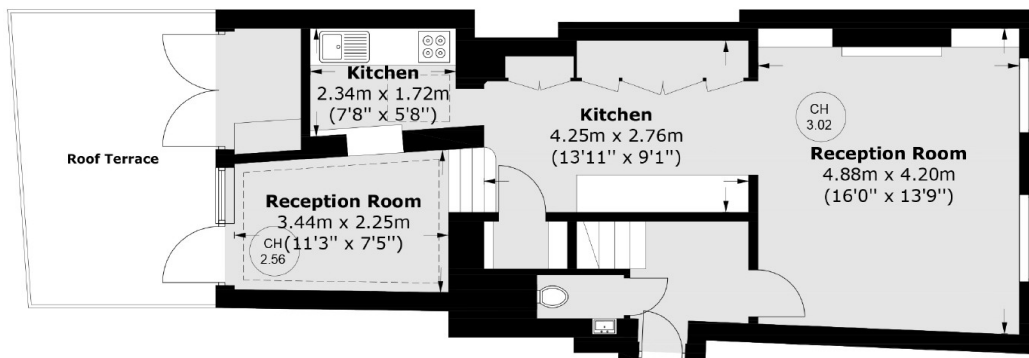
LANCASHIRE COURT, LONDON, W1S



Third Floor



Second Floor



First Floor

Total area (approx.): 139.4 sq. m (1,500.5 sq. ft)
Roof Terrace : 14.7 sq. m (158.2 sq. ft)



WETHERELL
MAYFAIR'S FINEST PROPERTIES

102 Mount Street,
London, W1K 2TH
T: 020 7529 5566
E: sales@wetherell.co.uk

We aim to make our particulars both accurate and reliable. However they are not guaranteed; nor do they form part of an offer or contract. If you require clarification on any points then please contact us, especially if you're traveling some distance to view. Please note that appliances and heating systems have not been tested and therefore no warranties can be given as to their working order.

wetherell.co.uk