

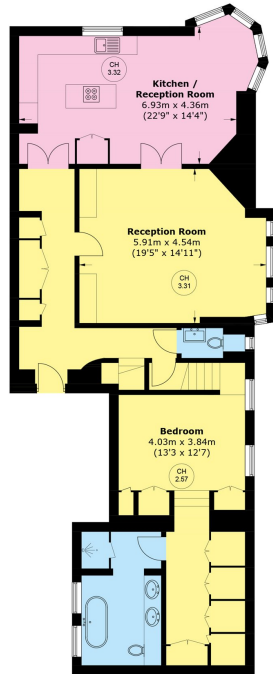


Green Street

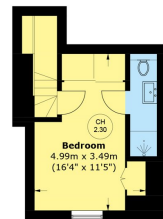
Mayfair W1K



A contemporary two-bedroom first-floor apartment set within a distinguished end-of-terrace period building on one of Mayfair's most sought-after residential streets, featuring high ceilings, abundant natural light, generous storage, and two luxurious bathrooms.



First Floor



Second Floor

Total area (approx.): 146.1 sq. m (1,572.6 sq. ft)

Thoughtfully laid out and finished to a high standard, the apartment offers generous living space, including a bright and expansive reception room and formal dining room, both featuring large south-facing bay windows. A set of double doors connects the two spaces, allowing them to be separated or opened to create a flowing layout, ideal for entertaining. Wooden flooring runs throughout the reception areas and kitchen, enhancing the sense of space and continuity.

There are two well-proportioned double bedrooms.

FEATURES

- High Spec Fixtures, Fittings and Furnishings
- Two Large Double Bedrooms
- Ample Storage
- High Ceilings
- Wooden Flooring
- Excellent Location

Price: £2,307 Per week

We aim to make our particulars both accurate and reliable. However they are not guaranteed; nor do they form part of an offer or contract. If you require clarification on any points then please contact us, especially if you're traveling some distance to view. Please note that appliances and heating systems have not been tested and therefore no warranties can be given as to their working order. **Energy Rating:**

Green Street is located to the east of Hyde Park off Park Lane. The property is within reach of the many amenities, restaurants and shops offered by Oxford Street, South Audley Street and their surrounding areas. The closest underground stations are Marble Arch (Central Line), located 0.2 miles from the property and Bond Street (Central and Jubilee Lines), located 0.3 miles from the property.



WETHERELL
MAYFAIR'S FINEST PROPERTIES

102 Mount Street • London • W1K 2TH
T: 020 7529 5588 E: rentals@wetherell.co.uk

wetherell.co.uk

NO ONE KNOWS MAYFAIR BETTER THAN WETHERELL