



Park Street, W1K

£1,100 Per week

Dexters



## Park Street, London, W1K

Within one of Mayfair's premier portered buildings, a newly renovated two double bedroom, two bathroom apartment situated on the first floor.

This stylish apartment spans 881 sq.ft and has been meticulously designed to cater for modern city living.

The spacious double reception is ideal for entertaining and the large open plan kitchen has been fitted with the latest contemporary appliances.

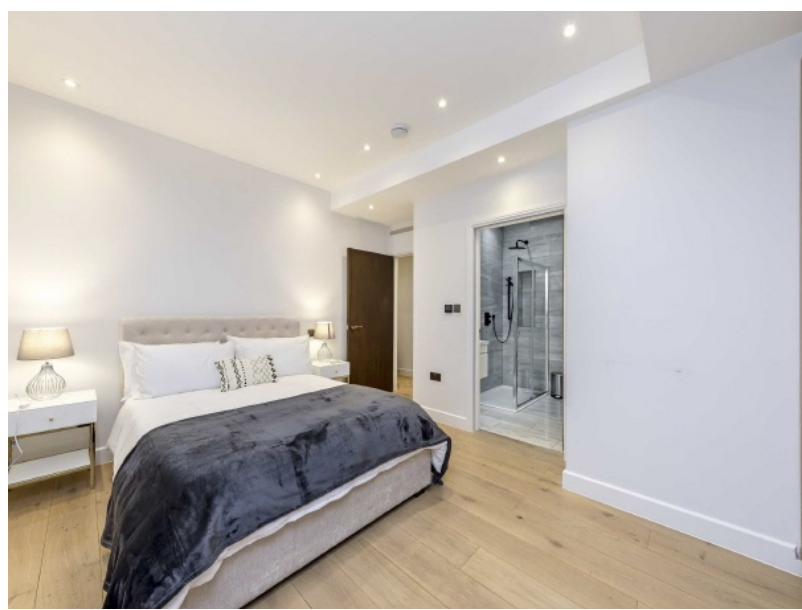
Two large bedroom suites with built-in wardrobes and spacious en suite bathrooms complete the accommodation of this newly renovated flat. Air-conditioning has been fitted throughout.

Fountain House is located in the heart of Mayfair village, close to Hyde Park and the boutiques and restaurants on Mount Street.

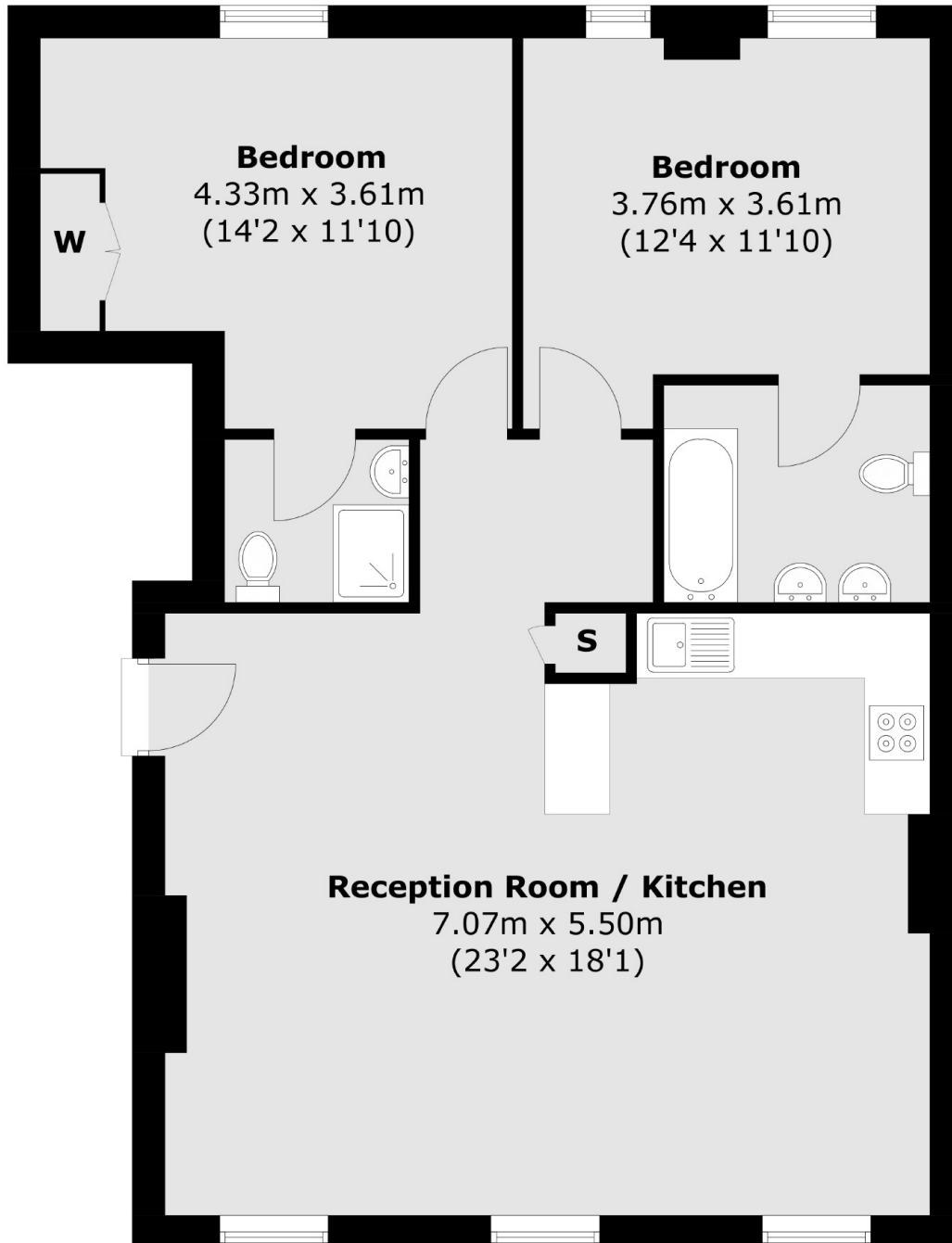
### Features

- Two Double Bedrooms
- Two Bathrooms
- Lift Access
- 24-Hour Porter
- Wooden Floors
- Excellent Location





Park Street,  
London, W1K



## First Floor

Total area (approx.): 81.9 sq. m (881.6 sq. ft)

**Dexters**

Mayfair  
102 Mount Street, London,  
W1K 2TH

Lettings  
020 7529 5588

Energy Rating: C. We aim to make our particulars both accurate and reliable. However they are not guaranteed; nor do they form part of an offer or contract. If you require clarification on any points then please contact us, especially if you're traveling some distance to view. Please note that appliances and heating systems have not been tested and therefore no warranties can be given as to their good working order.

 **RICS** | Regulated  
Estate Agent  
and Letting Agent

[dexters.co.uk](http://dexters.co.uk)