

HERTFORD STREET

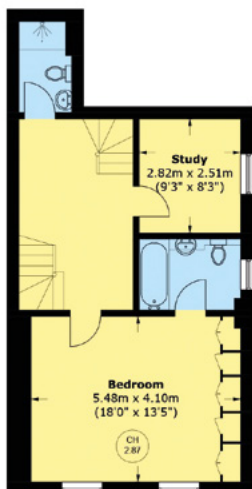
MAYFAIR, W1J



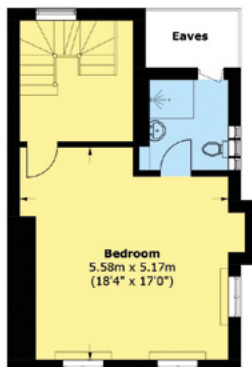


The charming end-of-terrace townhouse extending to approximately 3,143 sq. ft, offers well-proportioned living throughout, creating an exceptional modern family home. The house has been newly renovated whilst retaining many period features and has a fantastic roof terrace. There is a separate utility room and staff accommodation on the lower ground floor.

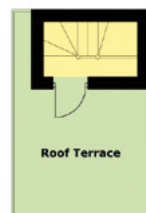
The house is located on the corner of Hertford Street in the heart of Shepherd market, moments from the open green spaces of Green Park and Hyde Park.



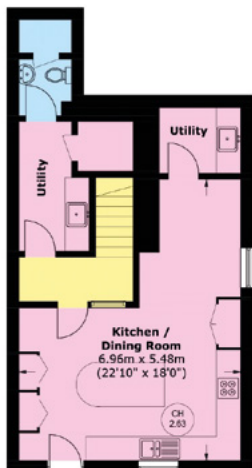
Third Floor



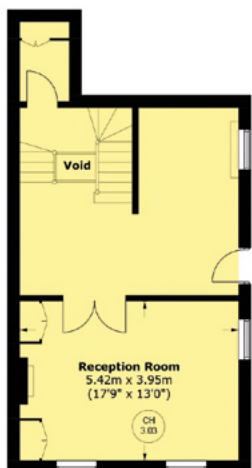
Fourth Floor



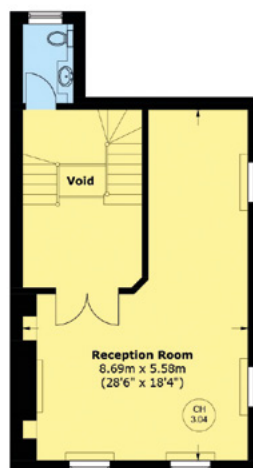
Fifth Floor



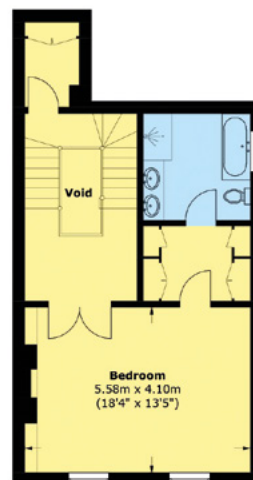
Lower Ground Floor



Ground Floor



First Floor



Second Floor



NEWLY RENOVATED

FOUR BEDROOMS

FOUR BATHROOMS

ROOF TERRACE

TWO RECEPTION ROOMS

AIR CONDITIONING

Price: £4,000 per week



WETHERELL
MAYFAIR'S FINEST PROPERTIES

102 Mount Street, London, W1K 2TH

020 7529 5566 • wetherell.co.uk

TOTAL AREA (APPROX.) 3,237.7 SQ. FT (300.8 SQ. M)
TERRACE: 120.5 SQ. FT (11.2 SQ. M) (EXCLUDING EAVES)

Wetherell have no authority to make or give any representations or warranties in relation to the property. These particulars do not form part of any offer or contract and must not be relied upon as statements or representations of fact. Any areas, measurements or distances are approximate. The text, photographs and plans are for guidance only and are not necessarily comprehensive. It should not be assumed that the property has all the necessary planning, building regulation or other consents and Wetherell have not tested any services, equipment or facilities. Purchasers must satisfy themselves by inspection or otherwise. EPC: D. November 2025.