



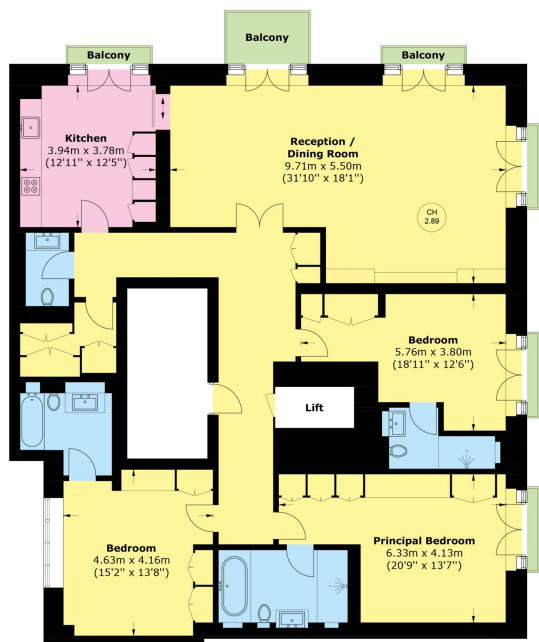
# Chesterfield Hill

## Mayfair W1J



A truly stunning three bedroom apartment situated within the new development of 8 Chesterfield Hill, which has been impeccably interior designed by Martin Kemp Design, this apartment is a one of a kind Mayfair residence.





Total area (approx.): 179.1 sq. m (1,927.8 sq. ft)  
(Excluding Lift)  
Balcony: 5.4 sq. m (58.1 sq. ft)

The building has been architecturally designed to blend with the neighbouring heritage and architecture. A property offering both historic and contemporary style in the heart of Mayfair.

The apartment includes three well proportioned en-suite double bedrooms, open plan kitchen & living room offering an exceptional space for both entertaining and dining, guest WC as well as air conditioning and underfloor heating throughout.

#### FEATURES

- Three En Suite Double Bedrooms
- Porter
- Air Conditioning
- Newly Renovated and Interior Designed
- Luxury Fixtures, Fittings and Furnishings
- Excellent Location

Price: £7,000 Per week

We aim to make our particulars both accurate and reliable. However they are not guaranteed; nor do they form part of an offer or contract. If you require clarification on any points then please contact us, especially if you're traveling some distance to view. Please note that appliances and heating systems have not been tested and therefore no warranties can be given as to their working order. Energy Rating:

Chesterfield Hill is a discreet street, situated in the heart of Mayfair and within close proximity of Hyde Park, Green Park, St James and Knightsbridge.



**WETHERELL**  
MAYFAIR'S FINEST PROPERTIES

102 Mount Street • London • W1K 2TH  
T: 020 7529 5588 E: [rentals@wetherell.co.uk](mailto:rentals@wetherell.co.uk)

[wetherell.co.uk](http://wetherell.co.uk)

NO ONE KNOWS MAYFAIR BETTER THAN WETHERELL