



BRUTON PLACE

MAYFAIR W1J



AN IMPRESSIVE TWO BEDROOM APARTMENT WITH COMFORT COOLING AND UNDERFLOOR HEATING. THE APARTMENT HAS BEEN REFURBISHED TO A VERY HIGH STANDARD AND INCORPORATES CUTTING-EDGE FINISHES THROUGHOUT.



Entering the property from the fourth floor you are greeted by a large hallway that leads to an L-shaped reception room with open plan kitchen and breakfast bar. The reception room provides plenty of space for separate lounge and dining areas.

Bruton Place is a vibrant mews with a mixture of quality restaurants and chic boutiques, located in the heart of Mayfair to the north east of Berkeley Square.

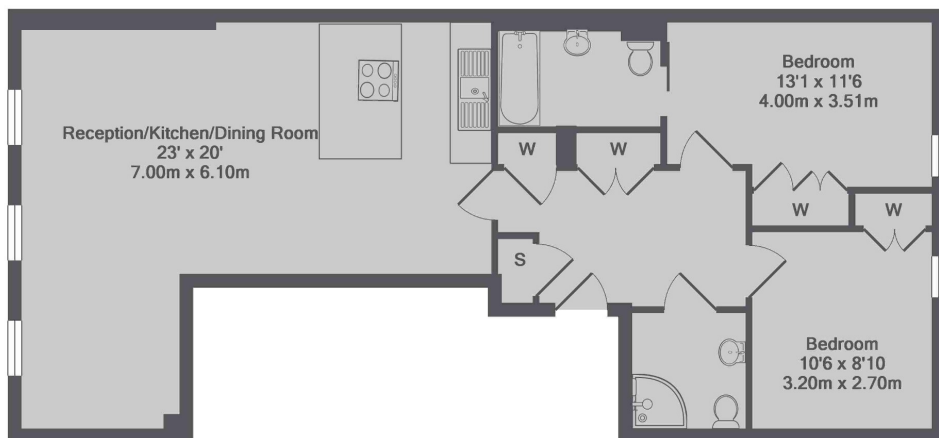
At the opposite end of the hallway is a master bedroom suite with wardrobe storage and en suite bathroom. The second double bedroom is also furnished with sufficient storage space. A shower room accessible from the hallway services bedroom two.

FEATURES

- Wooden Flooring
- Furnished
- Modern Decor
- Comfort Cooling
- Under Floor Heating
- Two Double Bedrooms

Price: £1,000 Per week

We aim to make our particulars both accurate and reliable. However they are not guaranteed; nor do they form part of an offer or contract. If you require clarification on any points then please contact us, especially if you're traveling some distance to view. Please note that appliances and heating systems have not been tested and therefore no warranties can be given as to their working order. Energy Rating: B



Bruton Place, W1J 6LY
Total Approx. Floor Area 760 Sq.Ft. (70.6 Sq.M.)



WETHERELL
MAYFAIR'S FINEST PROPERTIES

102 Mount Street • London • W1K 2TH
T: 020 7529 5588 E: rentals@wetherell.co.uk

wetherell.co.uk

NO ONE KNOWS MAYFAIR BETTER THAN WETHERELL