



**WETHERELL**  
MAYFAIR'S FINEST PROPERTIES



## HERTFORD STREET, W1J

£1,600,000

A well-proportioned two-bedroom apartment situated on the fifth floor of this sought-after Art Deco building in the heart of Mayfair. The flat benefits from a west-facing aspect with charming views down Hertford Street, offering excellent natural light throughout.

A well-proportioned two-bedroom apartment situated on the fifth floor of this sought-after Art Deco building in the heart of Mayfair. The flat benefits from a west-facing aspect with charming views down Hertford Street, offering excellent natural light throughout.

Accommodation comprises a spacious double reception room, a separate fitted kitchen, two double bedrooms, a shower room, and a guest cloakroom.

A well-maintained, portered building with a 24-hour concierge, lift access, and communal central heating and hot water.

IDEALLY POSITIONED MOMENTS FROM SHEPHERD'S MARKET, HYDE PARK, AND GREEN PARK UNDERGROUND STATION, THIS APARTMENT OFFERS AN EXCELLENT OPPORTUNITY TO ACQUIRE A CLASSIC MAYFAIR RESIDENCE IN A PRIME CENTRAL LONDON LOCATION.

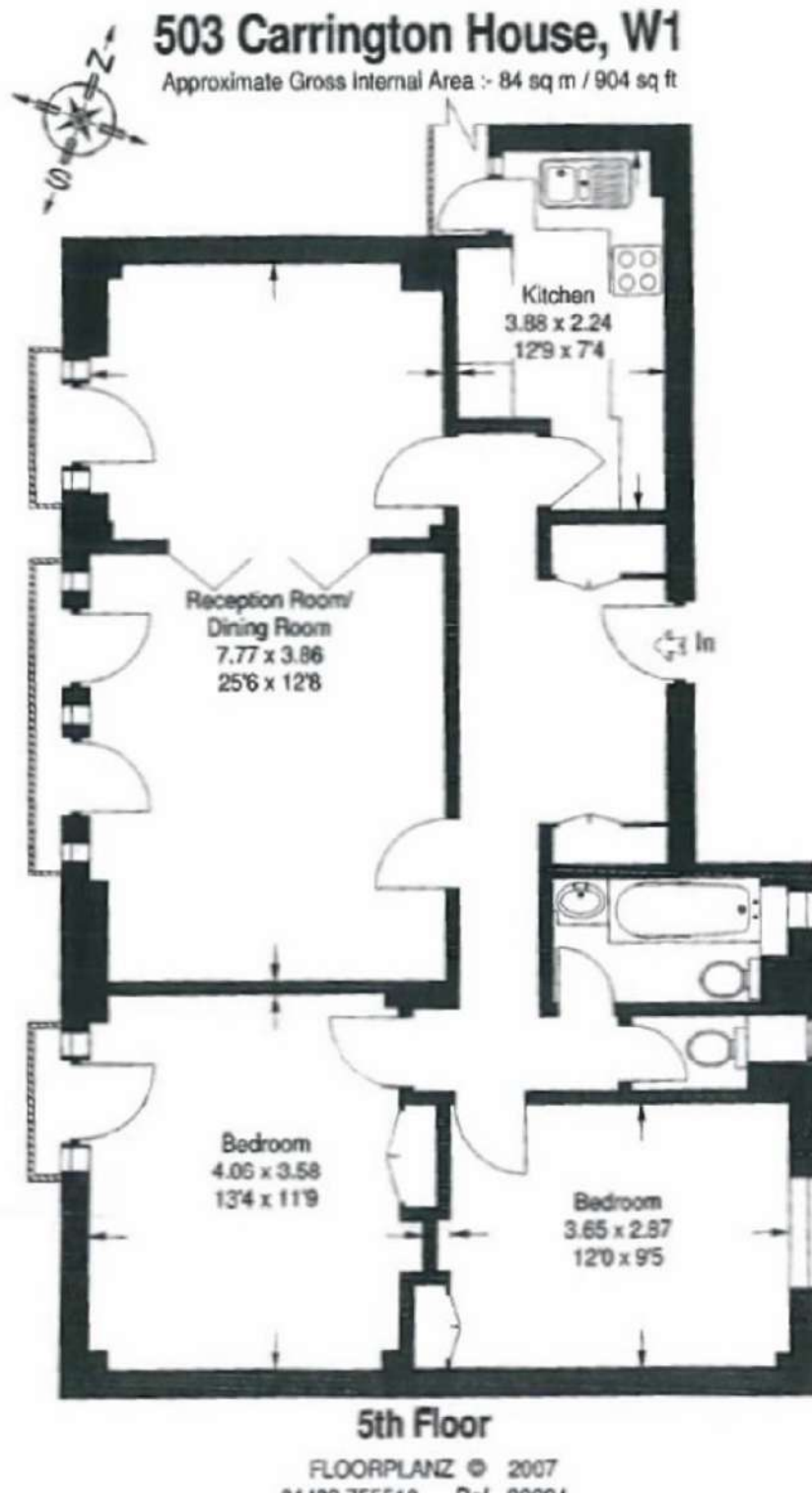


## FEATURES

- Shower Room • Guest WC • Double Reception Room • Lift • 24-Hour Porter •



# HERTFORD STREET, LONDON, W1J



**WETHERELL**  
MAYFAIR'S FINEST PROPERTIES

102 Mount Street,  
London, W1K 2TH

T: 020 7529 5566

E: [sales@wetherell.co.uk](mailto:sales@wetherell.co.uk)

We aim to make our particulars both accurate and reliable. However they are not guaranteed; nor do they form part of an offer or contract. If you require clarification on any points then please contact us, especially if you're traveling some distance to view. Please note that appliances and heating systems have not been tested and therefore no warranties can be given as to their working order.

[wetherell.co.uk](http://wetherell.co.uk)