



# WETHERELL

MAYFAIR'S FINEST PROPERTIES



## MOUNT STREET, W1K

£3,950,000

Positioned on Mayfair's finest street, a well presented three-bedroom apartment with lift and long lease.

Situated on the third floor, with lift, and measuring 1,375 sq. Ft, this bright apartment offers fantastic space with immediate access to everything Mayfair has to offer.

There is a large reception room, over 27 feet in length, with is flooded with natural light from the 8 south facing windows. There is a separate kitchen and additional cloakroom. The principal bedroom suite is quietly located at the rear of the apartment and benefits from built in wardrobes and an en suite bathroom. There is a separate shower room and two further double bedrooms, both with built in wardrobes. The furniture shown in the images is computer generated.

Tenure: Leasehold, approximately 101 years remaining

Annual service charge: Approximately £12,715

Ground Rent: TBC

MOUNT STREET AND ITS SURROUNDING STREETS AND GARDENS MAKE UP ONE OF THE MOST UNIQUE VILLAGES IN LONDON WHERE INTERNATIONAL LUXURY BRANDS RUB SHOULDERS WITH HERITAGE, CRAFTSMEN, AND MICHELIN STAR DINING.





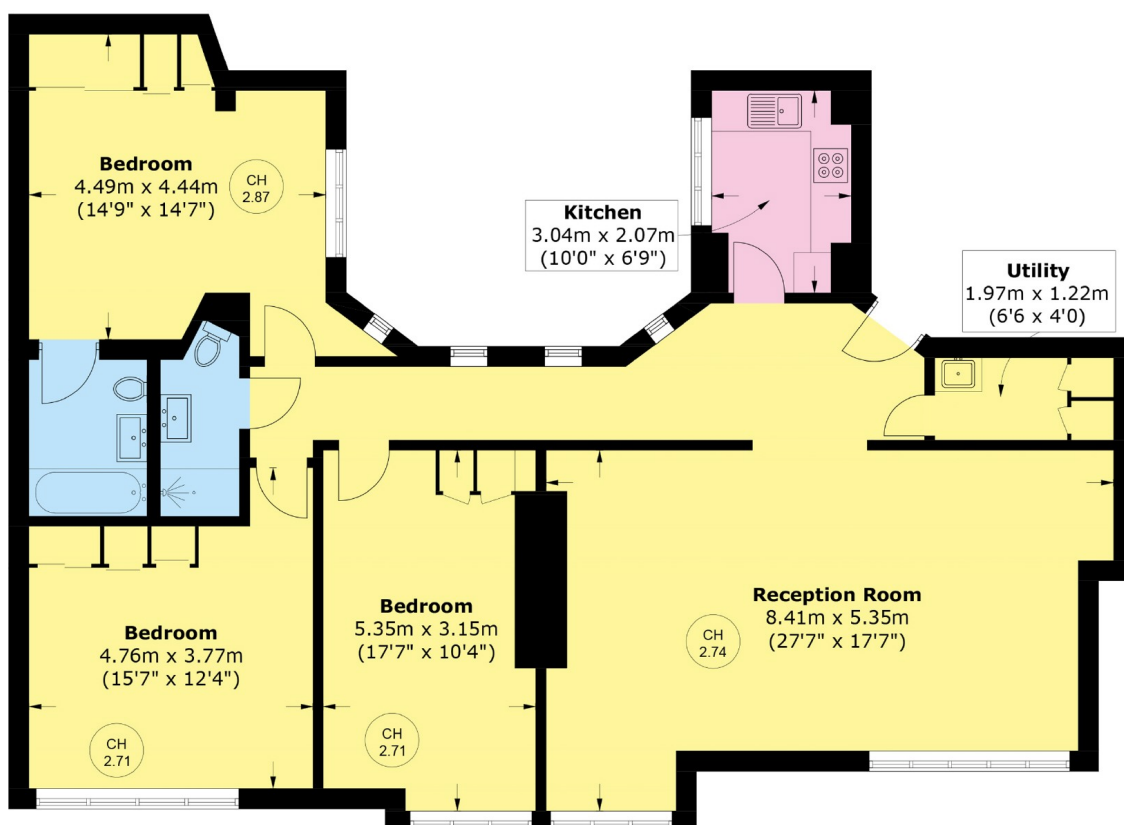
## FEATURES

- Mount Street • Three bedrooms • Two bathrooms • Lateral • 101 year lease • Lift •





# MOUNT STREET, LONDON, W1K



## Third Floor

Total area (approx.): 127.8 sq. m (1,375.6 sq. ft)



**WETHERELL**  
MAYFAIR'S FINEST PROPERTIES

102 Mount Street,  
London, W1K 2TH

T: 020 7529 5566

E: [sales@wetherell.co.uk](mailto:sales@wetherell.co.uk)

We aim to make our particulars both accurate and reliable. However they are not guaranteed; nor do they form part of an offer or contract. If you require clarification on any points then please contact us, especially if you're traveling some distance to view. Please note that appliances and heating systems have not been tested and therefore no warranties can be given as to their working order.

[wetherell.co.uk](http://wetherell.co.uk)