

MOUNT STREET

MAYFAIR W1

AN IMMACULATELY PRESENTED
THREE BEDROOM APARTMENT
OVERLOOKING MOUNT STREET







THE PROPERTY

Set on the second floor of a handsome period building, this lateral apartment of 2,338 sq ft has three metre ceiling heights and offers the finest Mayfair Village accommodation.

The apartment comprises a generous 22 sq ft reception room with a south west facing aspect overlooking Mount Street, plus a separate formal dining room and adjoining kitchen.

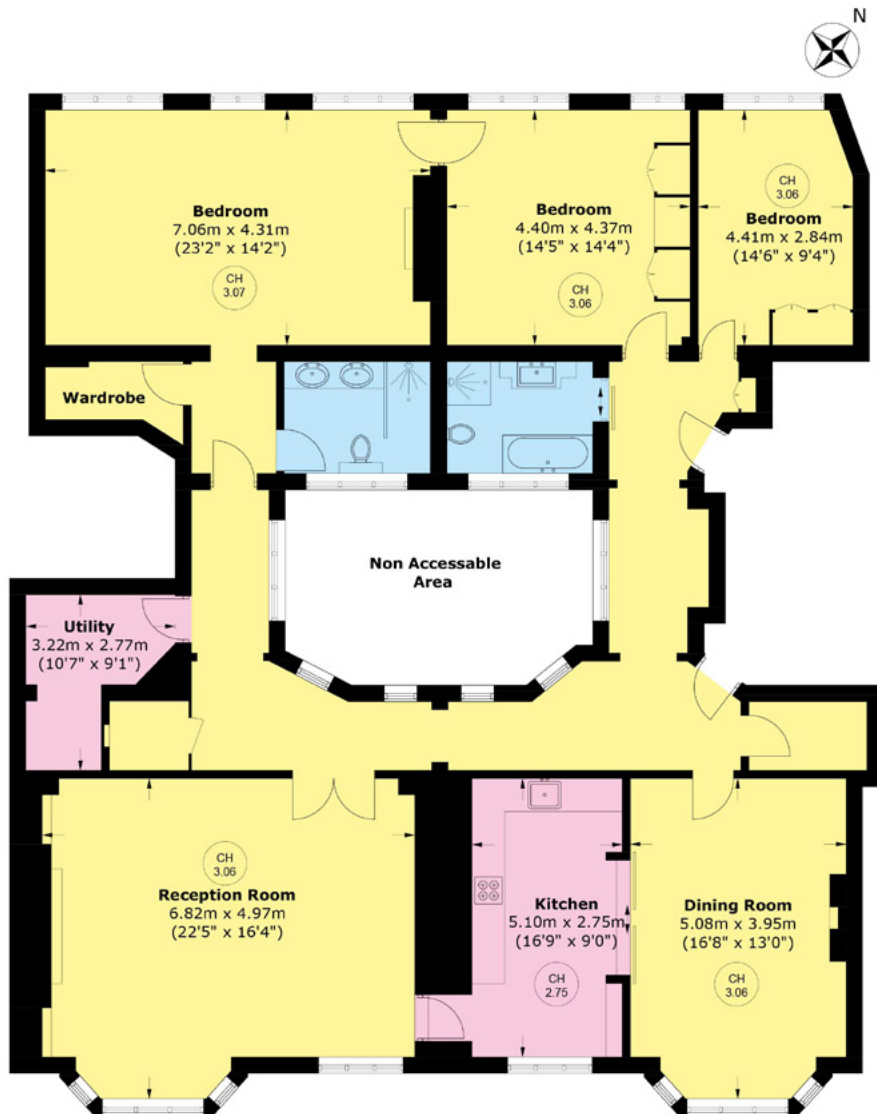
The three bedrooms are quietly located at the rear of the property. The large principal suite benefits from a walk-in wardrobe and an ensuite shower room with dual sink. The two other double bedrooms are well proportioned with built-in wardrobes. There is a separate guest bathroom and a utility room off the hallway.

This purpose-built block has lift access and a smart entrance hallway.

THE AREA

18 Mount street is a fine example of classic Mayfair architecture and perfectly located for the private members clubs, galleries, and restaurants that Mayfair has to offer; including Scott's, George and Annabel's. Mount Street gardens, prestigious Grosvenor Square and the open spaces of Hyde Park are all within a short walking distance.





Second Floor

TOTAL AREA(APPROX.):
2,338.9 SQ. FT (217.3 SQ. M)



MOUNT STREET · SOUTH FACING
THREE BEDROOMS · LIFT · 44 SQ. FT FRONTAGE

Price: £7,950,000

Lease: 100 years remaining

Service charge: £20,765 per annum



WETHERELL

MAYFAIR'S FINEST PROPERTIES

102 Mount Street, London, W1K 2TH

020 7529 5566 • wetherell.co.uk

Wetherell have no authority to make or give any representations or warranties in relation to the property. These particulars do not form part of any offer or contract and must not be relied upon as statements or representations of fact. Any areas, measurements or distances are approximate. The text, photographs and plans are for guidance only and are not necessarily comprehensive. It should not be assumed that the property has all the necessary planning, building regulation or other consents and Wetherell have not tested any services, equipment or facilities. Purchasers must satisfy themselves by inspection or otherwise. October 2025.