

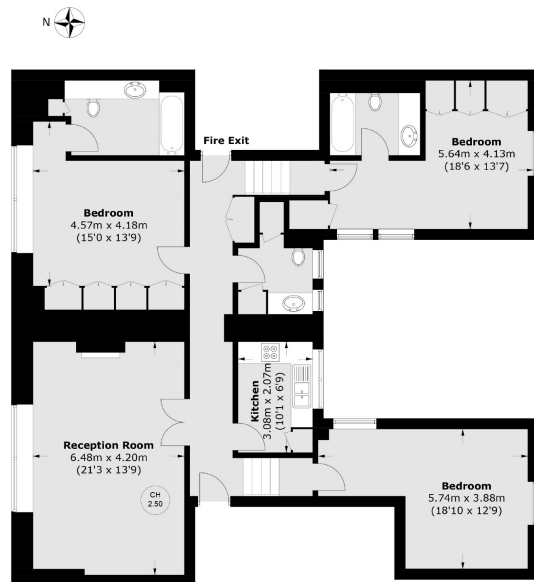


MOUNT STREET

MAYFAIR W1K



SET WITHIN ONE OF MAYFAIR'S MOST PRESTIGIOUS ADDRESSES, THIS ELEGANT THREE BEDROOM APARTMENT COMBINES TIMELESS SOPHISTICATION WITH CONTEMPORARY REFINEMENT, EVOKING A LUXURIOUS FEEL.



Fourth Floor

Total area (approx.): 135.8 sq. m (1,461.7 sq. ft)

The interiors are finished to an exceptional standard, blending classic details with modern comforts. Refined finishes create a sense of grandeur, while the overall design delivers a warm and inviting ambience.

Situated on Mount Street, renowned for its world-class boutiques, restaurants, and proximity to Grosvenor Square, this home represents the perfect balance between traditional Mayfair elegance and modern living.

FEATURES

- Three Double Bedrooms
- Three Bathrooms
- Fourth Floor with Lift
- Furnished
- Separate Kitchen
- Excellent Location

Price: £1,900 Per week

We aim to make our particulars both accurate and reliable. However they are not guaranteed; nor do they form part of an offer or contract. If you require clarification on any points then please contact us, especially if you're traveling some distance to view. Please note that appliances and heating systems have not been tested and therefore no warranties can be given as to their working order. Energy Rating: D



WETHERELL
MAYFAIR'S FINEST PROPERTIES

102 Mount Street • London • W1K 2TH
T: 020 7529 5588 E: rentals@wetherell.co.uk

wetherell.co.uk

NO ONE KNOWS MAYFAIR BETTER THAN WETHERELL