

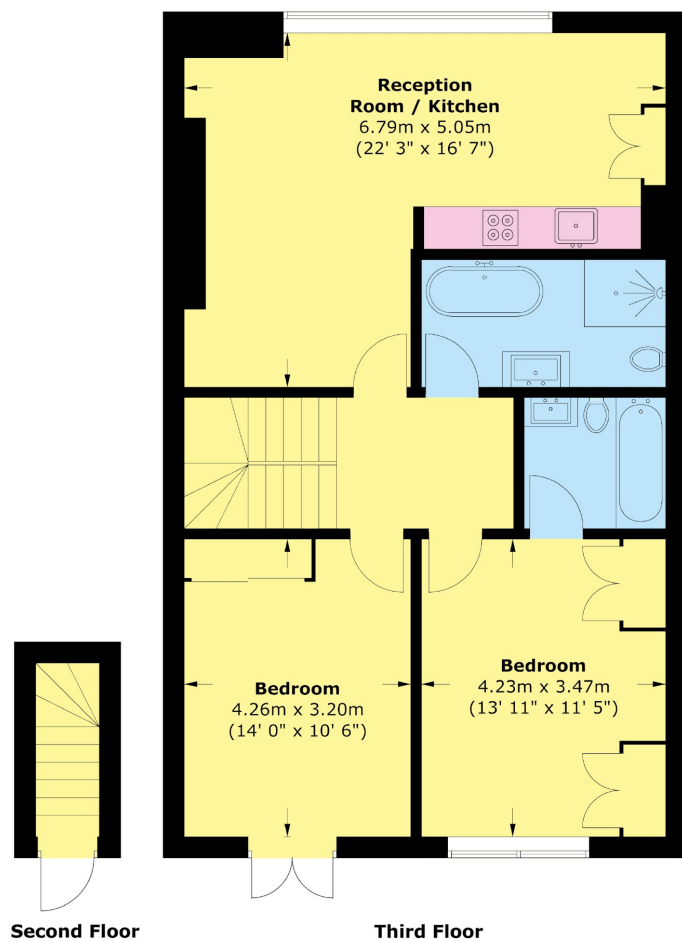


# Mount Street

## Mayfair W1K



Located in the heart of Mayfair, this contemporary two bedroom apartment combines sleek modern design with exceptional convenience.



Total area (approx.) : 73.9 sq. m (795 sq. ft)



The semi open-plan living and dining area is bathed in natural light, featuring high-quality finishes and stylish fixtures throughout. The fully equipped kitchen is ideal for both everyday living and entertaining.

Two well proportioned bedrooms offer comfort and tranquility, complemented by elegant bathrooms with modern fittings.

Situated on Mount Street, residents enjoy proximity to boutique shops, renowned restaurants and excellent transport links.

#### FEATURES

- Two Double Bedrooms
- Two Bathrooms
- Modern
- Furnished
- Wooden Floors Throughout
- Excellent Location

Price: £1,846 Per week



**WETHERELL**  
MAYFAIR'S FINEST PROPERTIES

102 Mount Street • London • W1K 2TH  
T: 020 7529 5588 E: rentals@wetherell.co.uk

wetherell.co.uk

We aim to make our particulars both accurate and reliable. However they are not guaranteed; nor do they form part of an offer or contract. If you require clarification on any points then please contact us, especially if you're traveling some distance to view. Please note that appliances and heating systems have not been tested and therefore no warranties can be given as to their working order. Energy Rating: D

NO ONE KNOWS MAYFAIR BETTER THAN WETHERELL