



**WETHERELL**  
MAYFAIR'S FINEST PROPERTIES



## CORK STREET, W1S

### £3,500 PER WEEK

Located in the heart of Mayfair and situated on the second floor of this new portered building, the apartment offers high specification living, three double bedrooms and three luxury bathrooms.

With wooden flooring throughout, this spacious apartment has an open plan kitchen and elegant reception room with dining area and separate utility room.

The property further consists of a main bedroom with en suite bathroom and dressing area, two additional double bedrooms, one with en suite shower room and family bathroom.

The spa and state-of-the-art gymnasium offers a 24-hr, air-conditioned fitness facility along with sauna and treatment room. In addition to the concierge service there is secure underground parking available for all residents.

BURLINGTON GATE IS SITUATED BETWEEN SAVILLE ROW AND OLD BOND STREET IN THE HEART OF MAYFAIR'S ART GALLERY DISTRICT.

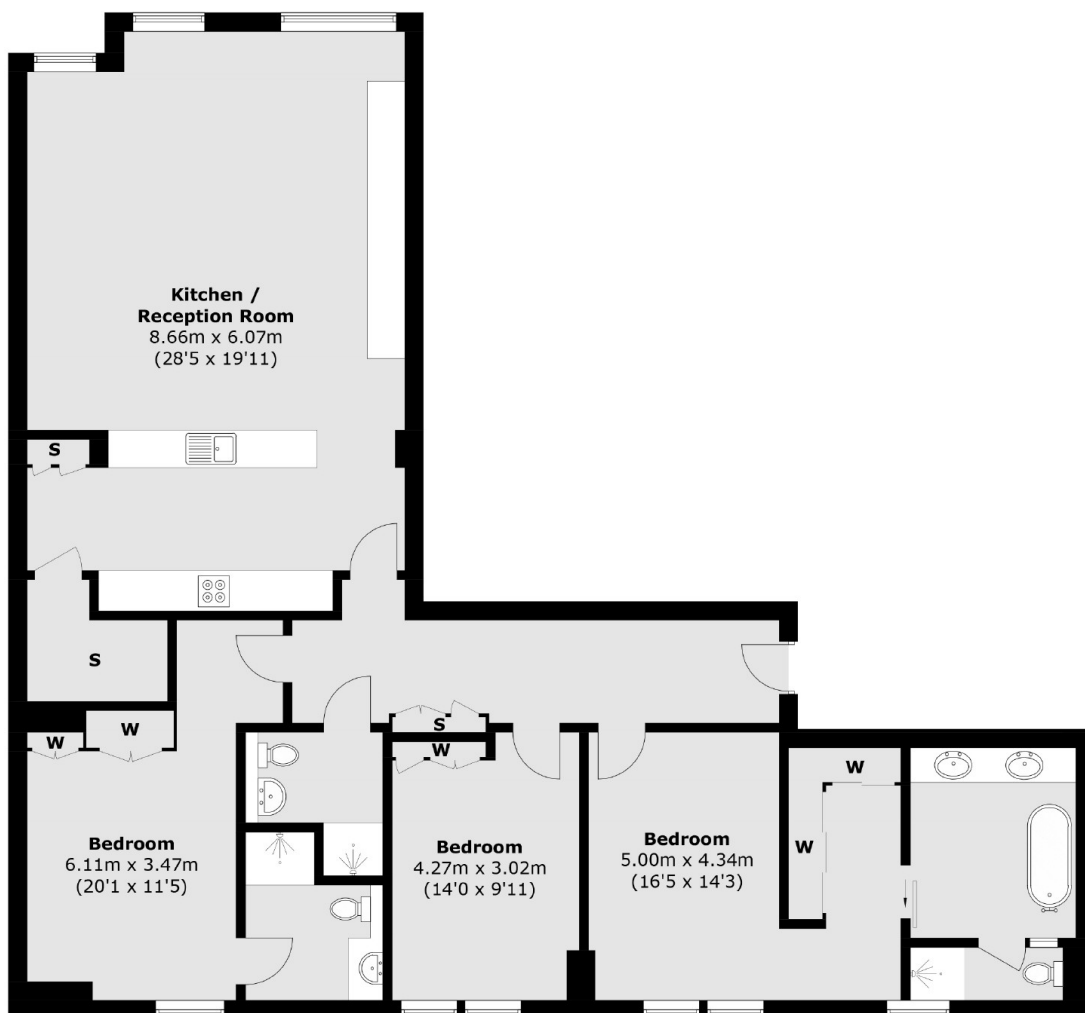


## FEATURES

- Three Double Bedrooms • Three Bathrooms • Secure Private Parking • 24-Hour Concierge • State-Of-The-Art Gymnasium • Immaculately Furnished • Lift •



# CORK STREET, LONDON, W1S



Total area (approx.): 149.0 sq. m (1603.8 sq. ft)