



WETHERELL

MAYFAIR'S FINEST PROPERTIES



MOUNT STREET, W1K

£1,995,000

A large two bedroom apartment with a private garden located on Mayfair's finest street.

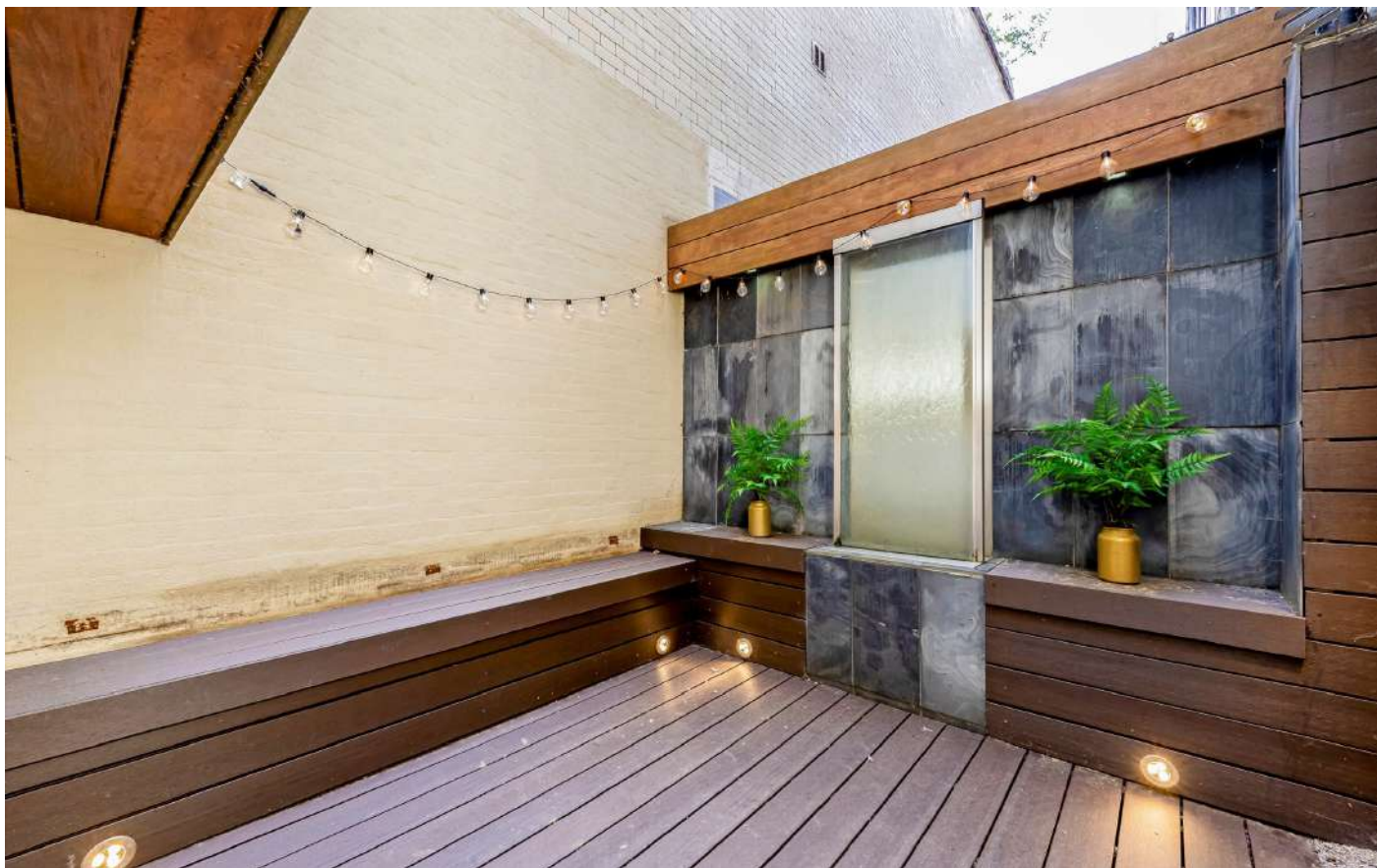
Enviably situated within a stretch of Grade II Listed buildings in one of Mayfair's premier locations, this well presented lateral apartment of 964 sq ft has a spacious open-plan kitchen and reception room with a skylight.

Enviably situated within a stretch of Grade II Listed buildings in one of Mayfair's premier locations, this well presented lateral apartment of 964 sq ft has a spacious open-plan kitchen and reception room with a skylight.

The principal bedroom has built-in wardrobes, a dressing area, en suite shower room and double doors leading directly onto the private decked garden at the rear. The second double bedroom also benefits from a built-in wardrobe and access to the garden. There is also a separate shower room and utility room.

TENURE - Leasehold, approximately 100 years remaining

THIS APARTMENT IS LOCATED BESIDE SOME OF MAYFAIR'S FINEST BOUTIQUE SHOPS, RESTAURANTS AND PRIVATE MEMBERS' BARS WITH MOUNT STREET GARDENS, GROSVENOR SQUARE AND BERKELEY SQUARE OFFERING PERFECT GREEN URBAN ESCAPES

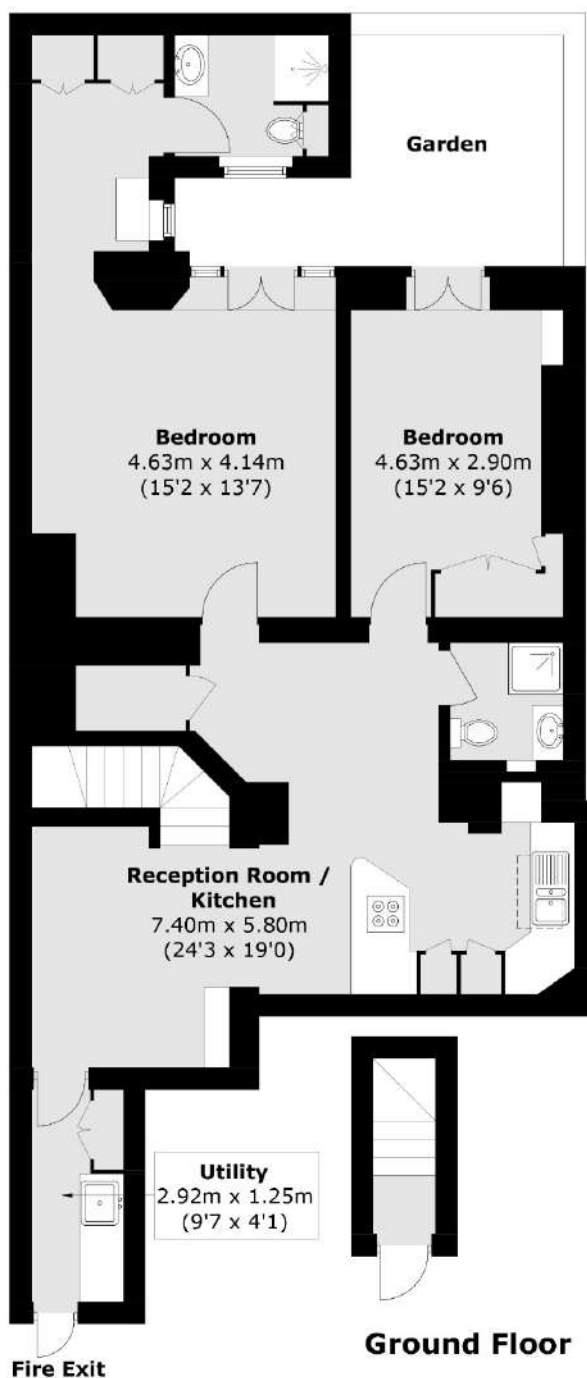


FEATURES

- Prime Mayfair Location • Two Bedrooms • Two Shower Rooms • Private Decked Garden • Open-Plan Kitchen And Reception Room • Long Lease •



MOUNT STREET, LONDON, W1K



Lower Ground Floor

Total area (approx.): 89.6 sq. m (964.4 sq. ft)



WETHERELL
MAYFAIR'S FINEST PROPERTIES

102 Mount Street,
London, W1K 2TH
T: 020 7529 5566
E: sales@wetherell.co.uk

We aim to make our particulars both accurate and reliable. However they are not guaranteed; nor do they form part of an offer or contract. If you require clarification on any points then please contact us, especially if you're traveling some distance to view. Please note that appliances and heating systems have not been tested and therefore no warranties can be given as to their working order.

wetherell.co.uk