



WETHERELL

MAYFAIR'S FINEST PROPERTIES



SHEPHERD STREET, W1J

£950 PER WEEK

A stylish two bedroom apartment located on sought-after Shepherd Street in the heart of Mayfair. The property offers a spacious reception room, separate kitchen, two bedrooms and a modern bathroom.

An exceptional opportunity to enjoy a stylish two bedroom apartment in one of London's most prestigious addresses, with the added benefit of a shared roof terrace.

SHEPHERD STREET IS IDEALLY LOCATED IN THE HEART OF MAYFAIR, JUST OFF CURZON STREET AND MOMENTS AWAY FROM PARK LANE. GREEN PARK UNDERGROUND STATION WILL PROVIDE DIRECT ACCESS TO THE PICCADILLY, VICTORIA AND JUBILEE LINES.

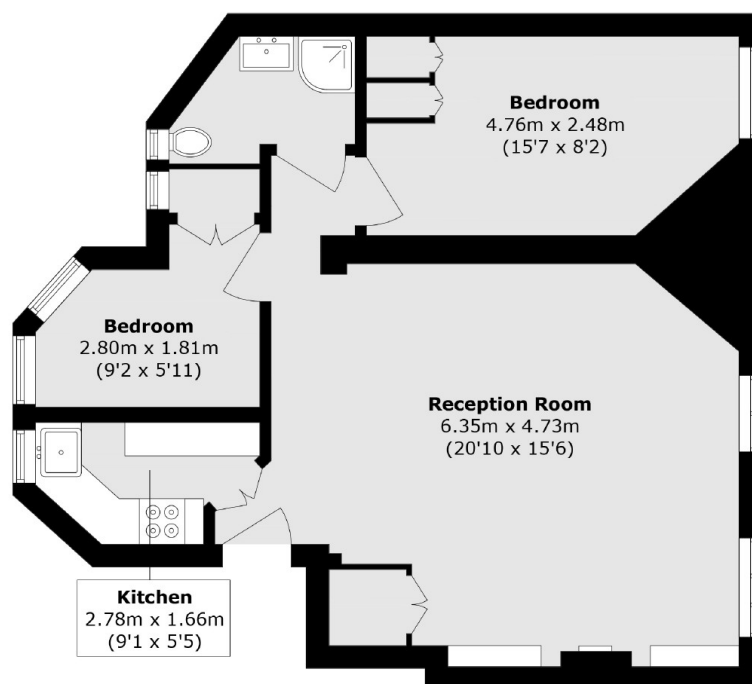


FEATURES

- Two Bedrooms • Separate Kitchen • Furnished/Unfurnished • Spacious Reception Room • Modern Bathroom • Excellent Location •



SHEPHERD STREET, LONDON, W1J



Total area (approx.): 63.2 sq. m (680.2 sq. ft)



WETHERELL
MAYFAIR'S FINEST PROPERTIES

102 Mount Street,
London, W1K 2TH
T: 020 7529 5566
E: sales@wetherell.co.uk

We aim to make our particulars both accurate and reliable. However they are not guaranteed; nor do they form part of an offer or contract. If you require clarification on any points then please contact us, especially if you're traveling some distance to view. Please note that appliances and heating systems have not been tested and therefore no warranties can be given as to their working order.

wetherell.co.uk