



WETHERELL
MAYFAIR'S FINEST PROPERTIES



ROSE & CROWN YARD, SW1Y

£750 PER WEEK

A bright one-bedroom apartment available to rent in St James's. This furnished lateral apartment comprises one principal bedroom, separate bathroom, reception room and fitted kitchen.

This property also benefits from lift access as well as a basement storage area providing ample amounts of extra storage.

ROSE AND CROWN YARD IS A QUIET MEWS PERFECTLY LOCATED MOMENTS FROM ST JAMES'S SQUARE, ST JAMES'S PARK, GREEN PARK AND THE SEEMINGLY ENDLESS BOUTIQUES, SHOPS, RESTAURANTS AND BARS OF ST. JAMES'S AND MAYFAIR.

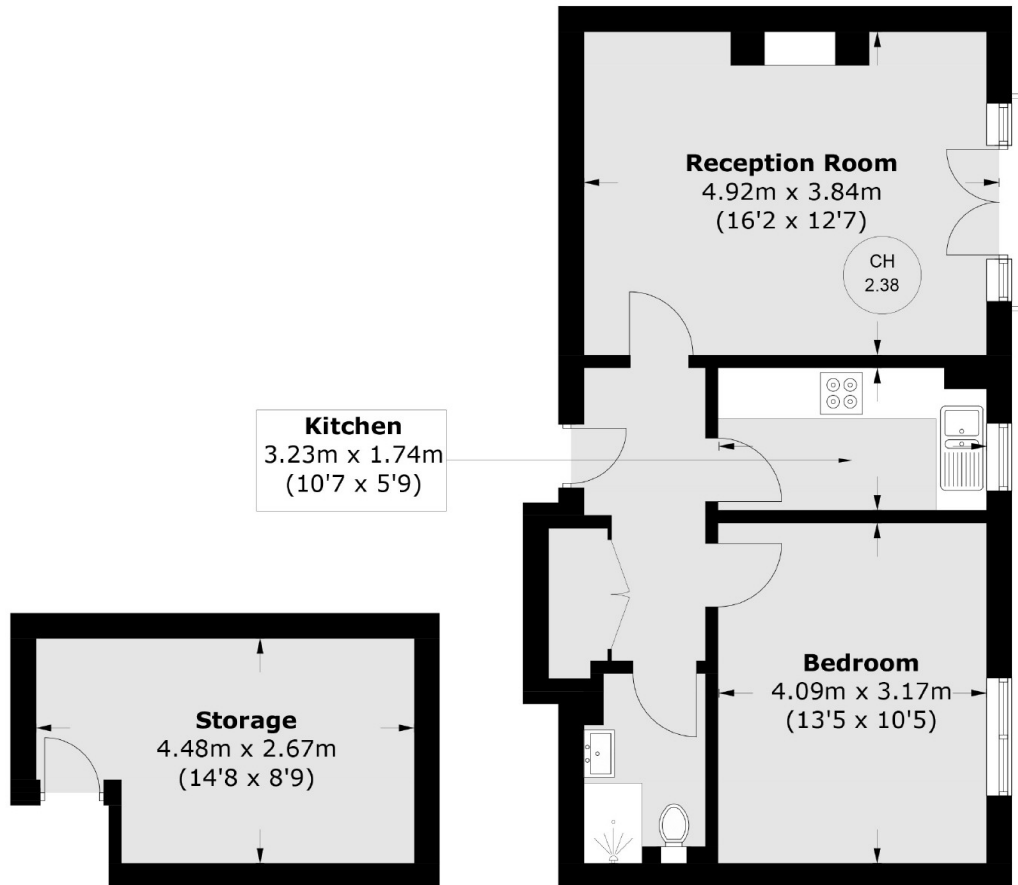


FEATURES

- One Bedroom • Separate Kitchen • Prime St. James's Location • Modern Bathroom • Secure Entry Systems • Furnished • Additional Private Storage Room •



ROSE & CROWN YARD, LONDON, SW1Y



Lower Ground Floor

First Floor

Total area (approx.): 59.2 sq. m (637.2 sq. ft)



WETHERELL
MAYFAIR'S FINEST PROPERTIES

102 Mount Street,
London, W1K 2TH
T: 020 7529 5566
E: sales@wetherell.co.uk

We aim to make our particulars both accurate and reliable. However they are not guaranteed; nor do they form part of an offer or contract. If you require clarification on any points then please contact us, especially if you're traveling some distance to view. Please note that appliances and heating systems have not been tested and therefore no warranties can be given as to their working order.

wetherell.co.uk