



**WETHERELL**  
MAYFAIR'S FINEST PROPERTIES



## South Molton Street, W1K

**£3,461 Per week**

A stunning, newly renovated three bedroom, two bathroom property with private roof terrace.

Finished and furnished to the highest of standards throughout, this impressive three bedroom apartment boasts an open plan kitchen reception room with built in appliances, a large principal bedroom with en-suite and dressing room and a further two double bedrooms with bathroom.

The building is located close to Bond Street underground station (Central and Jubilee lines) and the new cross rail scheme.



## FEATURES

- Three Double Bedrooms • High Specification • Private Roof Terrace • High Quality Furnishings • Two Luxurious Bathrooms • Excellent Location •

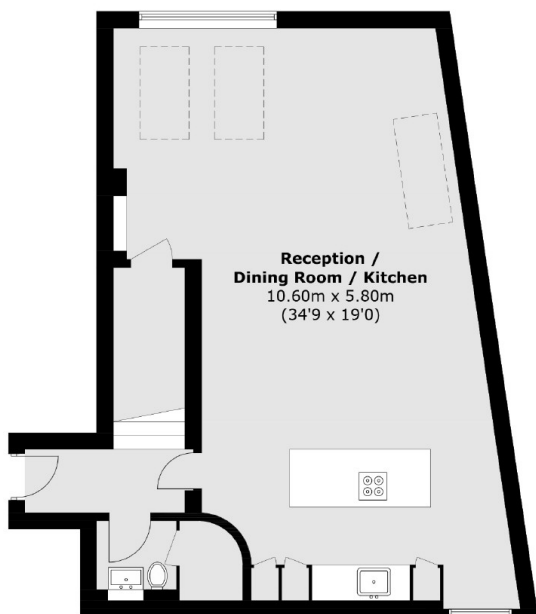




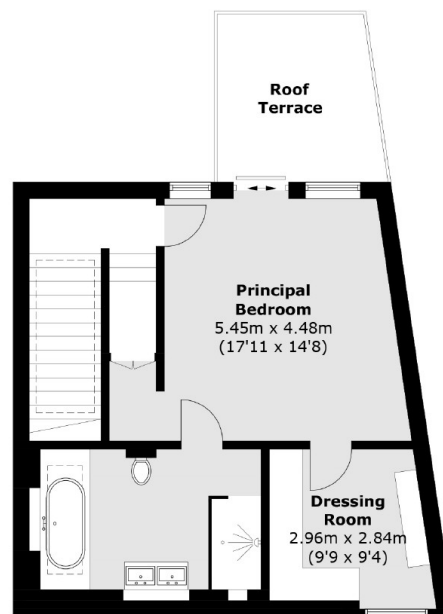
South Molton Street,  
London, W1K



**Third Floor**



**First Floor**



**Second Floor**

Area (approx.): 161.3 sq. m (1,736.2 sq. ft)  
Roof Terraces : 16.1 sq. m (173.3 sq. ft)