



**WETHERELL**  
MAYFAIR'S FINEST PROPERTIES



## NEW BURLINGTON PLACE, W1S

£2,500,000

An immaculately presented mews style house in a discreet Mayfair location

Situated moments from Savile Row, this house is set over three floors and measures 1,123 sq ft of internal space. Accessed through a coded entrance, this modern home offers Prime Mayfair living with secure access and 'lock up and leave' capability.

On the ground floor there is a smart open plan kitchen/reception room with feature media wall, bay window and kitchen with fully integrated Siemens appliances. There is also a guest WC and additional storage.

The first floor comprises the principal bedroom suite with dressing area, built in wardrobes and an impressive en suite shower room.

There are two further bedrooms on the second floor, both with their own built in storage and a separate bathroom with dual sink.

SITUATED ON NEW BURLINGTON PLACE, JUST OFF SAVILE ROW, THIS HOUSE IS MOMENTS FROM ALL THE BOUTIQUE SHOPS OF BOND STREET AND THE FURTHER AMENITIES MAYFAIR HAS TO OFFER INCLUDING MICHELIN STAR RESTAURANTS.



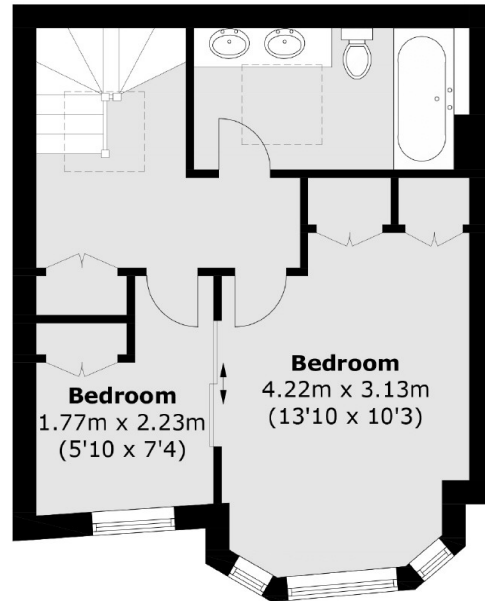
## FEATURES

- Mews Style House • Discreet Mayfair Location • Three Bedrooms • Two Bathrooms • Long Lease • Secure Entrance •

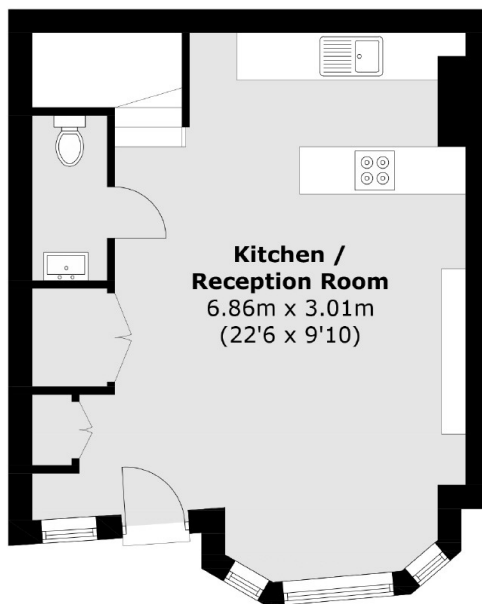




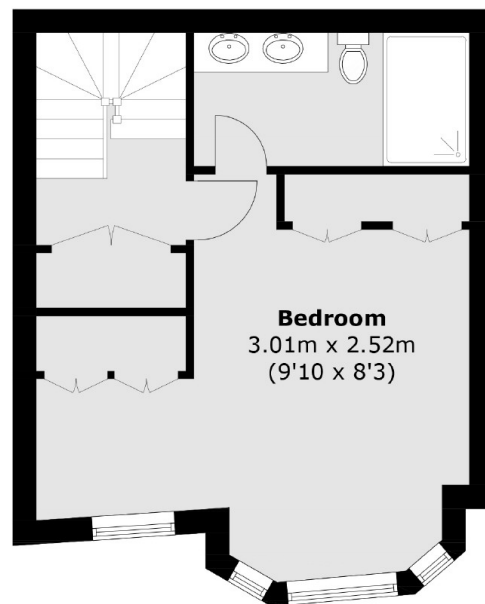
# NEW BURLINGTON PLACE, LONDON, W1S



**Second Floor**



**Ground Floor**



**First Floor**

Total area (approx.): 104.4 sq. m (1,123.8 sq. ft)



**WETHERELL**  
MAYFAIR'S FINEST PROPERTIES

102 Mount Street,  
London, W1K 2TH  
T: 020 7529 5566  
E: [sales@wetherell.co.uk](mailto:sales@wetherell.co.uk)

We aim to make our particulars both accurate and reliable. However they are not guaranteed; nor do they form part of an offer or contract. If you require clarification on any points then please contact us, especially if you're traveling some distance to view. Please note that appliances and heating systems have not been tested and therefore no warranties can be given as to their working order.

[wetherell.co.uk](http://wetherell.co.uk)