



WETHERELL
MAYFAIR'S FINEST PROPERTIES



JERMYN STREET, SW1Y

£1,250,000

An elegant one bedroom apartment with views towards Piccadilly Circus.

This lateral apartment of 574 sq ft is situated on the third floor of a smart Grade II listed building with lift access, porter and well presented communal areas.

The large reception room has an open plan kitchen with integrated appliances, high ceilings with ornate detailing and large sash windows allowing an abundance of natural light. The double bedroom has built in wardrobes and shares the impressive views over Piccadilly. There is a separate shower room.

THE BUILDING IS LOCATED IN THE CENTRE OF LONDON'S OLDEST DISTRICT AND IS CLOSE TO THE MANY AMENITIES OF ST. JAMES'S, MAYFAIR, PICCADILLY AND SOHO.



FEATURES

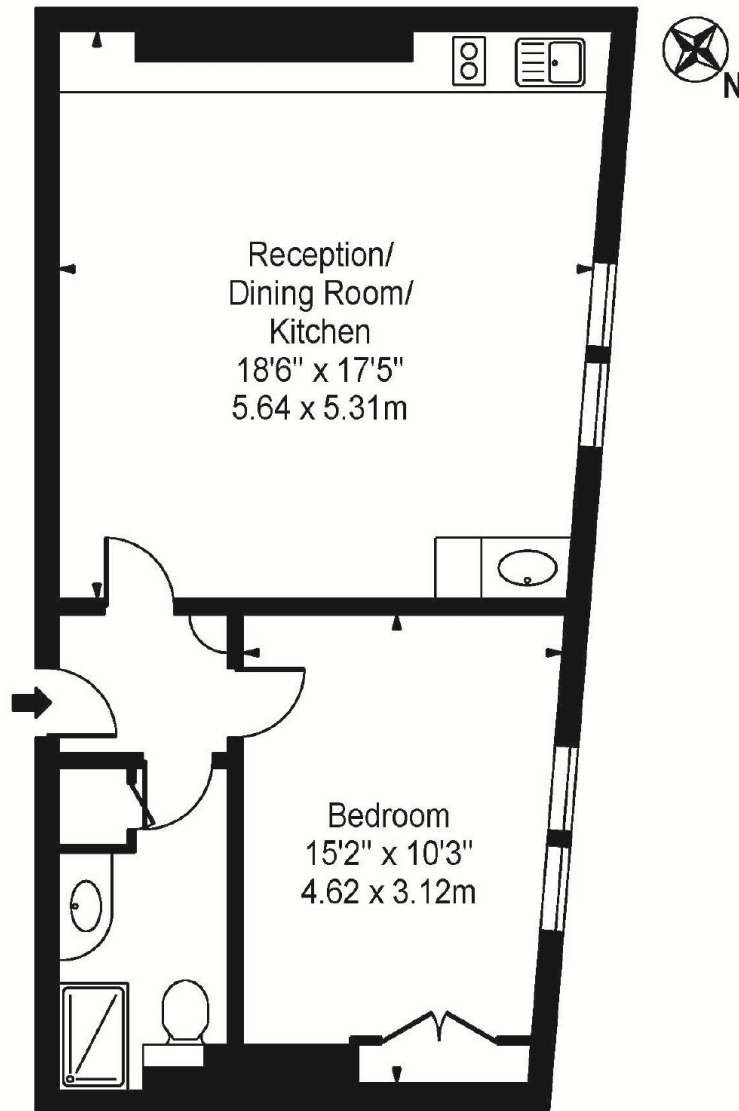
- Spacious Double Bedroom • One Bathroom • Third Floor • Porter • Lift Access • Excellent Location •



JERMYN STREET,
LONDON, SW1Y

Jermyn Street

Approx. Gross Internal Area 574 Sq Ft - 53.33 Sq M



Third Floor

For Illustration Purposes Only - Not To Scale

This floor plan should be used as a general outline for guidance only and does not constitute in whole or in part an offer or contract. Any intending purchaser or lessee should satisfy themselves by inspection, searches, enquiries and full survey as to the correctness of each statement. Any areas, measurements or distances quoted are approximate and should not be used to value a property or be the basis of any sale or let.



WETHERELL
MAYFAIR'S FINEST PROPERTIES

102 Mount Street,
London, W1K 2TH
T: 020 7529 5566
E: sales@wetherell.co.uk

We aim to make our particulars both accurate and reliable. However they are not guaranteed; nor do they form part of an offer or contract. If you require clarification on any points then please contact us, especially if you're traveling some distance to view. Please note that appliances and heating systems have not been tested and therefore no warranties can be given as to their working order.

wetherell.co.uk