



WETHERELL
MAYFAIR'S FINEST PROPERTIES



REEVES MEWS, W1K

£1,550 PER WEEK

A recently refurbished fourth floor two bedroom apartment with two private balconies in this well maintained building with resident caretaker in the heart of Mayfair.

REEVES MEWS IS LOCATED BETWEEN PARK STREET AND SOUTH AUDLEY STREET CLOSE TO THE GROSVENOR HOUSE HOTEL AND THE OPEN SPACES OF HYDE PARK.

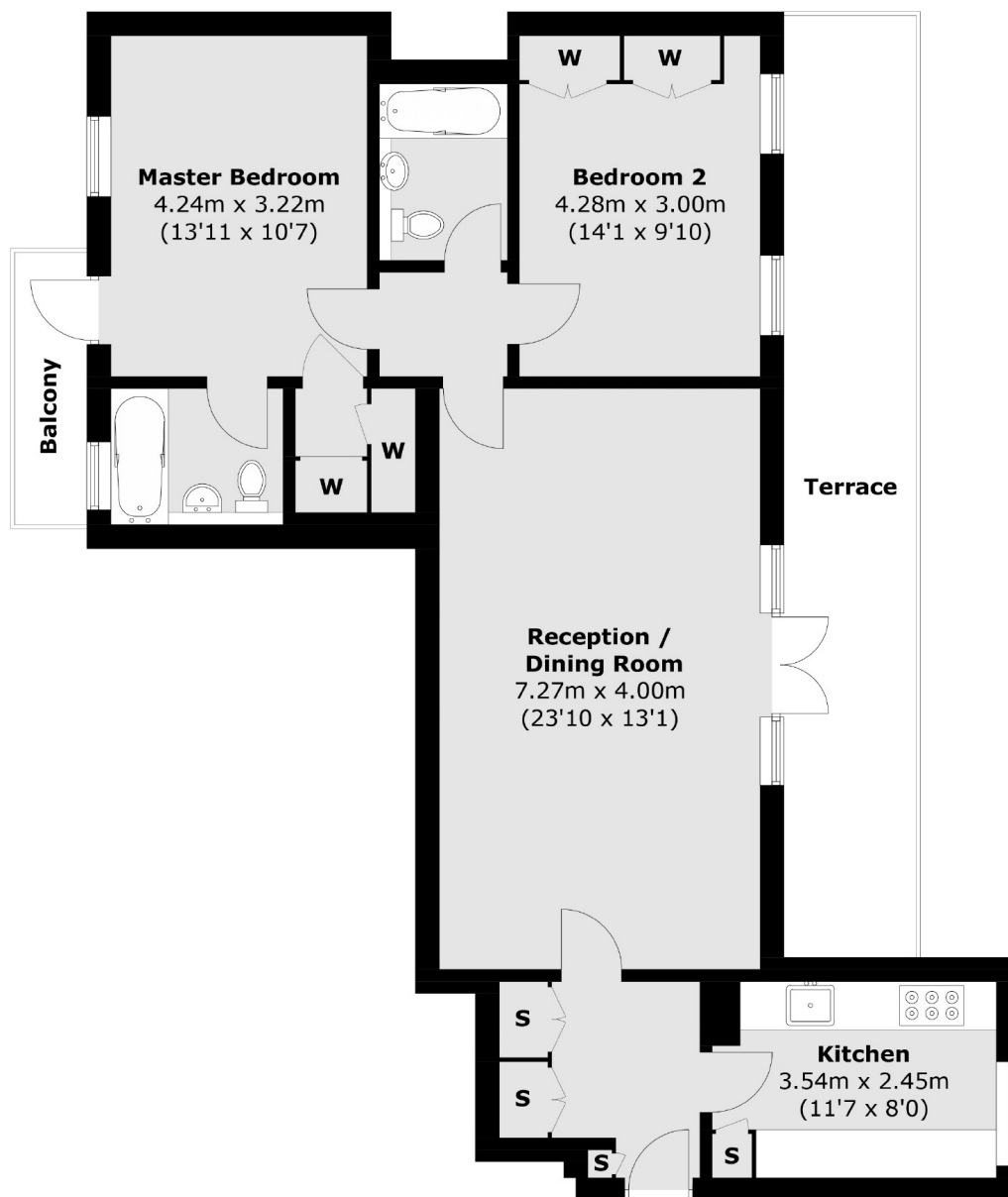


FEATURES

- Two Double Bedrooms • Spacious Reception Room • Two Balconies • Resident Caretaker • Lift • Fourth Floor •



REEVES MEWS, LONDON, W1K



WETHERELL
MAYFAIR'S FINEST PROPERTIES

102 Mount Street,
London, W1K 2TH
T: 020 7529 5566
E: sales@wetherell.co.uk

We aim to make our particulars both accurate and reliable. However they are not guaranteed; nor do they form part of an offer or contract. If you require clarification on any points then please contact us, especially if you're traveling some distance to view. Please note that appliances and heating systems have not been tested and therefore no warranties can be given as to their working order.

wetherell.co.uk