

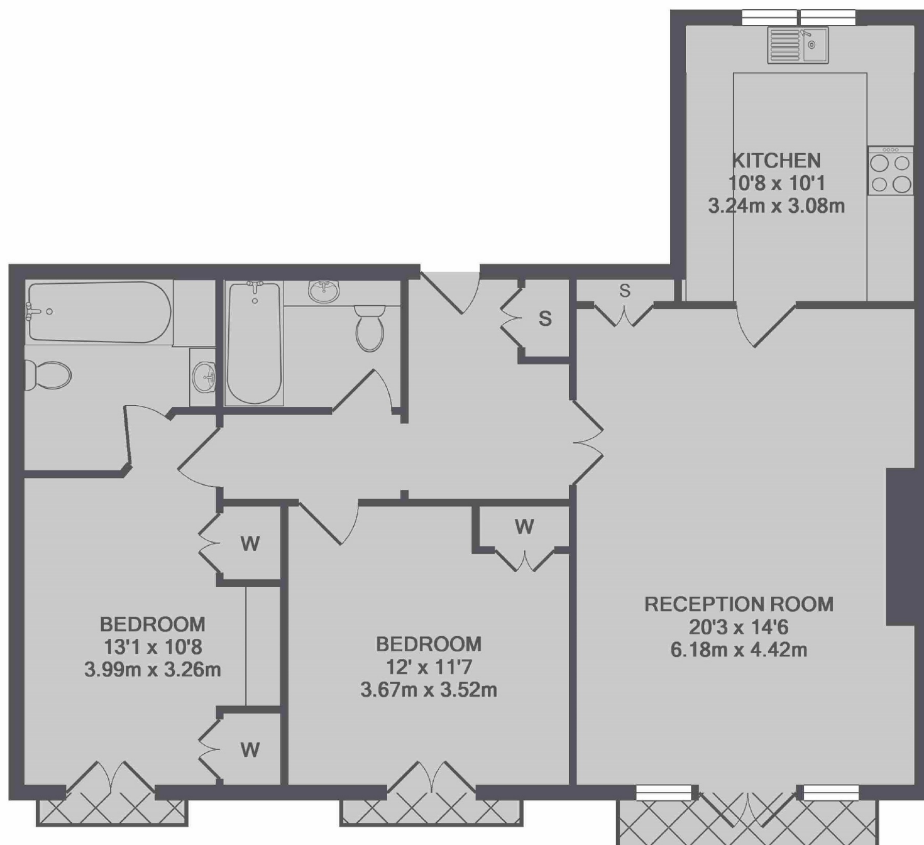


Blackburnes Mews

Mayfair W1K



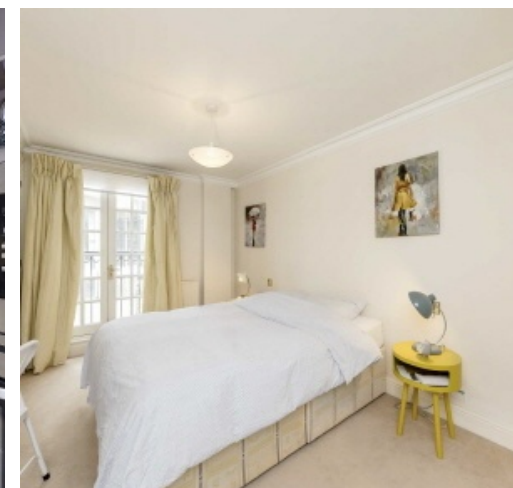
A two double bedroom apartment on the first floor of a secure gated mews development to the West of Grosvenor Square.



TOTAL APPROX. FLOOR AREA 920 SQ.FT. (85.5 SQ.M.)



The property boasts a large living room with french windows and separate fully fitted kitchen. Secure underground parking is available at an additional cost under separate negotiation.



Located close to Bond Street and Marble Arch underground stations, Oxford Street and the world class shops and restaurants of Mayfair.

FEATURES

- Two Double Bedrooms
- Two Bathrooms
- First Floor
- French Windows
- Lift Access
- Excellent Location

Price: £850 Per week

We aim to make our particulars both accurate and reliable. However they are not guaranteed; nor do they form part of an offer or contract. If you require clarification on any points then please contact us, especially if you're traveling some distance to view. Please note that appliances and heating systems have not been tested and therefore no warranties can be given as to their working order. **Energy Rating: B**



WETHERELL
MAYFAIR'S FINEST PROPERTIES

102 Mount Street • London • W1K 2TH

T: 020 7529 5588

E: rentals@wetherell.co.uk

wetherell.co.uk

NO ONE KNOWS MAYFAIR BETTER THAN WETHERELL